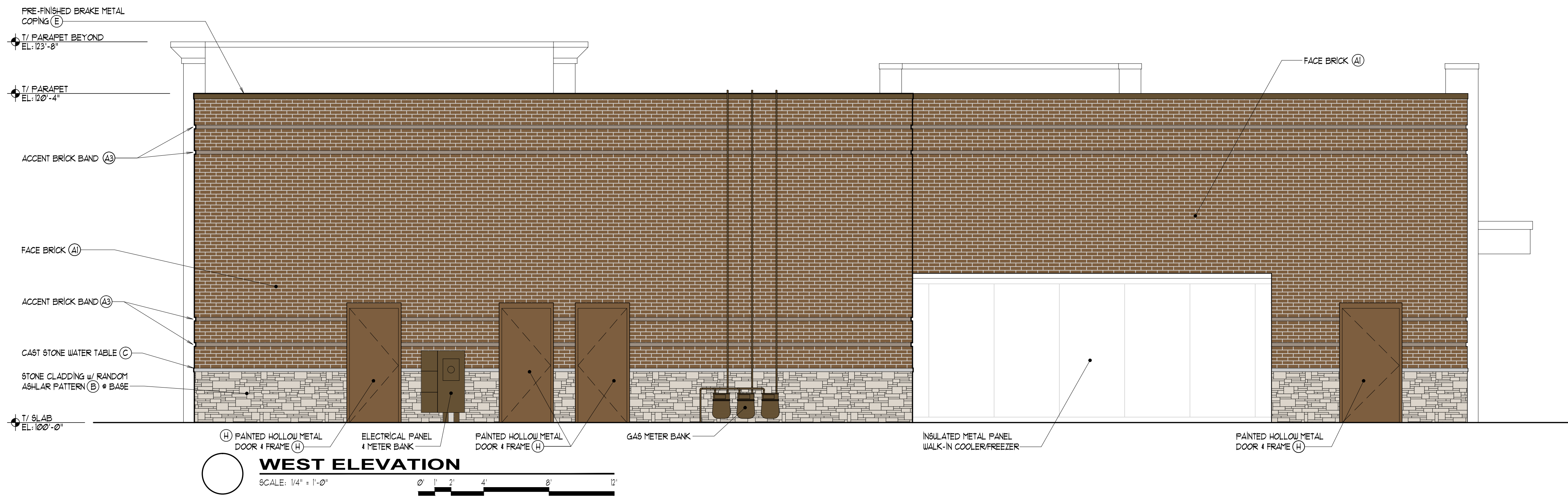
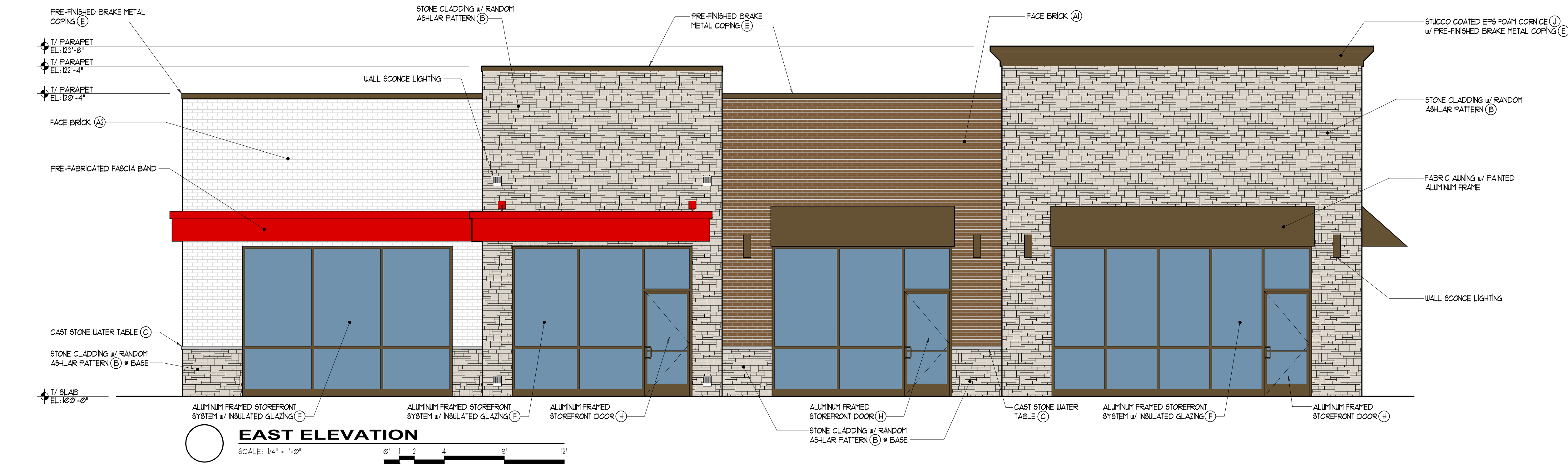
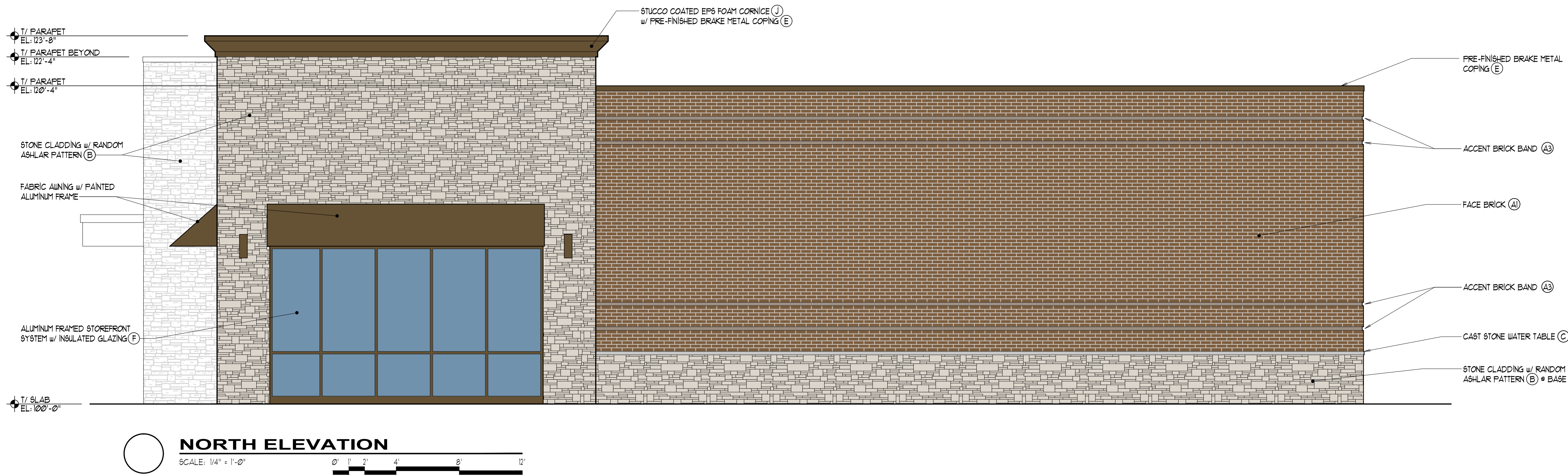
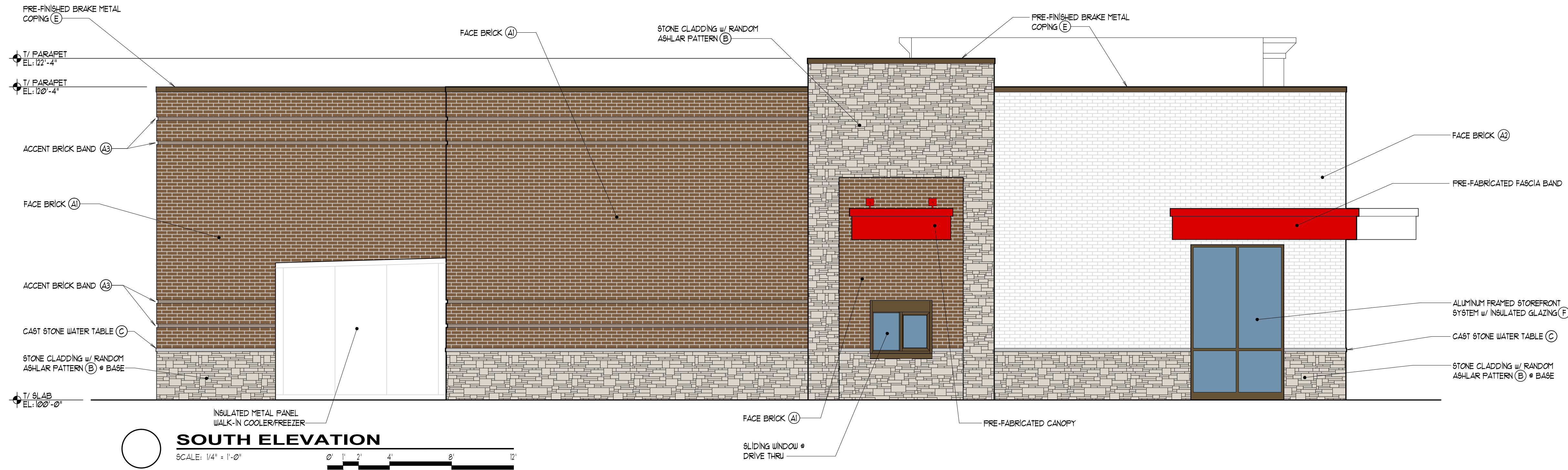


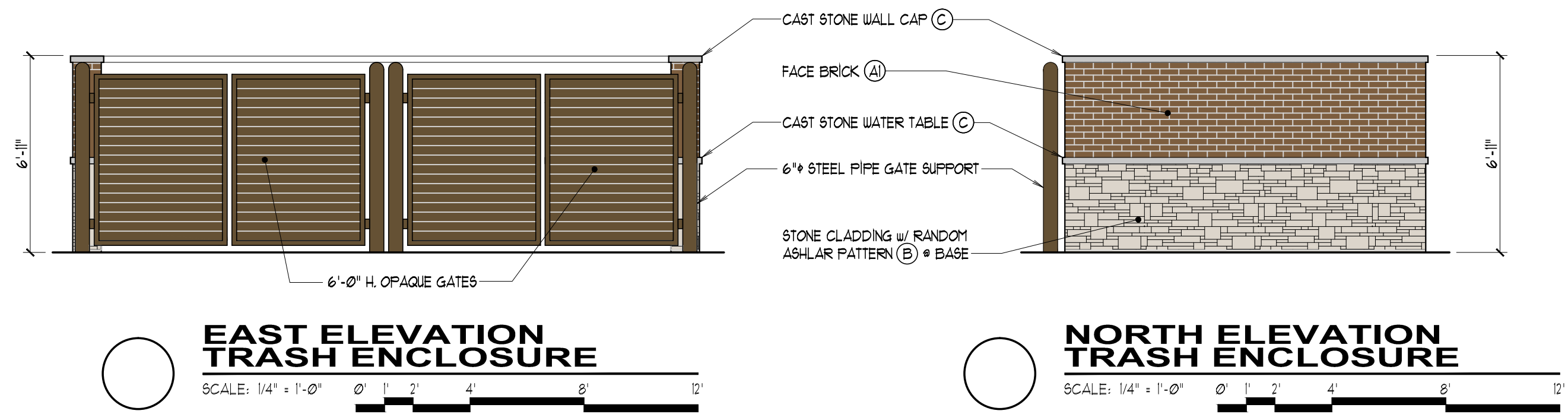
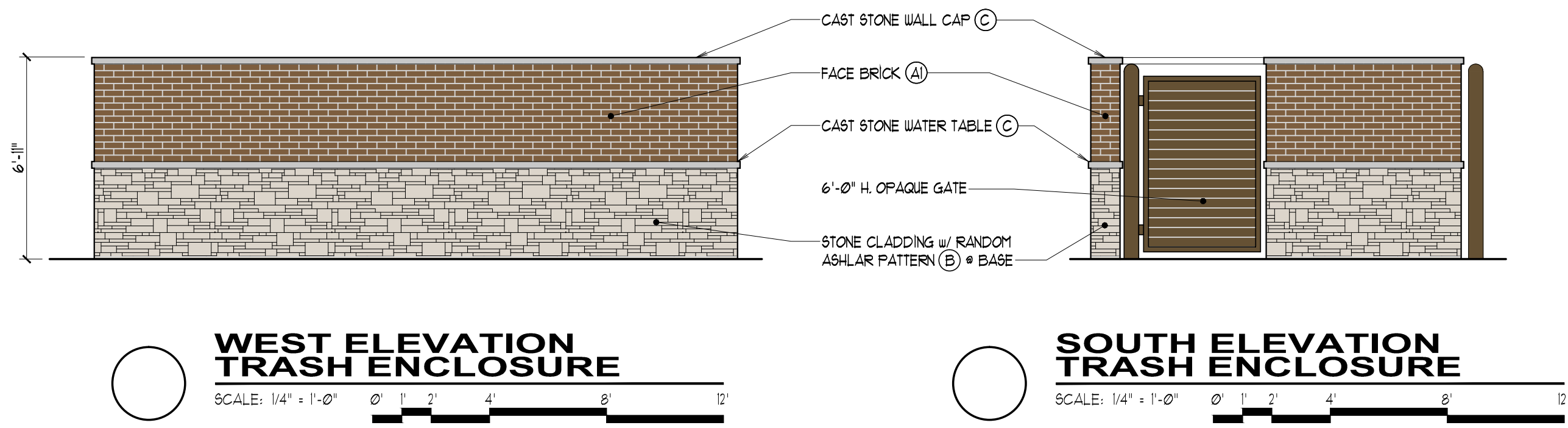
EXTERIOR MATERIAL LEGEND										
SYMBOL	(A)	(A2)	(A3)	(B)	(C)	(E)	(F)	(G)	(H)	(J)
MATERIAL	FACE BRICK VENEER, MODULAR SIZE	FACE BRICK VENEER, MODULAR SIZE	FACE BRICK VENEER, MODULAR SIZE	STONE VENEER, RANDOM ASHLAR PATTERN	CAST STONE SILL/CAP	PRE-FINISHED BRAKE METAL COPING	ALUMINUM FRAMED STOREFRONT SYSTEM w/ 1" INSULATED GLAZING	ALUMINUM FRAMED STOREFRONT ENTRY DOOR SYSTEM w/ 1" INSULATED GLAZING	INSULATED AND GALVANIZED HOLLOW METAL DOOR AND FRAMES, FOR PAINT	STUCCO COATED EPS FOAM CORNICE
MANUFACTURER	SUMMIT BRICK CO.	SUMMIT BRICK CO.	SUMMIT BRICK CO.	FON DU LAC STONE	ARCHITECTURAL CAST STONE	FIRESTONE BUILDING PRODUCTS	KAINEER "TRIFAB VERSAGLAZE 4511", LINETEC 4 VITRO ARCHITECTURAL GLASS	KAINEER "350" MEDIUM STILE, LINETEC 4 VITRO ARCHITECTURAL GLASS	SHERWIN-WILLIAMS	STO CORP.
COLOR	"LB423 "ADAMELLO GRAIN"	"256 "ALASKAN"	"LB625 "DARK GRAY GRAIN"	"HARVEST FON DU LAC"	MIX #514	"MEDIUM BRONZE"	STOREFRONT: MEDIUM BRONZE ANODIZED GLAZING; SOLARBAN 60 (CLEAR + CLEAR)	STOREFRONT: MEDIUM BRONZE ANODIZED GLAZING; SOLARBAN 60 (CLEAR + CLEAR)	"6082 "COBBLE BROWN"	COLOR: SHERWIN WILLIAMS #1055 "ENDURING BRONZE" FINISH: "MILANO"
CONTACT	BRICKS INCORPORATED BRENT SCHMITT PH: 630-130-5556	BRICKS INCORPORATED BRENT SCHMITT PH: 630-130-5556	BRICKS INCORPORATED BRENT SCHMITT PH: 630-130-5556	BRICKS INCORPORATED BRENT SCHMITT PH: 630-130-5556	MARYAM YUSUF PH: 630-371-4800 x354	---	---	---	---	---

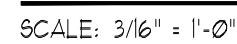


EXTERIOR MATERIAL LEGEND										
SYMBOL	(A)	(A2)	(A3)	(B)	(C)	(E)	(F)	(G)	(H)	(J)
MATERIAL	FACE BRICK VENEER MODULAR SIZE	FACE BRICK VENEER MODULAR SIZE	FACE BRICK VENEER MODULAR SIZE	STONE VENEER RANDOM ASHLAR PATTERN	CAST STONE SILL/CAP	PRE-FINISHED BRAKE METAL COPING	ALUMINUM FRAMED STOREFRONT SYSTEM w/ 1" INSULATED GLAZING	ALUMINUM FRAMED STOREFRONT ENTRY DOOR SYSTEM w/ 1" INSULATED GLAZING	INSULATED AND GALVANIZED HOLLOW METAL DOOR AND FRAMES FOR PAINT	STUCCO COATED EPS FOAM CORNICE
MANUFACTURER	SUMMIT BRICK CO.	SUMMIT BRICK CO.	SUMMIT BRICK CO.	FON DU LAC STONE	ARCHITECTURAL CAST STONE	FIRESTONE BUILDING PRODUCTS	KAUKEER "TRIFAB VERSAGLAZE 451T", LINETEC & VITRO ARCHITECTURAL GLASS	KAUKEER "350" MEDIUM STILE, LINETEC & VITRO ARCHITECTURAL GLASS	SHERWIN-WILLIAMS	STO CORP.
COLOR	"LB423 "ADAMELLO GRAIN"	"556 "ALASKAN"	"LB625 "DARK GRAY GRAIN"	"HARVEST FON DU LAC"	MIX #514	"MEDIUM BRONZE"	STOREFRONT: MEDIUM BRONZE ANODIZED GLAZING; SOLARBAN 60 (CLEAR + CLEAR)	STOREFRONT: MEDIUM BRONZE ANODIZED GLAZING; SOLARBAN 60 (CLEAR + CLEAR)	"6082 "COBBLE BROWN"	COLOR: SHERWIN WILLIAMS "1055 "ENDURING BRONZE" FINISH: "MILANO"
CONTACT	BRICKS INCORPORATED BRENT SCHMITT PH: 630-130-5156	BRICKS INCORPORATED BRENT SCHMITT PH: 630-130-5156	BRICKS INCORPORATED BRENT SCHMITT PH: 630-130-5156	BRICKS INCORPORATED BRENT SCHMITT PH: 630-130-5156	MARYAM YUSUFI PH: 630-371-4800 x354	---	---	---	---	---

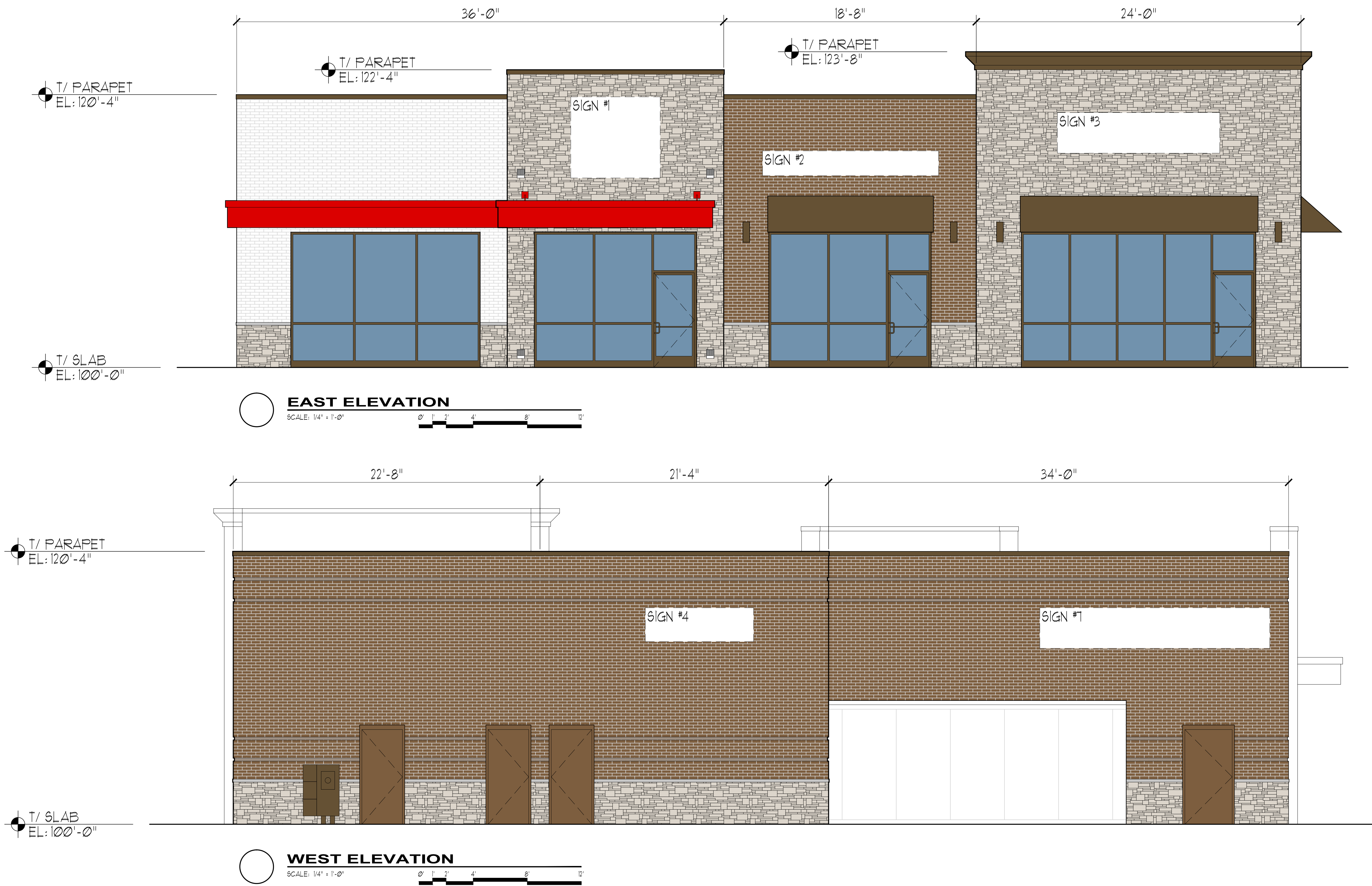


EXTERIOR MATERIAL LEGEND										
SYMBOL	(A)	(A2)	(A3)	(B)	(C)	(E)	(F)	(G)	(H)	(J)
MATERIAL	FACE BRICK VENEER MODULAR SIZE	FACE BRICK VENEER MODULAR SIZE	FACE BRICK VENEER MODULAR SIZE	STONE VENEER RANDOM ASHLAR PATTERN	CAST STONE SILL/CAP	PRE-FINISHED BRAKE METAL COPING	ALUMINUM FRAMED STOREFRONT SYSTEM w/ 1" INSULATED GLAZING	ALUMINUM FRAMED STOREFRONT ENTRY DOOR SYSTEM w/ 1" INSULATED GLAZING	INSULATED AND GALVANIZED HOLLOW METAL DOOR AND FRAMES FOR PAINT	STUCCO COATED EPS FOAM CORNICE
MANUFACTURER	SUMMIT BRICK CO.	SUMMIT BRICK CO.	SUMMIT BRICK CO.	FON DU LAC STONE	ARCHITECTURAL CAST STONE	FIRESTONE BUILDING PRODUCTS	KAIJNEER "TRIFAB VERSAGLAZE 451T", LINETEC & VITRO ARCHITECTURAL GLASS	KAIJNEER "350" MEDIUM STYLE LINETEC & VITRO ARCHITECTURAL GLASS	SHERWIN-WILLIAMS	STO CORP.
COLOR	"LB423 "ADAMELLO GRAIN"	"256 "ALASKAN"	"LB625 "DARK GRAY GRAIN"	"HARVEST FON DU LAC"	MIX "B14	"MEDIUM BRONZE"	STOREFRONT: MEDIUM BRONZE ANODIZED GLAZING: SOLARBAN 60 (CLEAR + CLEAR)	STOREFRONT: MEDIUM BRONZE ANODIZED GLAZING: SOLARBAN 60 (CLEAR + CLEAR)	"6082 "COBBLE BROWN"	COLOR: SHERWIN WILLIAMS "1055 "ENDURING BRONZE" FINISH: "MILANO"
CONTACT	BRICKS INCORPORATED BRENT SCHMITT PH: 630-130-5156	BRICKS INCORPORATED BRENT SCHMITT PH: 630-130-5156	BRICKS INCORPORATED BRENT SCHMITT PH: 630-130-5156	BRICKS INCORPORATED BRENT SCHMITT PH: 630-130-5156	MARYAM YUSUFI PH: 630-371-4800 x354	---	---	---	---	---

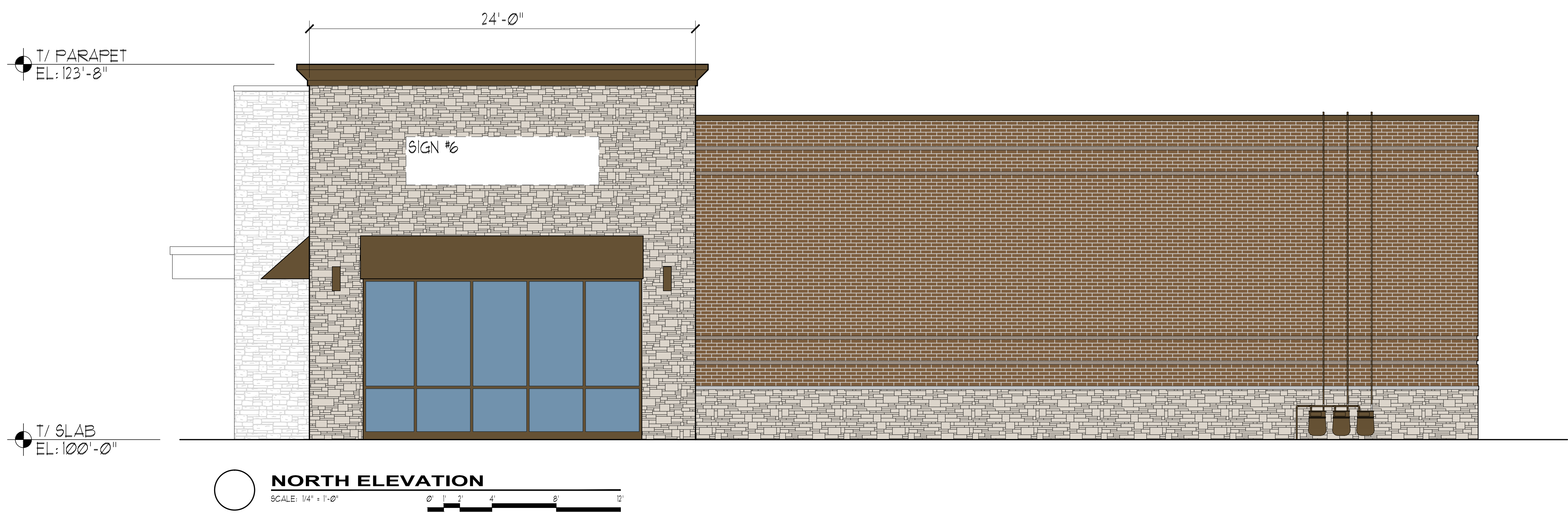
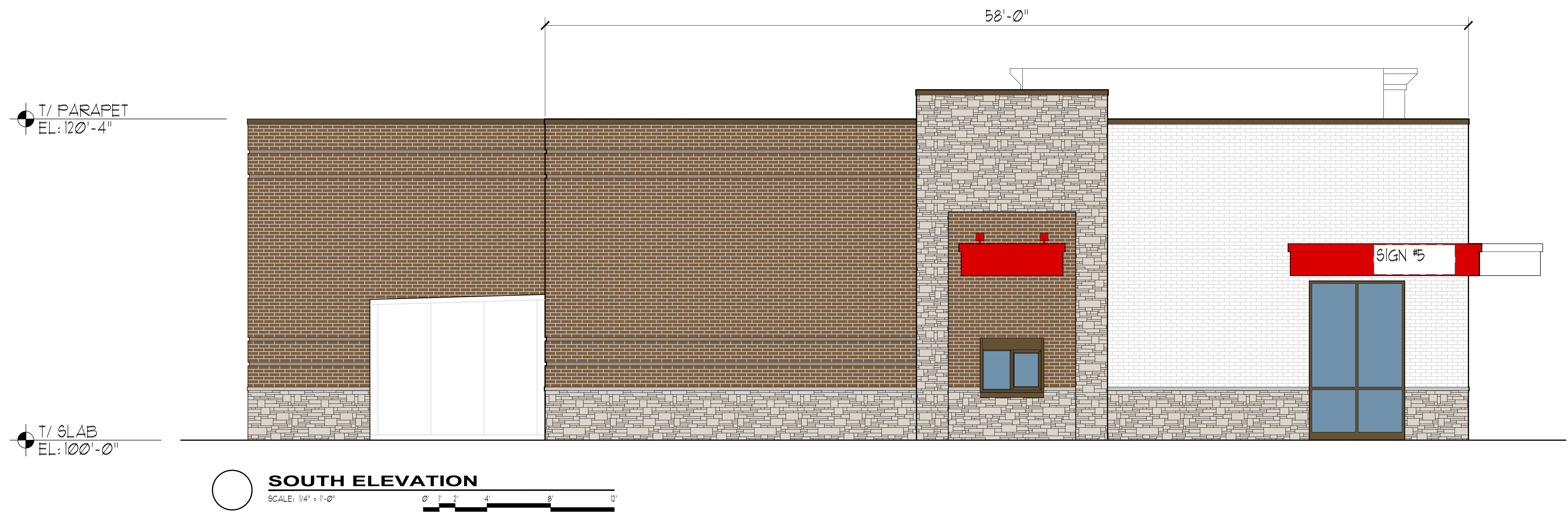




PROPOSED SIGNAGE SCHEDULE				
SIGN NO.	MAX. ALLOWABLE AREA (15 SF. x WALL LENGTH)	PROPOSED SIGN AREA	MAXIMUM SIGN HEIGHT	PROPOSED SIGN HEIGHT
1	54 SF.	40 SF.	36"	72"
2	28 SF.	23.83 SF.	36"	22"
3	36 SF.	36 SF. MAX.	36"	36" MAX.
4	32 SF.	20 SF.	36"	30"
5	87 SF.	9.43 SF.	36"	22.25"
6	36 SF.	36 SF. MAX.	36"	36" MAX.
7	51 SF.	51 SF. MAX.	36"	36" MAX.



PROPOSED SIGNAGE SCHEDULE				
SIGN NO.	MAX. ALLOWABLE AREA (15 SF. x WALL LENGTH)	PROPOSED SIGN AREA	MAXIMUM SIGN HEIGHT	PROPOSED SIGN HEIGHT
1	54 SF.	40 SF.	36"	72"
2	28 SF.	23.83 SF.	36"	22"
3	36 SF.	36 SF. MAX.	36"	36" MAX.
4	32 SF.	20 SF.	36"	30"
5	87 SF.	9.43 SF.	36"	22.25"
6	36 SF.	36 SF. MAX.	36"	36" MAX.
7	51 SF.	51 SF. MAX.	36"	36" MAX.

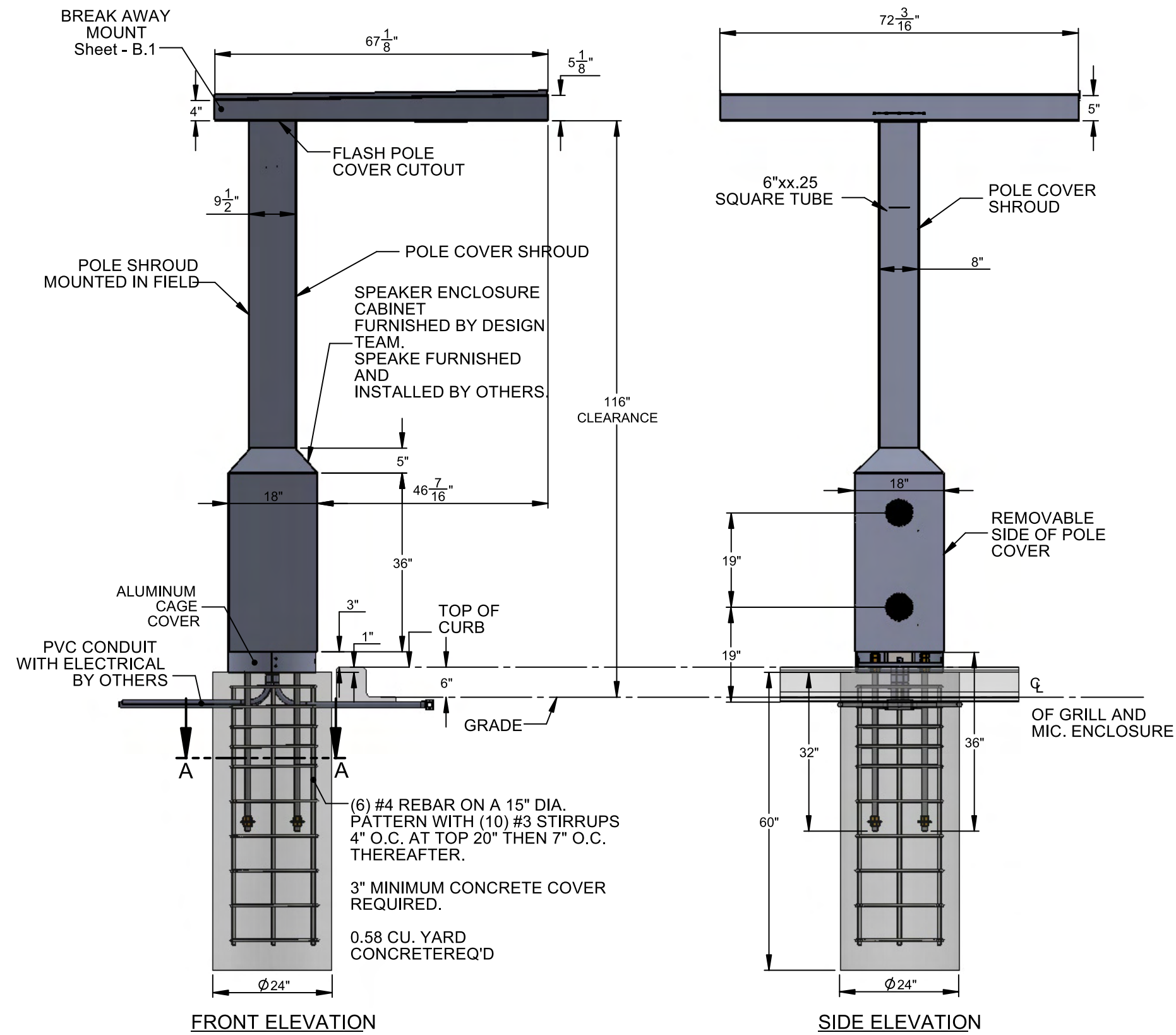


1" Rain Channel
Edge Of Metal Roof
1" Raised Front Slope
To Back



Design Team to provide anchor bolts and to be sent out early to the GC's. GC's responsible to set in concrete 3 days before Design Team is on site to install canopy.

731-925-4448 • 800-953-3744 • Fax 731-926-2022
www.designteam.net



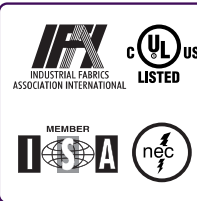
APPROVAL INFORMATION & CONFIRMATION

☐ Proof is approved. Proceed with production of order. ☐ Proof is approved with corrections. Make corrections as indicated and proceed with production of order

SIGNATURE _____ PRINT NAME _____ DATE _____

I have reviewed this proof in regard to: Sign type; order quantity; and accuracy of icons, symbols, and text (e.g. spelling capitalization, punctuation).

These plans are the exclusive property of Design Team Sign Company and are the result of the original work of its employees. They are submitted to your company for the sole purpose of your consideration of whether to purchase these plans or to purchase from Design Team Sign Company a product manufactured according to these plans. Distribution or exhibition of the plans to anyone other than employees of your company, or use of these plans to construct a product similar to one embodied herein, is expressly forbidden. In the event that exhibition or construction occurs, Design Team Sign Company expects to be reimbursed \$500 in compensation for time and effort entailed in creating these plans.



Client: ARBY'S
Location: _____
Drawn By: JRB Date: 8/3/17
Approved By: _____
Sheet: _____ Scale: _____
File: Filesystem/Rest./Arbys/CP

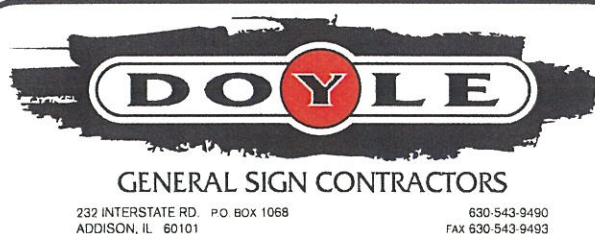
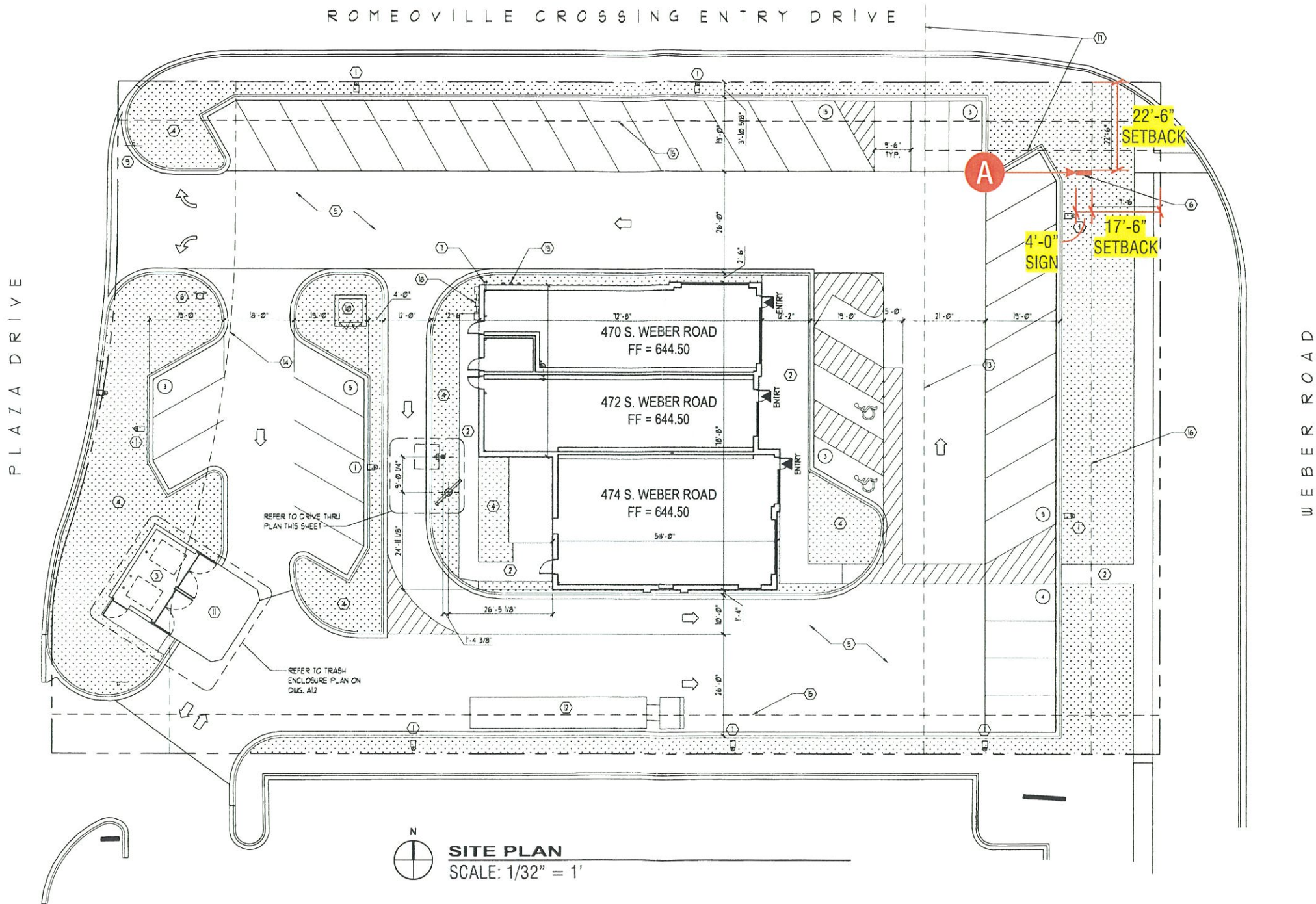


SIGN COMPANY LLC.
731-925-4448 • 800-953-3744 • Fax 731-926-2022
www.designteam.net



- ALUMINUM SIGN CABINET, RETAINERS & DIVIDER BARS PAINTED SATIN WHITE
- FLAT WHITE LEXAN TENANT FACE w/ FIRST SURFACE APPLIED TRANSLUCENT VINYL
- INTERNALLY ILLUMINATED w/ WHITE LE(D(1-120V/20A CIRCUIT)
- 2" REVEAL PAINTED SATIN WHITE
- BRICK BASE w/ 2" ALUMINUM CAP
- MOUNTED ON STL. PIPE IN CONCRETE FOUNDATION





DATE	REVISION
12.15.20	ADDED FOUNDATION & STL. DETAILS
12.16.20	UPDATED SITE PLAN

CUSTOMER APPROVAL _____ DATE _____

This design is the original and unpublished work of DOYLE SIGNS, INC. and may not be reproduced, copied or exhibited in any fashion without the expressed written consent from an authorized officer of The Company. The rights to this design may be purchased.

CLIENT	MERCHANT PLAZA	DESIGNER	KM	SALESPERSON	JST
ADDRESS	480 S. WEBER RD.	SCALE:	NOTED	SHEET NO.	2
CITY	ROMEOWILLE	STATE	IL	DATE:	11.04.2020
DRWG. NO.	90219				