

Product Name	Two Towers Regular
Product Number	DX-201
Size -- Length	13.30 m / 43' 8"
Size -- Width	8.00 m / 26' 3"
Size -- Height	3.90 m / 12' 10"
Shipping Weight	575 kg / 1267.7 lb
Shipping Volume	2.00 m ³ / 70.6 ft ³
Foundations	8
Concrete Volume	3.86 m ³ / 136.3 ft ³

	ASTM F-1487	CSA Z614	EN 1176
Ages	5 years - 12 years	5 years - 12 years	6 years - 12 years
Capacity	60	60	60
Use Zone -- Length	16.96 m / 55' 8"	16.96 m / 55' 8"	16.30 m / 53' 6"
Use Zone -- Width	11.66 m / 38' 3"	11.66 m / 38' 3"	11.00 m / 36' 1"
Fall Height	1.83 m / 6' 0"	1.37 m / 4' 6"	0.51 m / 1' 8"

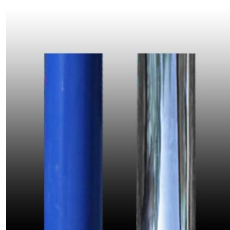
*Note: Concrete must be minimum 3500 PSI / 25MPa



Product Features:

SUPPORT POSTS:	This will be 5 1/2" (139.8mm) OD galvanized steel tubing, finished with polyester powder coating.
POST SHIELDS:	Where required, these will completely surround the post to fill in openings in the net, preventing entrapments. Shields will be made of a textile-reinforced flexible rubber material and secured with bolts.
CLIMBING NETS:	This will be 20mm diameter and 22mm diameter, polyamide (nylon) rope cable with UV protection and fire retardant solution. Each rope consists of 6 strands each containing 24 steel reinforcing strands within a polyamide sleeve, wrapped around a solid polyamide core for a total of 144 steel reinforcing strands; each end of the cable having a junction loop attached onto the cable with a finished aluminum sleeve and lined with a galvanized steel wear bar. Edge ropes will contain a solid core of wound steel cables in place of the polyamide core for a total of 168 steel reinforcing strands. Rope shall achieve a Class 7-8 Colourfastness rating.
BALL KNOTS:	This will be a one-piece compressed aluminum ball, compressed in place with 150,000 pounds force (667 kN) to prevent the connection from moving and causing premature cable wear.
BASIC FASTENERS:	All fasteners for component attachments are stainless steel.
TURNBUCKLES:	These will be steel alloy that will withstand a maximum load of over 87,675 pounds force (390 kN) along the main axis.

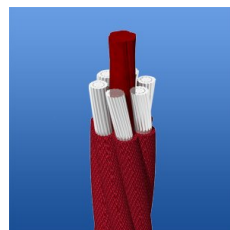
MOUNTING PLATES:	These will be made of galvanized steel. Corner anchors will contain multiple connection points to allow for adjustability of the turnbuckles as well as connection of a safety rope. Centre mast anchors will consist of a stub post that will stabilize the mast and an anchor ring that will secure the assembly to the concrete. This two-piece assembly allows for fine positioning of the post stub to be accomplished during installation, making the process simpler and easier.
ANCHOR BOLTS:	Mounting plates will be secured to concrete blocks with 7/8" (22mm) diameter x 20" (500mm) long "L" Anchor bolts, inserted into the wet concrete when poured.
INSTALLATION:	This should be installed only by a licensed playground installer, trained and certified on the relevant playground standards in place in the region of installation, e.g., NPSI, CPSI or similar certified.
COMPLIANT WITH:	CAN/CSA-Z614-07 ASTM F-1487-11 EN-1176 CPSC Handbook for Public Playground Safety
TÜV CERTIFIED:	Certified to EN 1176:2008 TÜV Rhineland Certificate N° AK50162502
IPEMA CERTIFIED:	The DX-201 identified in this specification sheet is IPEMA certified. The use and layout of the DX-201 conforms to the requirements of ASTM F1487 and CSA Z614. To verify product certification visit www.ipema.org .
OPTIONS:	Optional Equipment: <ul style="list-style-type: none"> • Net Seat (Max. Qty: 8) #DX-NS • Poured-In-Place Enclosure (Max. Qty: 6) #DX-PIP-01 • Polished Stainless Steel Post (Max. Qty: 2) #SS-POST



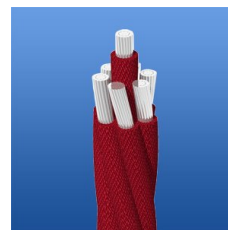
Support Posts



Seat & Shield Connector



Climbing Net - 20 mm



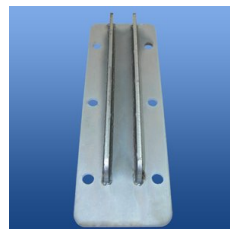
Climbing Net - 22 mm



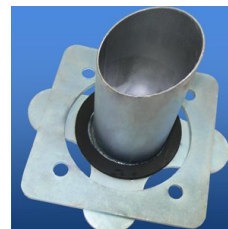
Ball Knot



Turnbuckle



Corner Anchor Plate



Adjustable Centre Anchor



Anchor Bolt