



2105 Lunt, Elk Grove Village, IL 60007

Phone: 847-434-0909 Fax: 847-434-0910

Acknowledgement

Project Number	CS405749
Customer Number	C103268
Customer PO	
Date	5/8/2019

Sold To: Edward Hospital Athletic Event Center
55 Phelps Ave
Romeoville IL 60446

Ship To: Edward Hospital Athletic Center - Noel
55 Phelps Ave
Romeoville IL 60046

Ordered By: Evan Carroll

Proposal Item	Description	Price
Athletic & Recreational Equipment	(12) New tournament 8' portable basketop (6) NEW weight cart add on for 8' Unit (1) New backboard rock holds 12 Shipping Unload , install , demonstration included 10 nba balls included 12 logos on padding , Spalding is sending colors of burgundy, gray , black to customer then we will decide what color for logo This proposal does not include any additional weight added to units or under floor.	\$85,000.00
Athletic & Recreational Equipment		\$2,000.00
Project Total:		\$87,000.00

SPALDING SPECIFICATIONS

DATE: 1/30/18

MODEL NUMBER: 401072-401075

DESCRIPTION: TOURNAMENT PORTABLE

The portable has an adjustable boom that can be set at 6', 7' or 8' offset. The unit can be set up as a single unit with a weight cart or set up back to back. The unit comes with a 42" x 72" acrylic backboard, backboard padding, unit padding and a break away rim. The weight cart comes with side padding and top cover.

SPECIFICATIONS:

Frame: the frame is made of structural steel, square, round and flat. Laser cut parts are made of an A36 steel. All framework is welded and powder-coated. The unit comes with 4 swivel wheels and has two weight boxes that each hold 160lbs of ballast. The boom pivot points use a bronze bushing with ground and polished pins. The raising and lowering is done with a cordless drill and socket and uses a threaded rod, u-joint and bearing. Once the height is set, two locks help stabilize the boom. The weight cart is made from the same material with 4 swivel wheels and has a weight box that holds approximately 970lbs of ballast. Padding is also included.

Frame Padding: The front of the unit pad is 1-1/4" thick cross-linked polyethylene foam with a density of 2.0 lb/ft³ and a sewn cover. Both sides of the unit are fitted with 1-1/2" thick cross-linked polyethylene foam with a density of 2.0 lb/ft³ and a sewn cover. The covers are 18oz. vinyl and are attached with hook and loop. Padding is designed to stay on the unit when transporting. Side padding for the weight cart is 1-1/2" thick cross-linked polyethylene foam with a density of 2.0 lb/ft³ and a sewn cover. The top has a vinyl cover.

Backboard: The backboard is a 42" x 72" acrylic backboard with an inner steel frame and outer aluminum frame.

Goal: The rim is a slam dunk pro, positive lock rim with the tube-tie system.

SHIPPING WEIGHT: approximately 1200 lbs. for main unit (includes backboard, backboard padding, rim and padding.)

SHIPPING WEIGHT: approximately 1180 lbs. for weight cart (includes padding)

1-85"x40"x64"---1030lbs. (unit)

1-7"x40"x47"---35lbs (unit pads)

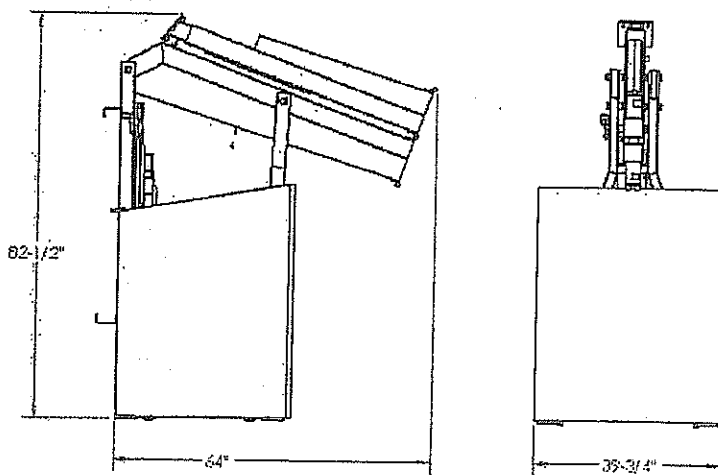
1-73"x43"x3"---103lbs (backboard)

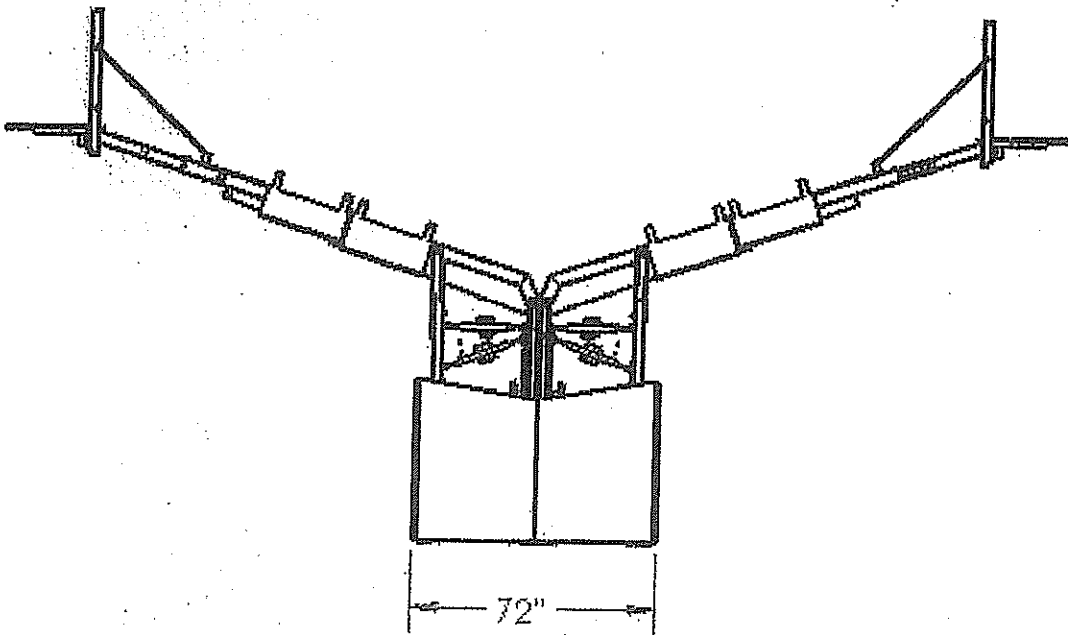
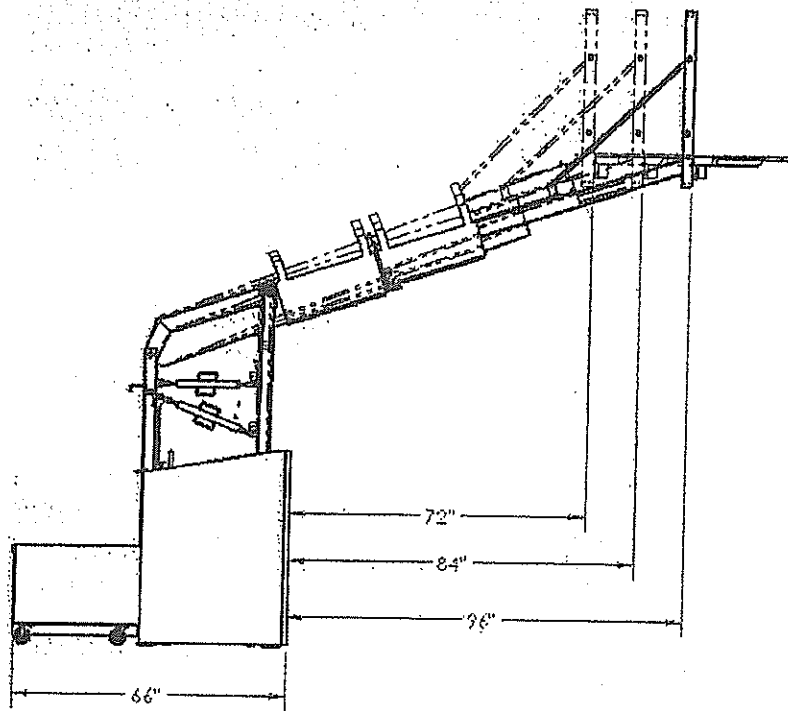
1-4"x12"x46"---4lbs (backboard pad)

1-8"x28"x25"---26lbs (rim)

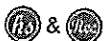
1-31"x36"x24"---1170lbs (weight cart)

1-20"x30"x4"---8lbs (weight cart pads)





8' TOURNAMENT PORTABLE BACKSTOP



- Easily sets up in under 45 minutes using minimal staff
- Stackable weight carts provide additional space when transporting
- Fork pockets allow for easy movement on and off trucks as well as setting the backstop into place
- Backstop contains ALM technology to easily raise the unit with a drill & socket onto four quick leveling corner foot pads at play height
- Quick attach mounting plate allows simple backboard installation
- Telescoping boom easily adjusts to 6', 7', and 8' extensions while maintaining the 10' height
- Easy attach padding wraps the entire base of the unit for safety and creates excellent sponsorship rental space
- Powder coated in Spalding® navy vein with navy blue pads – custom color options available

ASK ABOUT
OUR VOLUME
PRICING

Its new look, enhanced performance and setup configurations are designed for indoor tournament play

401-074 8' Tournament Portable Base
401-077 8' Tournament Portable Weight Cart
401-034 Backboard Rack (holds 12)

Compact design allows for transportation and storage to and from the court with the folding boom

Backboard braces and rim are conveniently stored in the base during transport

8FT BACK TO BACK

Units can be set up individually with the add-on 1000 lbs. weight cart or back to back for close court play

Up to 28 units can be shipped on a 53' trailer subject to backstop configurations

*Patent Pending

spaldingequipment.com/portable