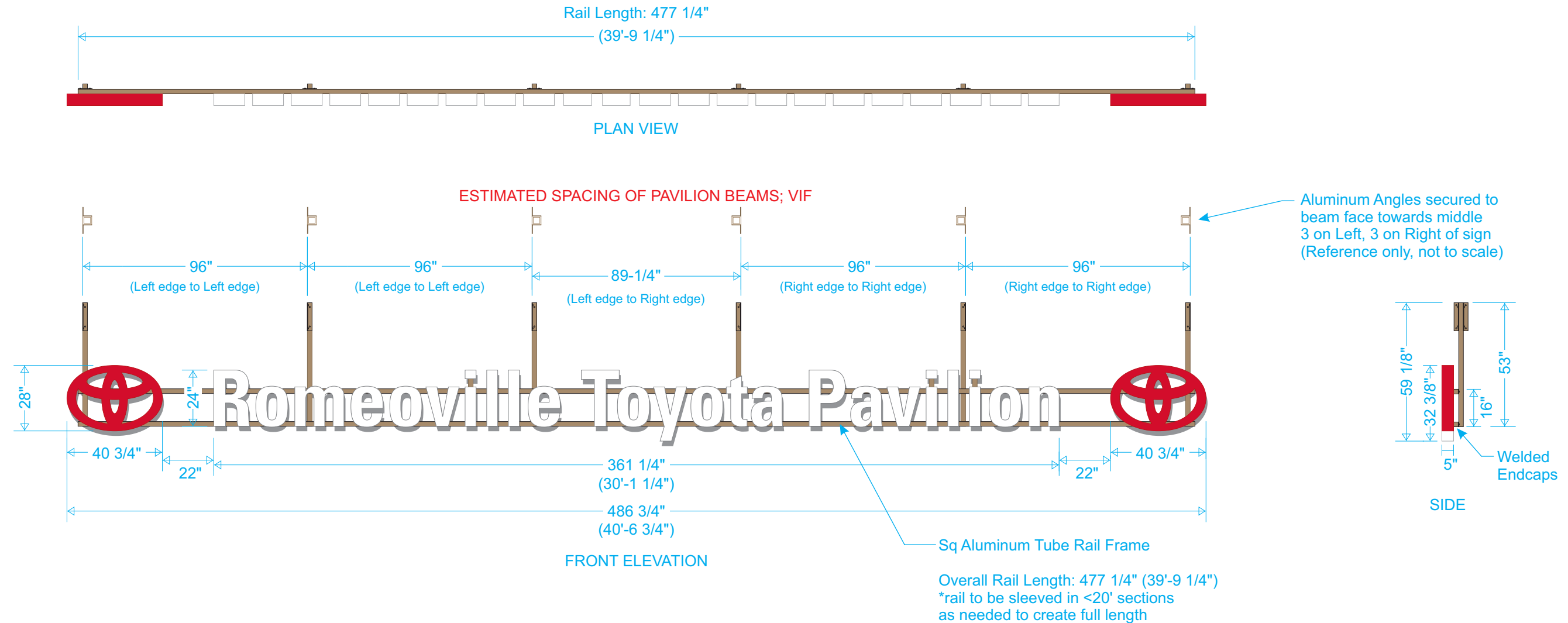


Village of Romeoville

Romeoville Toyota Park Pavilion ID Sign
1050 W Romeoville Rd
Romeoville, IL

#7026892

94.65 SqFt



Non-Illuminated Reverse Channel Lettering and Logos on Suspended Rail Frame - Qty: (1)

$$\overline{1/4'' = 1'}$$

- 5"D Fabricated Aluminum Reverse Channel Lettering and Logos w/ Aluminum faces, returns, and closed backs, unit painted to match White / Red as shown
- Lettering mounted to extruded aluminum tube Rail Frame w/ necessary hardware as needed, unit painted to match background Brown of pavilion
- Rail Frame secured to pavilion beams w/ aluminum angle and necessary hardware as needed; unit and fasteners painted to match Brown
- Final rail frame specifications TBD pending engineering

White

Toyota Red
PMS 186C

Brown to match Pavilion
Color TBD



934 N. Church
Elmhurst, IL 60126

tel: 630.333.4900
fax: 630.333.4915

Client
Village of Romeoville

Customer Approval

Project Name
Toyota Park Pavilion ID Sign
1050 W Romeoville Rd, Romeoville, IL

Tracker Number
7026892

Date
03.23.18

Drawn By
VM

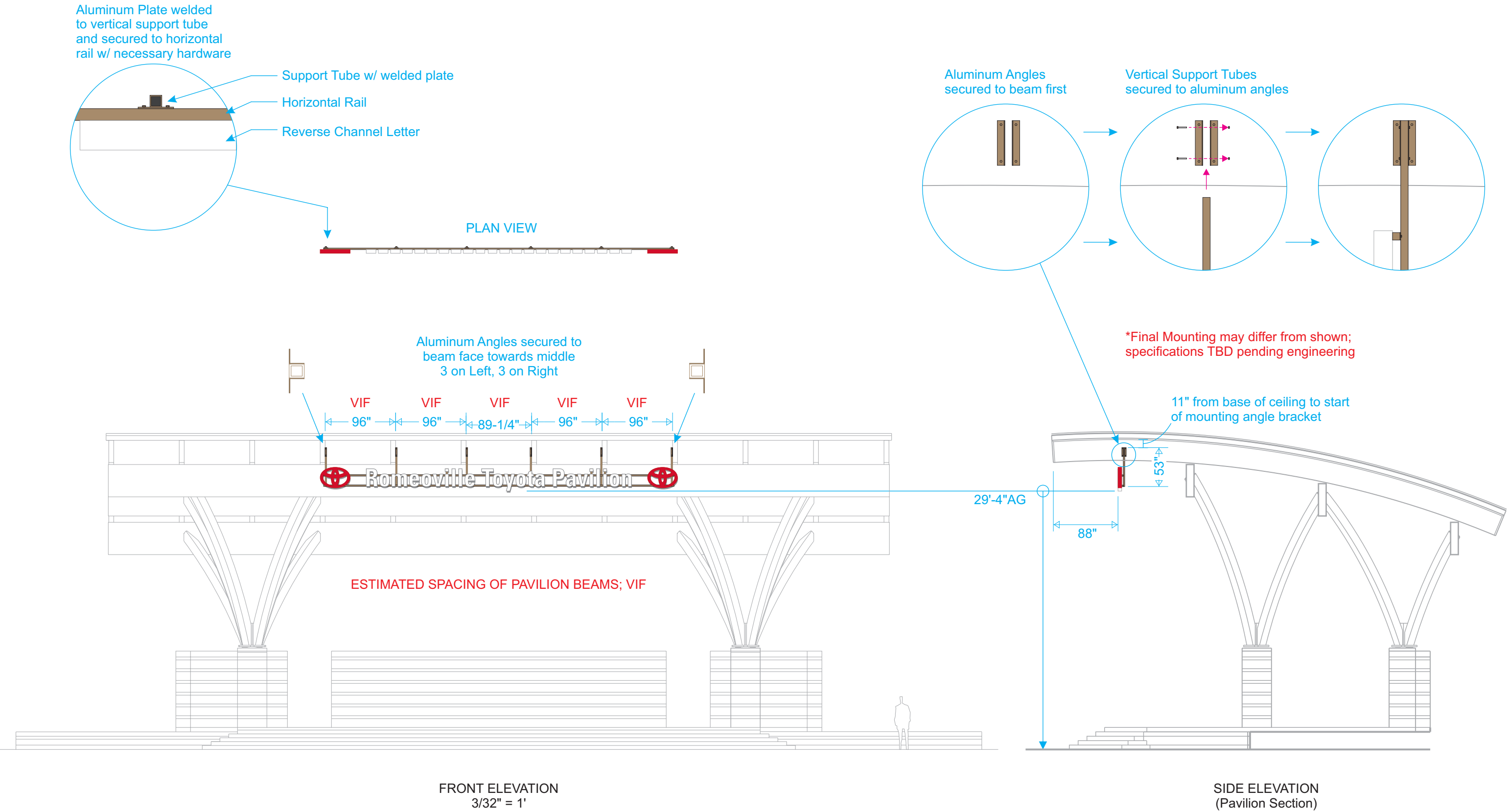
Revisions

03.29.18
05.17.18
05.23.18

© COPYRIGHT 2018 BY SOUTH WATER SIGNS.
ALL DESIGNS ARE THE SOLE PROPERTY
OF SOUTH WATER AND MAY NOT BE
REPRODUCED IN PART OR WHOLE
WITHOUT WRITTEN PERMISSION
FROM SOUTH WATER SIGNS.



Toyota Park Pavilion ID Sign | Construction Details



Toyota Park Pavilion ID Sign | Proposal

