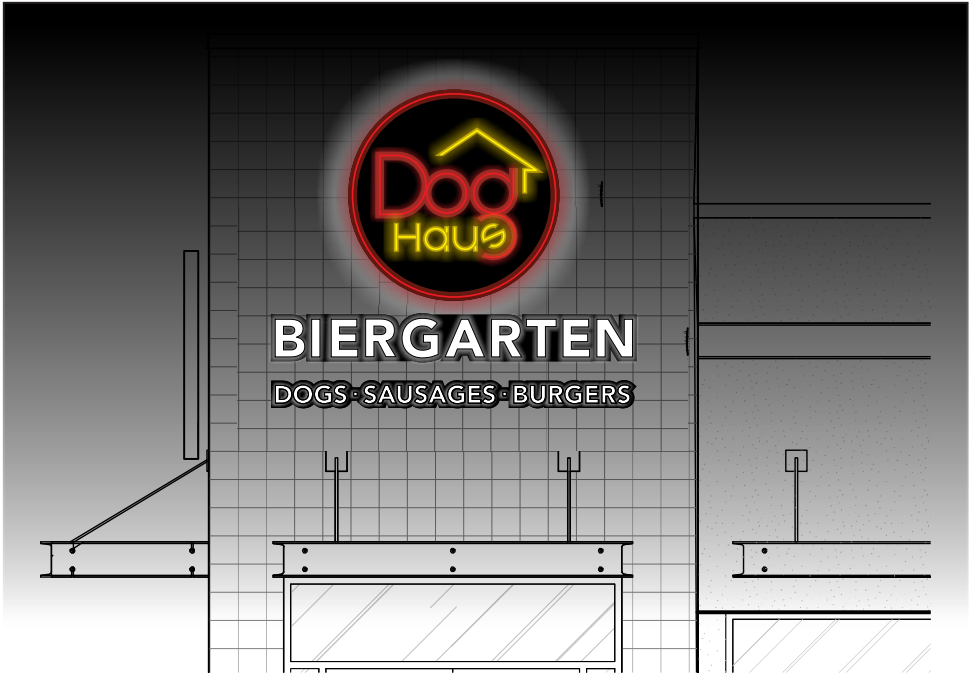


STOREFRONT ELEVATION  
Scale: 3/16"=1'-0"

ALL SIGN SIZES HAVE BEEN CALCULATED OFF  
ARCHITECTURAL PRINTS AS SHOWN

Sample Simulated Illum. View



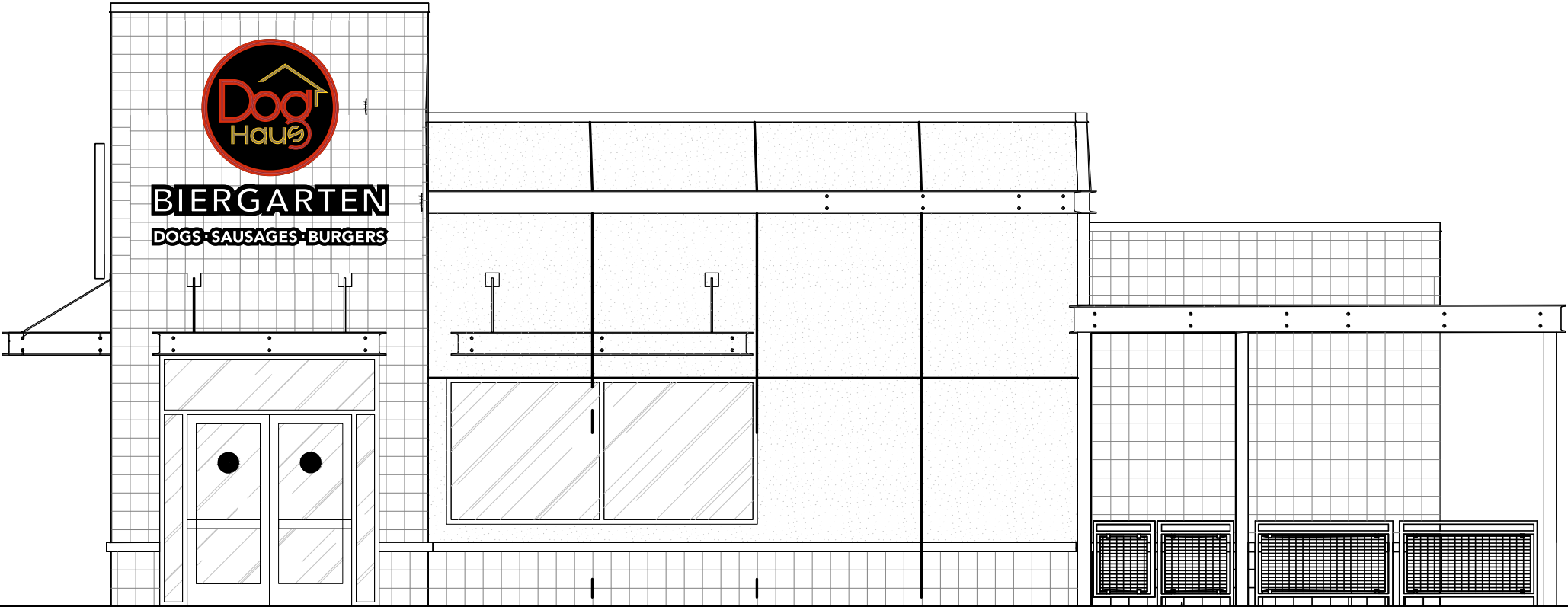
T.O. PARAPET  
122'-0"

T.O. PARAPET  
118'-0"

B.O. CANOPY  
110'-0"

T.O. COUNTER  
103'-6"  
T.O. SILL  
102'-4"

FFE  
100'-0"



B.O. CANOPY  
T.O. PARAPET  
114'-0"

B.O. CANOPY  
110'-0"

FFE  
100'-0"



www.mcsign.com

CLIENT:



ADDRESS:

NWC WEBER & RENWICK RD.  
ROMEOVILLE, IL 60446

PAGE NO.:

1

TICKET NO.:

495591

PROJECT MANAGER:

JASON WELCH

ELECTRONIC FILE NAME:

DOGHAUS\2018\IL\ROMEOVILLE

DATE:

5/14/18

DESIGNER:

SI

REVISION HISTORY:


CLIENT SIGNATURE:

APPROVAL DATE:



Corporate Office:  
8959 Tyler Boulevard  
Mentor, Ohio 44060  
440-209-6200  
800-627-4460

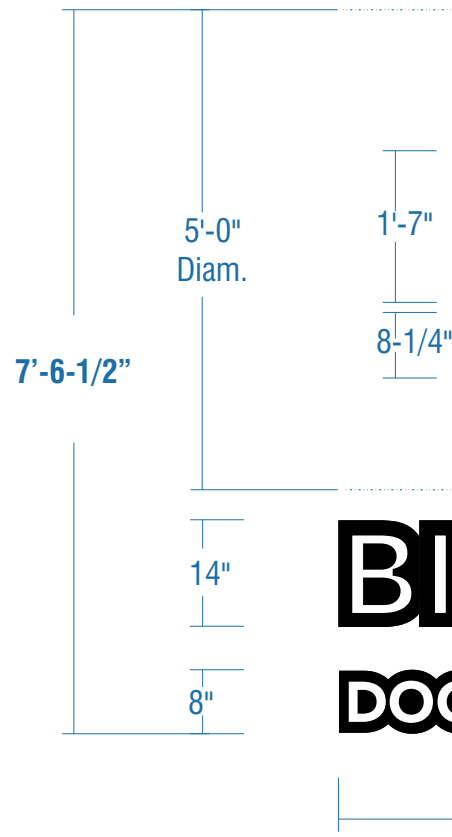
334 Industrial Park Road  
Bluefield, Virginia 24605  
877-779-9977

NOTE: PRINTS ARE THE EXCLUSIVE PROPERTY OF "MC SIGN COMPANY". ANY UNAUTHORIZED USE OR DUPLICATION WILL RESULT IN A 20% CHARGE PER OCCURRENCE PER THE VALUE OF THE DISPLAY. © MC SIGN CO 1998

# CUSTOM ILLUMINATED SIGNAGE

Scale: 1/2"=1'-0"

65.3 Square Feet



**BIERGARTEN**  
**DOGS-SAUSAGES-BURGERS**

## COLOR PALETTE

- Black - Satin Finish  
3M 3630-22 Matte Black
- Pantone 485 C  
3M 3630-33 Red
- Pantone 116 C  
3M 3630-015 Yellow
- 3M 7725-10 Opaque White
- Digitally printed to match  
10% Black
- SPACERS:**  
To match wall color TBV

USEABLE ARTWORK  
REQUIRED  
PRIOR TO FINAL PRODUCTION!



## HALO LIT/ NEON GRAPHICS

## BIERGARTEN DOGS-SAUSAGES-BURGERS

## FACE LIT / HALO LIT ON BACKER

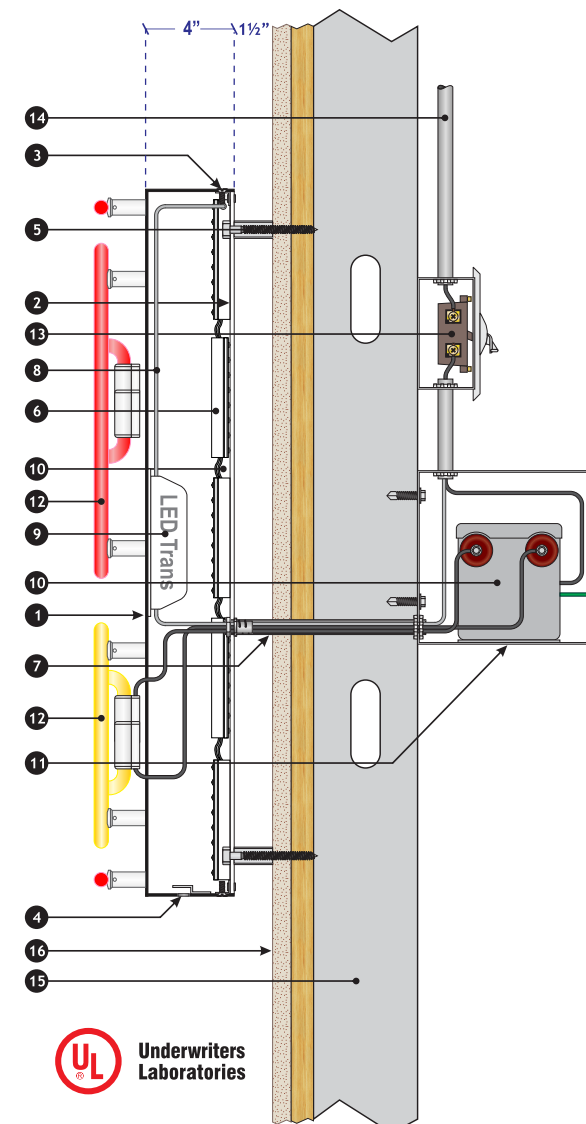
- BACKER:** 4" deep reverse pan construction; .090 alum face w/ welded .063 alum. returns - Black Satin finish on face & returns
- BACKS:** Painted / (surface applied vinyl) copy and border to match colors shown
- BACKS:** 1/8" Clear polycarbonate
- ILLUM.:** White LED's inside return for reverse halo illum.; 13 mm exposed red and gold neon on face of return  
**LED power supply to be self contained**  
**Neon transformer to be remote**
- INSTALL:** 1-1/2" stand off from wall surface;  
Spacers to be provided painted to match wall

- CONTOUR BACKER:** 2" Deep fab'd alum. backer cabinet - All painted black - Satin
- FACES:** 3/16" #7328 White acrylic with surface applied vinyl overlay  
**CONFIRM WHAT PORTION OF GRAPHIC IS 10% GRAY**
- TRIMCAP:** 1" std. black jewelrite
- RETURNS:** 3" deep .040 alum. - Inside pre-painted white; Outside painted Satin Black
- BACKS:** 1/8" thick clear polycarbonate
- ILLUM.:** White LED as required by manufacturer;  
**Remote Power Supplies**
- INSTALL:** Channel letters to be stood off 1-1/2" from cabinet;  
Cabinet to be installed flush to wall using 3/8" all thread fasteners with wood blocking as required

## DOGHAUS SECTION VIEW

For Reference Only

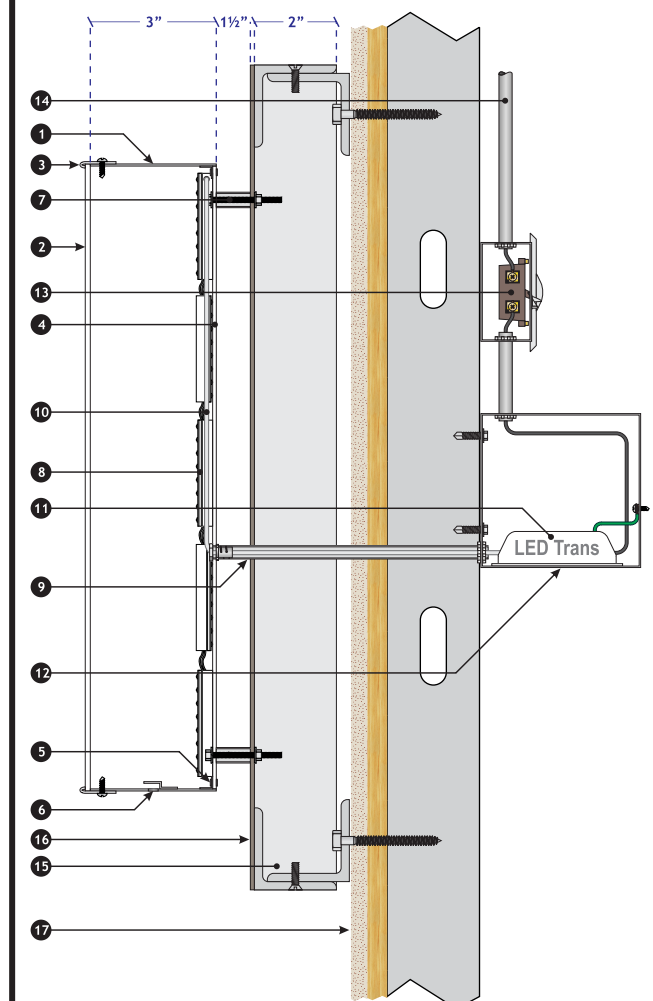
- 4" deep custom fabricated aluminum reverse pan.
- 1/8" thick clear Lexan letter back.
- Angle clip attachment with pop rivet.
- 1/4" weep hole with light tight baffle
- Attachment anchor with 1 1/2" spacer
- White LED module for halo illumination of disk.
- Electrical pass-thru
- Secondary power supply
- UL listed LED transformer
- UL listed neon transformer
- Galvanized vented transformer housing
- 13mm exposed neon (red & gold)
- Emergency disconnect switch in primary electrical circuit
- Primary electrical circuit
- Building framing system
- Finished building surface



## TAGLINES SECTION VIEW

For Reference Only

- 3" deep custom fabricated aluminum letter return
- 3/16" thick translucent white acrylic plastic letter face
- 1" Jewelrite trim cap edge secured with pan head screw.
- 1/8" thick clear Lexan letter back.
- Angle clip attachment with pop rivet.
- 1/4" weep hole with light tight baffle
- Attachment anchor with 1 1/2" spacer (minimum 3 per letter).
- White LED module
- Electrical pass-thru
- Secondary power supply
- UL listed LED transformer
- Galvanized vented transformer housing
- Emergency disconnect switch in primary electrical circuit
- Primary electrical circuit
- Wireway framing system
- Finished wireway surface painted black
- Finished building surface



CLIENT:



TICKET NO.:  
495591

DATE:  
5/14/18

PROJECT MANAGER:  
JASON WELCH

DESIGNER:  
SI

ELECTRONIC FILE NAME:  
DOGHAUS\2018\VR\ROMEOWILLE

ADDRESS:

NWC WEBER & RENWICK RD.  
ROMEOWILLE, IL 60446

PAGE NO.:

2

## REVISION HISTORY:


CLIENT SIGNATURE:

APPROVAL DATE:



www.mcsign.com

NOTE: PRINTS ARE THE EXCLUSIVE PROPERTY OF "MC SIGN COMPANY". ANY UNAUTHORIZED USE OR DUPLICATION WILL RESULT IN A 20% CHARGE PER OCCURRENCE PER THE VALUE OF THE DISPLAY. © MC SIGN CO 1998



**Corporate Office:**  
8959 Tyler Boulevard  
Mentor, Ohio 44060  
440-209-6200  
800-627-4460

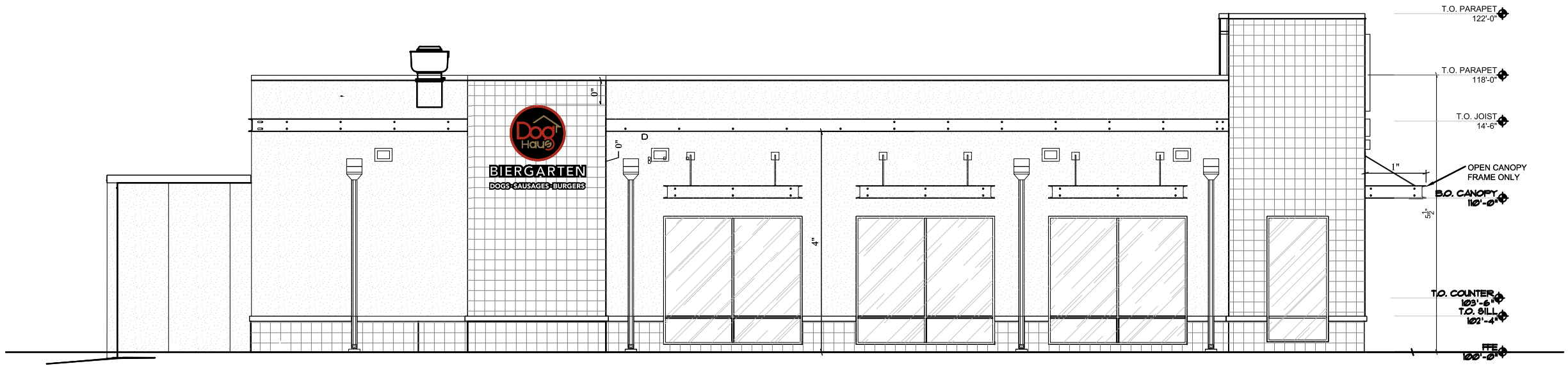
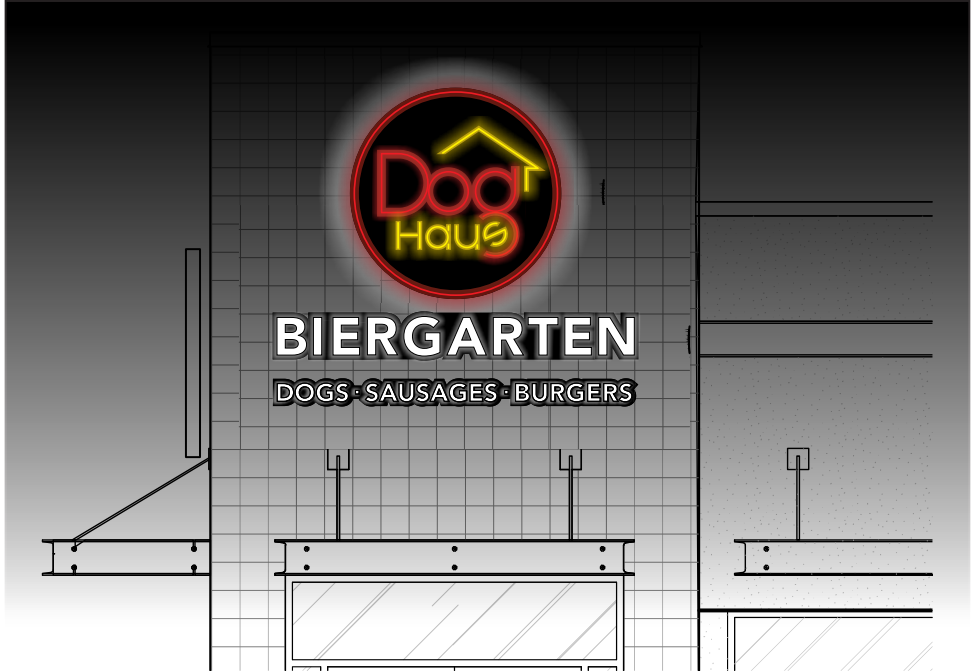
334 Industrial Park Road  
Bluefield, Virginia 24605  
877-779-9977

LEFT EXTERIOR ELEVATION

Scale: 1/8"=1'-0"

ALL SIGN SIZES HAVE BEEN CALCULATED OFF  
ARCHITECTURAL PRINTS AS SHOWN

Sample Simulated Illum. View



Partner with the best.



www.mcsign.com

CLIENT:



ADDRESS:

NWC WEBER & RENWICK RD.  
ROMEOVILLE, IL 60446

PAGE NO.:

3

TICKET NO.:

495591

PROJECT MANAGER:

JASON WELCH

ELECTRONIC FILE NAME:

DOGHAUS\2018\IL\ROMEOVILLE

DATE:

5/14/18

DESIGNER:

SI

REVISION HISTORY:


CLIENT SIGNATURE:

APPROVAL DATE:



**Corporate Office:**  
8959 Tyler Boulevard  
Mentor, Ohio 44060  
440-209-6200  
800-627-4460

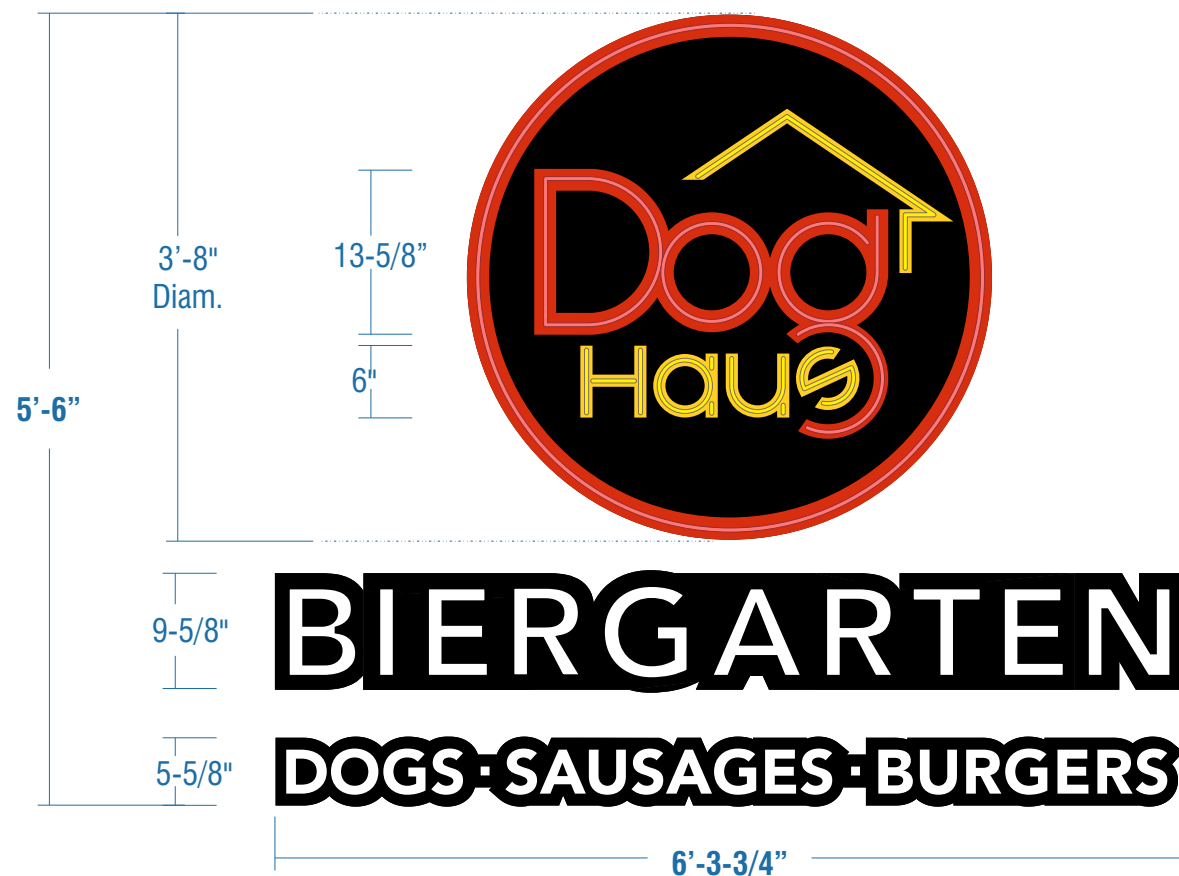
334 Industrial Park Road  
Bluefield, Virginia 24605  
877-779-9977

NOTE: PRINTS ARE THE EXCLUSIVE PROPERTY OF "MC SIGN COMPANY". ANY UNAUTHORIZED USE OR DUPLICATION WILL RESULT IN A 20% CHARGE PER OCCURRENCE PER THE VALUE OF THE DISPLAY. © MC SIGN CO 1998



CUSTOM ILLUMINATED SIGNAGE  
Scale: 3/4"=1'-0"

34.7 Square Feet



COLOR PALETTE

- Black - Satin Finish  
3M 3630-22 Matte Black
- Pantone 485 C  
3M 3630-33 Red
- Pantone 116 C  
3M 3630-015 Yellow
- 3M 7725-10 Opaque White
- Digitally printed to match  
10% Black
- SPACERS:  
To match wall color TBV



HALO LIT/ NEON GRAPHICS

- BACKER:** 4" deep reverse pan construction; .090 alum face w/ welded .063 alum. returns - Black Satin finish on face & returns
- BACKS:** Painted / (surface applied vinyl) copy and border to match colors shown
- BACKS:** 1/8" Clear polycarbonate
- ILLUM.:** White LED's inside return for reverse halo illum.; 13 mm exposed red and gold neon on face of return  
**LED power supply to be self contained**  
**Neon transformer to be remote**
- INSTALL:** 1-1/2" stand off from wall surface;  
Spacers to be provided painted to match wall

BIERGARTEN  
DOGS-SAUSAGES-BURGERS

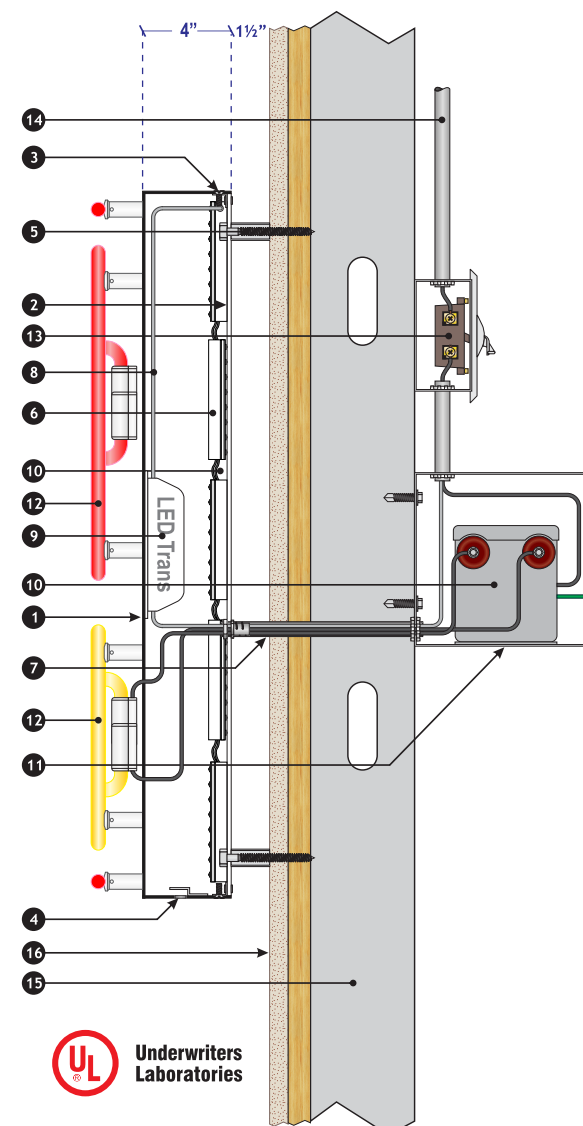
FACE LIT / HALO LIT ON BACKER

- CONTOUR BACKER:** 2" Deep fab'd alum. backer cabinet - All painted black - Satin
- FACES:** 3/16" #7328 White acrylic with surface applied vinyl overlay  
**CONFIRM WHAT PORTION OF GRAPHIC IS 10% GRAY**
- TRIMCAP:** 1" std. black jewelrite
- RETURNS:** 3" deep .040 alum. - Inside pre-painted white; Outside painted Satin Black
- BACKS:** 1/8" thick clear polycarbonate
- ILLUM.:** White LED as required by manufacturer;  
**Remote Power Supplies**
- INSTALL:** Channel letters to be stood off 1-1/2" from cabinet;  
Cabinet to be installed flush to wall using 3/8" all thread fasteners with wood blocking as required

DOGHAUS SECTION VIEW

For Reference Only

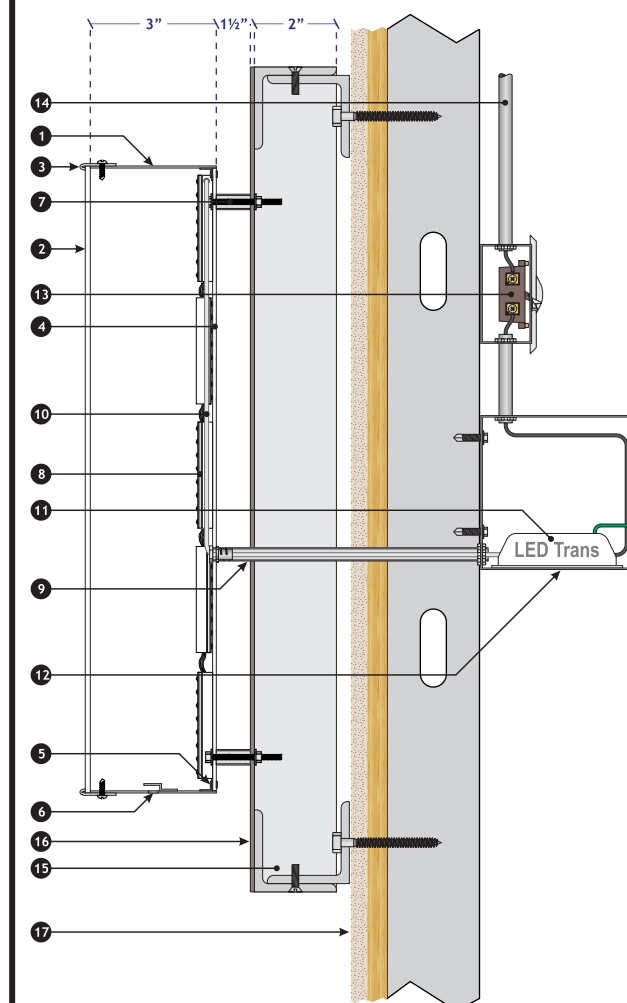
- 4" deep custom fabricated aluminum reverse pan.
- 1/8" thick clear Lexan letter back.
- Angle clip attachment with pop rivet.
- 1/4" weep hole with light tight baffle
- Attachment anchor with 1/2" spacer
- White LED module for halo illumination of disk.
- Electrical pass-thru
- Secondary power supply
- UL listed LED transformer
- UL listed neon transformer
- Galvanized vented transformer housing
- 13mm exposed neon (red & gold)
- Emergency disconnect switch in primary electrical circuit
- Primary electrical circuit
- Building framing system
- Finished building surface



TAGLINES SECTION VIEW

For Reference Only

- 3" deep custom fabricated aluminum letter return
- 3/16" thick translucent white acrylic plastic letter face
- 1" Jewelrite trim cap edge secured with pan head screw.
- 1/8" thick clear Lexan letter back.
- Angle clip attachment with pop rivet.
- 1/4" weep hole with light tight baffle
- Attachment anchor with 1/2" spacer (minimum 3 per letter).
- White LED module
- Electrical pass-thru
- Secondary power supply
- UL listed LED transformer
- Galvanized vented transformer housing
- Emergency disconnect switch in primary electrical circuit
- Primary electrical circuit
- Wireway framing system
- Finished wireway surface painted black
- Finished building surface



Partner with the best.



www.mcsign.com

CLIENT:



ADDRESS:

NWC WEBER & RENWICK RD.  
ROMEIOVILLE, IL 60446

PAGE NO.:

4

TICKET NO.:

495591

DATE:

5/14/18

PROJECT MANAGER:

JASON WELCH

DESIGNER:

SI

ELECTRONIC FILE NAME:

DOGHAUS\2018\ROMEIOVILLE

REVISION HISTORY:

NO.	DESCRIPTION

CLIENT SIGNATURE:

APPROVAL DATE:



**Corporate Office:**  
8959 Tyler Boulevard  
Mentor, Ohio 44060  
440-209-6200  
800-627-4460

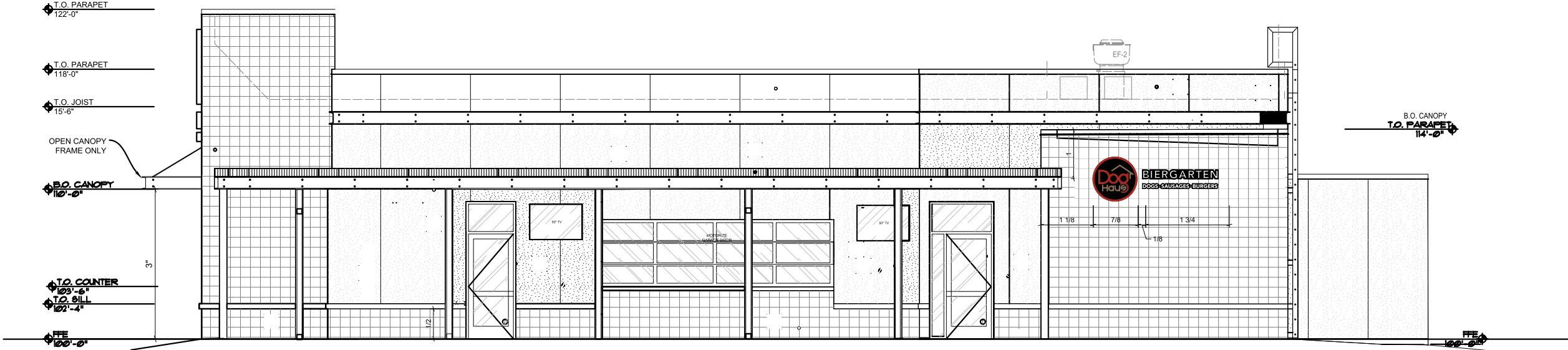
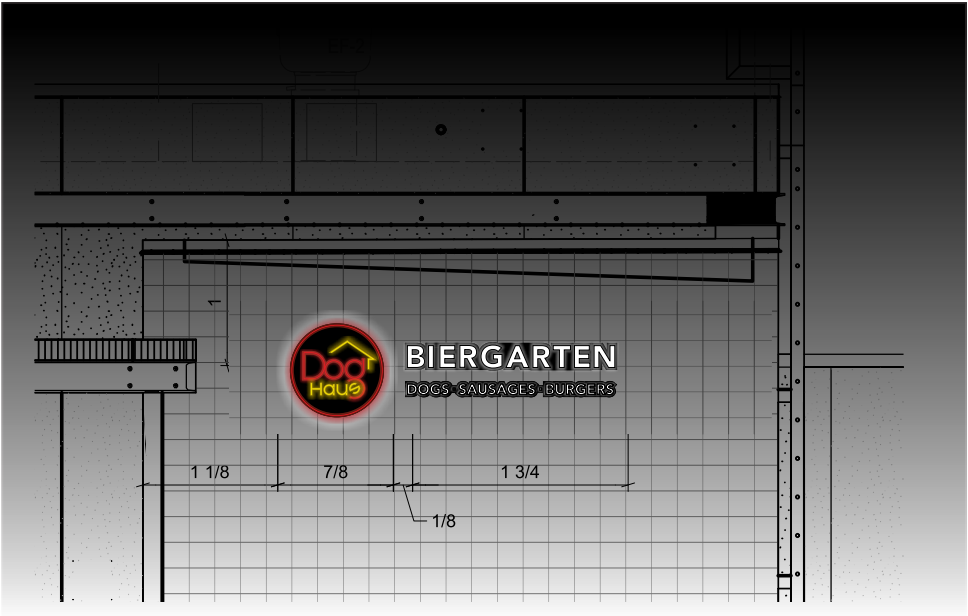
334 Industrial Park Road  
Bluefield, Virginia 24605  
877-779-9977

NOTE: PRINTS ARE THE EXCLUSIVE PROPERTY OF "MC SIGN COMPANY". ANY UNAUTHORIZED USE OR DUPLICATION WILL RESULT IN A 20% CHARGE PER OCCURRENCE PER THE VALUE OF THE DISPLAY. © MC SIGN CO 1998

RIGHT EXTERIOR ELEVATION  
Scale: 1/8"=1'-0"

ALL SIGN SIZES HAVE BEEN CALCULATED OFF  
ARCHITECTURAL PRINTS AS SHOWN

Sample Simulated Illum. View



www.mcsign.com

CLIENT:



ADDRESS:

NWC WEBER & RENWICK RD.  
ROMEOVILLE, IL 60446

PAGE NO.:

5

TICKET NO.:

495591

PROJECT MANAGER:

JASON WELCH

ELECTRONIC FILE NAME:

DOGHAUS\2018\IL\ROMEOVILLE

DATE:

5/14/18

DESIGNER:

SI

REVISION HISTORY:


CLIENT SIGNATURE:

APPROVAL DATE:



**Corporate Office:**  
8959 Tyler Boulevard  
Mentor, Ohio 44060  
**440-209-6200**  
**800-627-4460**

334 Industrial Park Road  
Bluefield, Virginia 24605  
**877-779-9977**

NOTE: PRINTS ARE THE EXCLUSIVE PROPERTY OF "MC SIGN COMPANY". ANY UNAUTHORIZED USE OR DUPLICATION WILL RESULT IN A 20% CHARGE PER OCCURRENCE PER THE VALUE OF THE DISPLAY. © MC SIGN CO 1998

CUSTOM ILLUMINATED SIGNAGE  
Scale: 3/4"=1'-0"

25.3 Square Feet



USEABLE ARTWORK  
REQUIRED  
PRIOR TO FINAL PRODUCTION!

COLOR PALETTE	
Black - Satin Finish	
Pantone 485 C 3M 3630-33 Red	
Pantone 116 C 3M 3630-015 Yellow	
3M 7725-10 Opaque White	
Digitally printed to match 10% Black	
SPACERS: To match wall color TBV	



HALO LIT/ NEON GRAPHICS

- BACKER:** 4" deep reverse pan construction; .090 alum face w/ welded .063 alum. returns - Black Satin finish on face & returns
- BACKS:** Painted / (surface applied vinyl) copy and border to match colors shown
- BACKS:** 1/8" Clear polycarbonate
- ILLUM. :** White LED's inside return for reverse halo illum.; 13 mm exposed red and gold neon on face of return  
**LED power supply to be self contained**  
**Neon transformer to be remote**
- INSTALL:** 1-1/2" stand off from wall surface;  
Spacers to be provided painted to match wall

BIERGARTEN  
DOGS-SAUSAGES-BURGERS

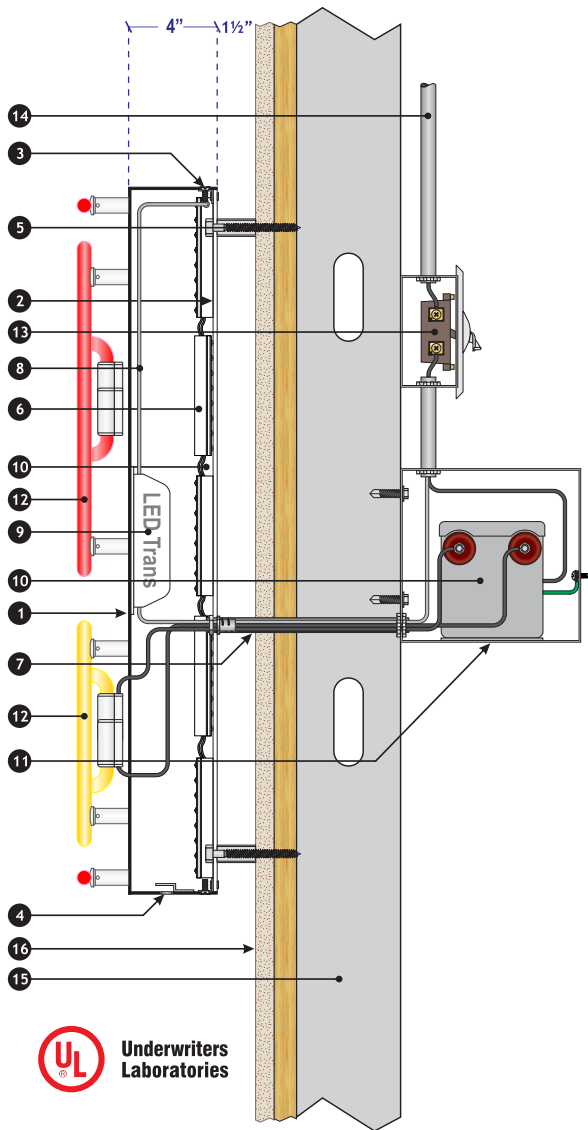
FACE LIT / HALO LIT ON BACKER

- CONTOUR BACKER:** 2" Deep fab'd alum. backer cabinet - All painted black - Satin
- FACES:** 3/16" #7328 White acrylic with surface applied vinyl overlay  
**CONFIRM WHAT PORTION OF GRAPHIC IS 10% GRAY**
- TRIMCAP:** 1" std. black jewelite
- RETURNS:** 3" deep .040 alum. - Inside pre-painted white; Outside painted Satin Black
- BACKS:** 1/8" thick clear polycarbonate
- ILLUM. :** White LED as required by manufacturer;  
**Remote Power Supplies**
- INSTALL:** Channel letters to be stood off 1-1/2" from cabinet;  
Cabinet to be installed flush to wall using 3/8" all thread fasteners with wood blocking as required

DOGHAUS SECTION VIEW

For Reference Only

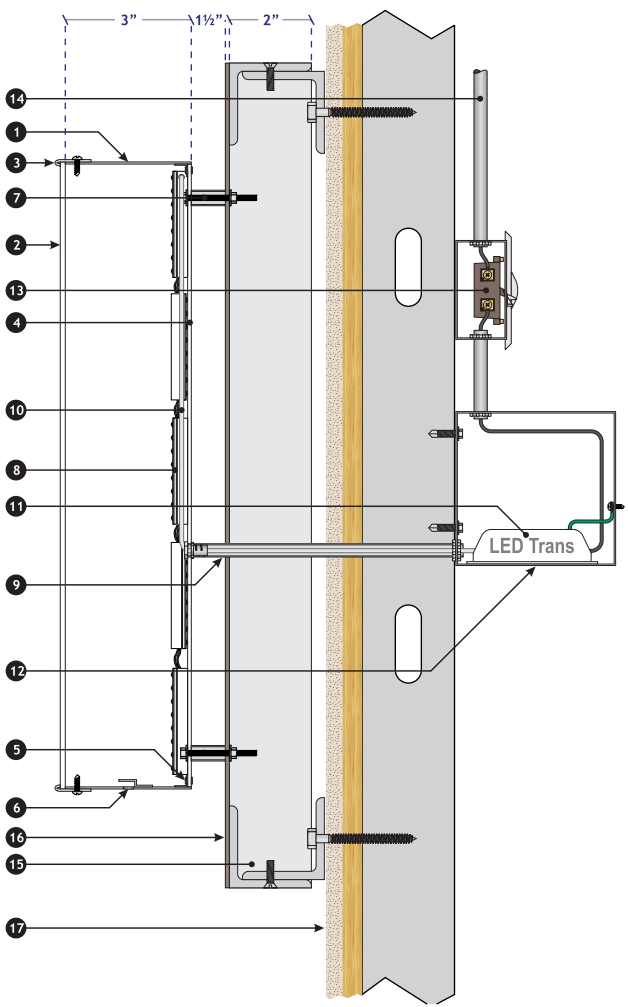
1. 4" deep custom fabricated aluminum reverse pan.
2. 1/8" thick clear Lexan letter back.
3. Angle clip attachment with pop rivet.
4. 1/4" weep hole with light tight baffle
5. Attachment anchor with 1 1/2" spacer
6. White LED module for halo illumination of disk.
7. Electrical pass-thru
8. Secondary power supply
9. UL listed LED transformer
10. UL listed neon transformer
11. Galvanized vented transformer housing
12. 13mm exposed neon (red & gold)
13. Emergency disconnect switch in primary electrical circuit
14. Primary electrical circuit
15. Building framing system
16. Finished building surface



TAGLINES SECTION VIEW

For Reference Only

1. 3" deep custom fabricated aluminum letter return
2. 3/16" thick translucent white acrylic plastic letter face
3. 1" Jewelite trim cap edge secured with pan head screw.
4. 1/8" thick clear Lexan letter back.
5. Angle clip attachment with pop rivet.
6. 1/4" weep hole with light tight baffle
7. Attachment anchor with 1 1/2" spacer (minimum 3 per letter).
8. White LED module
9. Electrical pass-thru
10. Secondary power supply
11. UL listed LED transformer
12. Galvanized vented transformer housing
13. Emergency disconnect switch in primary electrical circuit
14. Primary electrical circuit
15. Wireway framing system
16. Finished wireway surface painted black
17. Finished building surface



Partner with the best.



www.mcsign.com

CLIENT:



ADDRESS:

NWC WEBER & RENWICK RD.  
ROMEDEVILLE, IL 60446

PAGE NO.:

6

TICKET NO.:

495591

PROJECT MANAGER:

JASON WELCH

ELECTRONIC FILE NAME:

DOGHAUS\2018\ROMEDEVILLE

DATE:

5/14/18

DESIGNER:

SI

REVISION HISTORY:


CLIENT SIGNATURE:

APPROVAL DATE:



**Corporate Office:**  
8959 Tyler Boulevard  
Mentor, Ohio 44060  
440-209-6200  
800-627-4460

334 Industrial Park Road  
Bluefield, Virginia 24605  
877-779-9977

NOTE: PRINTS ARE THE EXCLUSIVE PROPERTY OF "MC SIGN COMPANY". ANY UNAUTHORIZED USE OR DUPLICATION WILL RESULT IN A 20% CHARGE PER OCCURRENCE PER THE VALUE OF THE DISPLAY. © MC SIGN CO 1998