

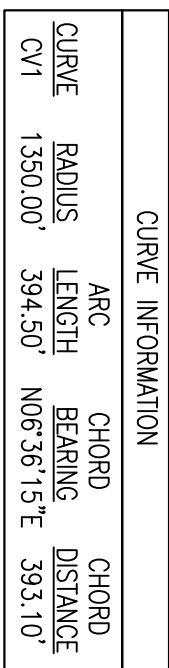
EXCEPTING THEREFROM THE FOLLOWING

0 50 100 200

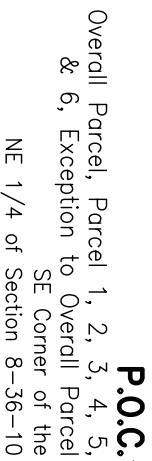
Scale 1" = 100'

BASIS OF BEARINGS:

ILLINOIS STATE PLANE EAST ZONE
(MILL COUNTY DATUM)



P.I.N. 11-04-09-200-020



PARCEL 4:

OF 6.36 FEET TO THE POINT OF BEGINNING, IN WILL COUNTY, ILLINOIS.

REVISÉD 11/29/16



JACOB & HEFFNER
ASSOCIATES

1333 Butterfield Road, Suite 300, Downers Grove, 06151
PHONE: (630) 652-6600, FAX: (630) 652-6601
www.jacobandheffner.com
Illinois Professional Design Firm
License No. 184-003073 Exp. 4/30/17

4: \\C:\C085\C085cc\5\Draw\Easements\C085CC Easement.dwg