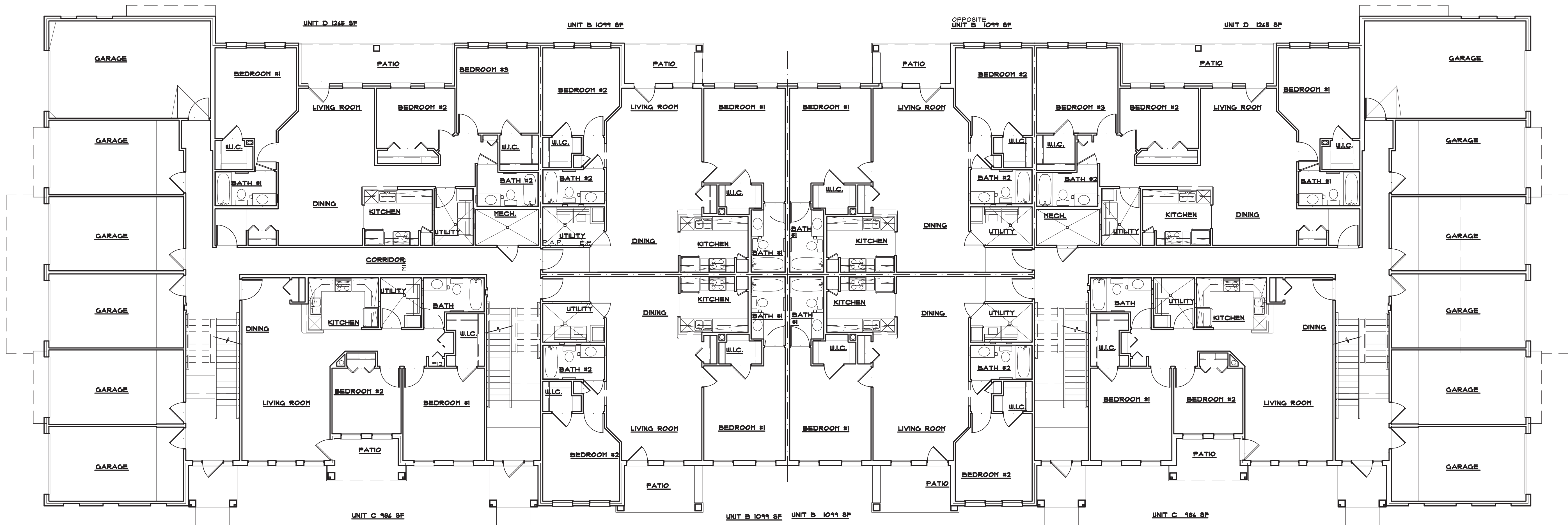


NOTE:
MATERIALS LISTED TO MATCH
APARTMENT BUILDINGS.



FIRST FLOOR BUILDING PLAN - BUILDING TYPE 'A'

36 UNIT BUILDING

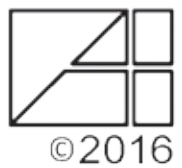
SCALE: 1/8" = 1'-0"

NOTE: FLOOR PLANS ARE CONCEPTUAL

PROPOSED VILLAGE PLACE APARTMENTS

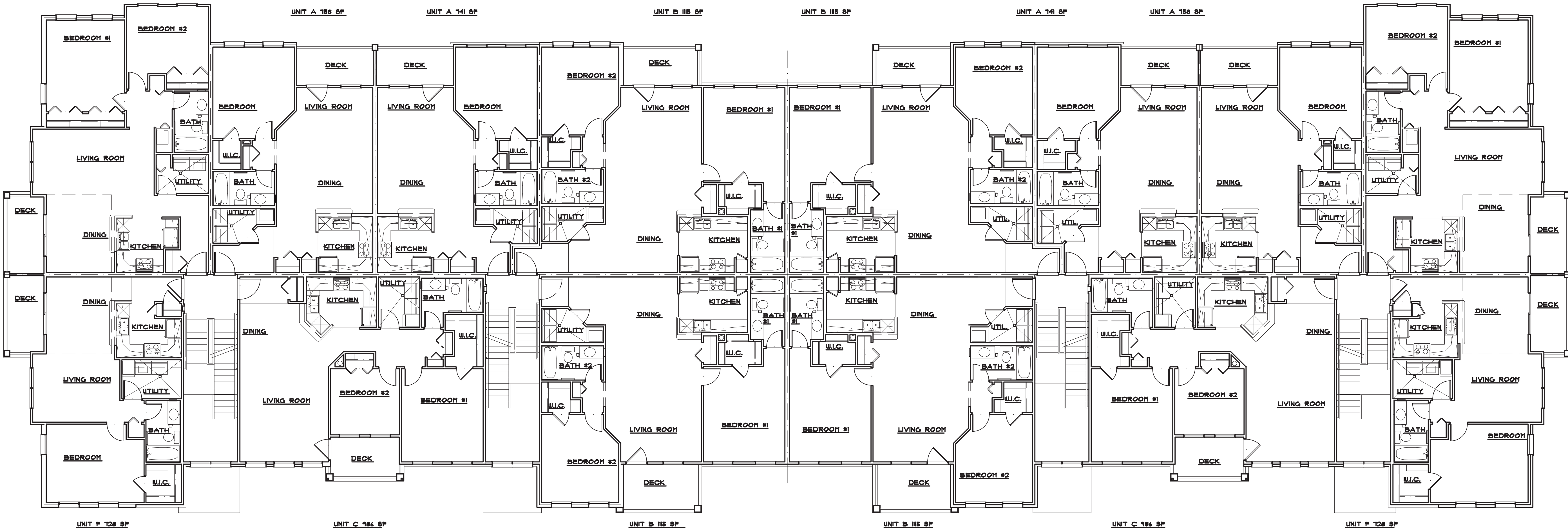
ROMEDEVILLE, ILLINOIS

Alexander V. Bogaerts + Associates, P.C.
Architecture • Planning • Interior Design
2445 Franklin Road
Bloomfield Hills, MI 48302
248 • 334 • 5000



©2016

NOTE:
MATERIALS LISTED TO MATCH
APARTMENT BUILDINGS.



SECOND FLOOR BUILDING PLAN - BUILDING TYPE ‘A’

36 UNIT BUILDING

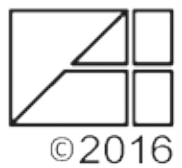
SCALE: 1/8" = 1'-0"

NOTE: FLOOR PLANS ARE CONCEPTUAL

PROPOSED VILLAGE PLACE APARTMENTS

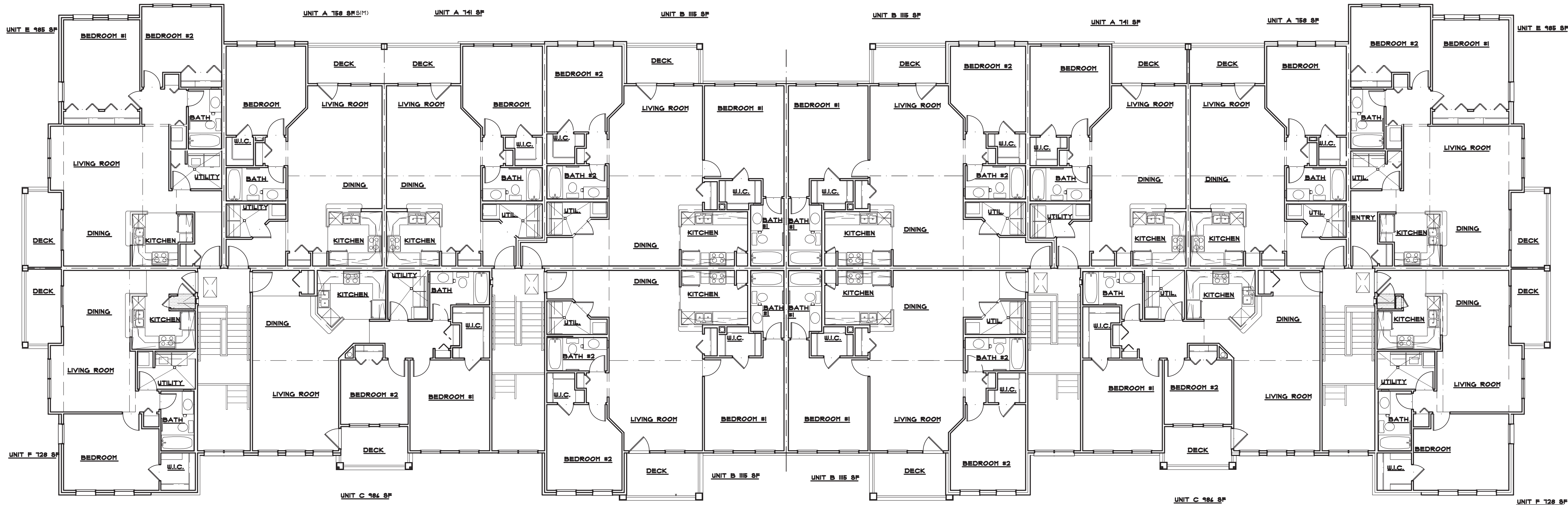
ROMEOVILLE, ILLINOIS

Alexander V. Bogaerts + Associates, P.C.
Architecture • Planning • Interior Design
2445 Franklin Road
Bloomfield Hills, MI 48302
248 • 334 • 5000



©2016

NOTE:
MATERIALS LISTED TO MATCH
APARTMENT BUILDINGS.



THIRD FLOOR BUILDING PLAN - BUILDING TYPE 'A'

36 UNIT BUILDING

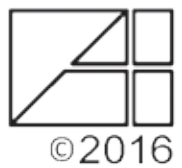
SCALE: 1/8" = 1'-0"

NOTE: FLOOR PLANS ARE CONCEPTUAL

PROPOSED VILLAGE PLACE APARTMENTS

ROMEOVILLE, ILLINOIS

Alexander V. Bogaerts + Associates, P.C.
Architecture • Planning • Interior Design
2445 Franklin Road
Bloomfield Hills, MI 48302
248 • 334 • 5000



©2016

NOTE:
MATERIALS LISTED TO MATCH
APARTMENT BUILDINGS.



FRONT ELEVATION - BUILDING TYPE 'A'

36 UNIT BUILDING

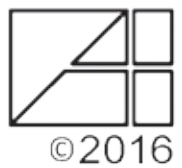
SCALE: 1/8" = 1'-0"

NOTE: BUILDING ELEVATIONS ARE CONCEPTUAL

PROPOSED VILLAGE PLACE APARTMENTS

ROMEDEVILLE, ILLINOIS

Alexander V. Bogaerts + Associates, P.C.
Architecture • Planning • Interior Design
2445 Franklin Road
Bloomfield Hills, MI 48302
248 • 334 • 5000



©2016



RIGHTSIDE ELEVATION - BUILDING TYPE ‘A’

LEFT SIDE OPPOSITE HAND - 36 UNIT BUILDING

SCALE: 1/8" = 1'-0"

NOTE: BUILDING ELEVATIONS ARE CONCEPTUAL

PROPOSED VILLAGE PLACE APARTMENTS

ROMEDEVILLE, ILLINOIS

NOTE:
MATERIALS LISTED TO MATCH
APARTMENT BUILDINGS.



REAR ELEVATION - BUILDING TYPE 'A'

36 UNIT BUILDING

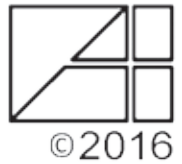
SCALE: 1/8" = 1'-0"

NOTE: BUILDING ELEVATIONS ARE CONCEPTUAL

PROPOSED VILLAGE PLACE APARTMENTS

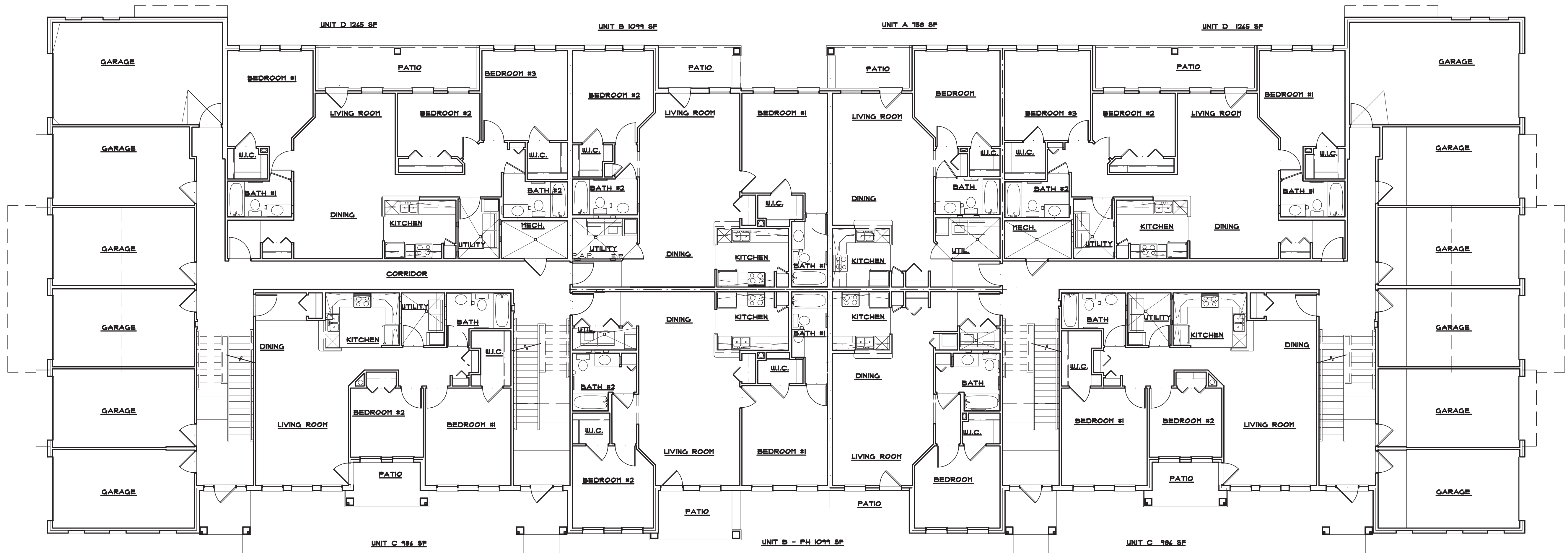
ROMEDEVILLE, ILLINOIS

Alexander V. Bogaerts + Associates, P.C.
Architecture • Planning • Interior Design
2445 Franklin Road
Bloomfield Hills, MI 48302
248 • 334 • 5000



©2016

NOTE:
MATERIALS LISTED TO MATCH
APARTMENT BUILDINGS.



FIRST FLOOR BUILDING PLAN - BUILDING TYPE 'E'

36 UNIT BUILDING

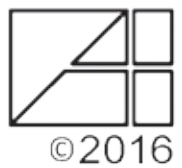
SCALE: 1/8" = 1'-0"

NOTE: FLOOR PLANS ARE CONCEPTUAL

PROPOSED VILLAGE PLACE APARTMENTS

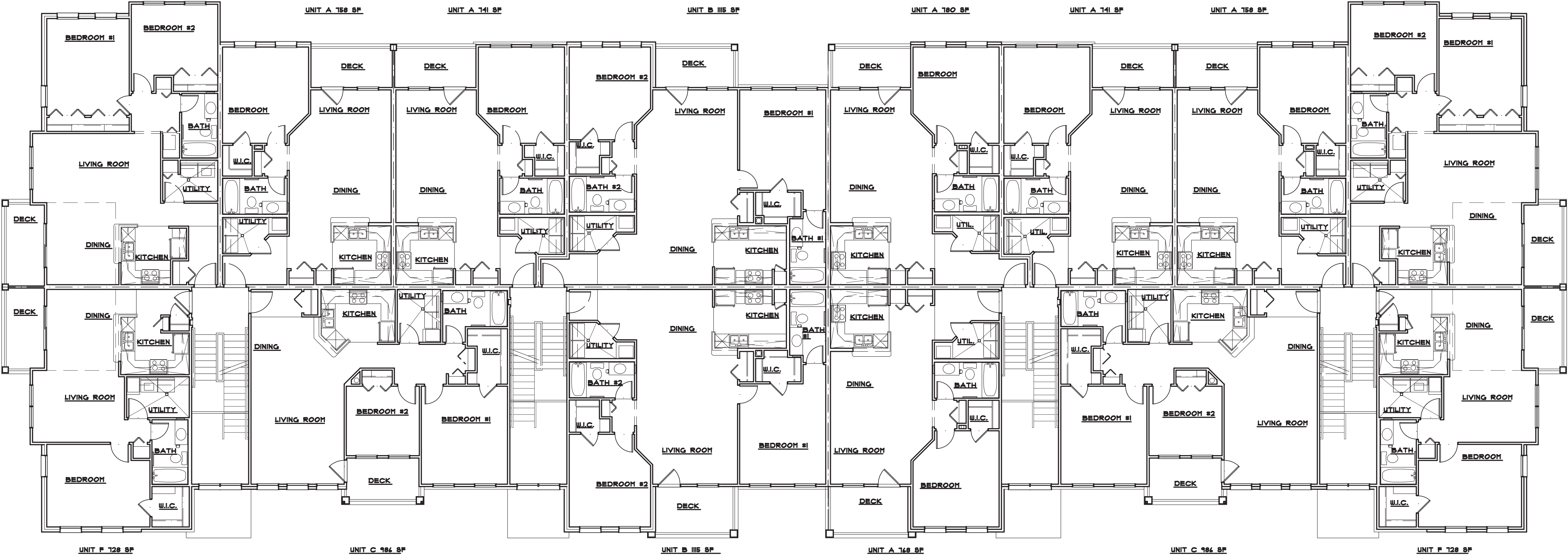
ROMEDEVILLE, ILLINOIS

Alexander V. Bogaerts + Associates, P.C.
Architecture • Planning • Interior Design
2445 Franklin Road
Bloomfield Hills, MI 48302
248 • 334 • 5000



©2016

NOTE:
MATERIALS LISTED TO MATCH
APARTMENT BUILDINGS.



SECOND FLOOR BUILDING PLAN - BUILDING TYPE ‘E’

36 UNIT BUILDING

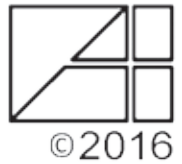
SCALE: 1/8" = 1'-0"

NOTE: FLOOR PLANS ARE CONCEPTUAL

PROPOSED VILLAGE PLACE APARTMENTS

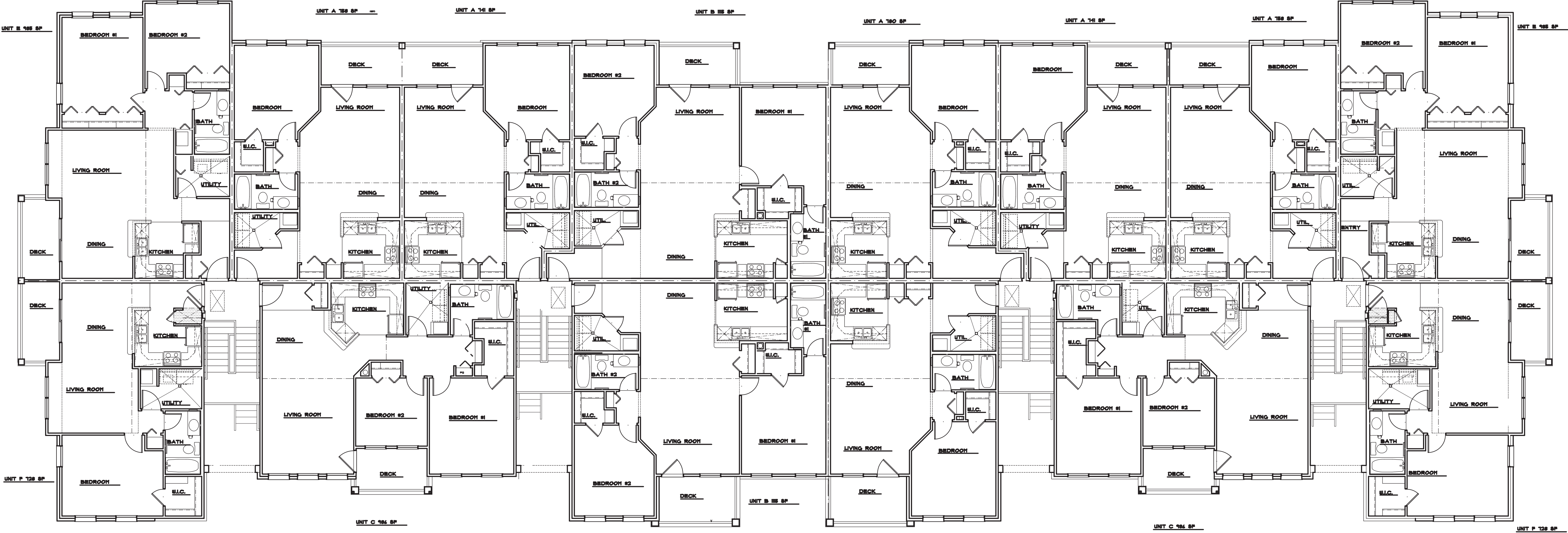
ROMEOVILLE, ILLINOIS

Alexander V. Bogaerts + Associates, P.C.
Architecture • Planning • Interior Design
2445 Franklin Road
Bloomfield Hills, MI 48302
248 • 334 • 5000



©2016

NOTE:
MATERIALS LISTED TO MATCH
APARTMENT BUILDINGS.



THIRD FLOOR BUILDING PLAN - BUILDING TYPE 'E'

36 UNIT BUILDING

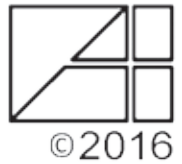
SCALE: 1/8" = 1'-0"

NOTE: FLOOR PLANS ARE CONCEPTUAL

PROPOSED VILLAGE PLACE APARTMENTS

ROMEOVILLE, ILLINOIS

Alexander V. Bogaerts + Associates, P.C.
Architecture • Planning • Interior Design
2445 Franklin Road
Bloomfield Hills, MI 48302
248 • 334 • 5000



NOTE:
MATERIALS LISTED TO MATCH
APARTMENT BUILDINGS.



FRONT ELEVATION - BUILDING TYPE ‘E’

36 UNIT BUILDING

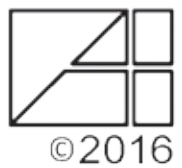
SCALE: 1/8" = 1'-0"

NOTE: BUILDING ELEVATIONS ARE CONCEPTUAL

PROPOSED VILLAGE PLACE APARTMENTS

ROMEDEVILLE, ILLINOIS

Alexander V. Bogaerts + Associates, P.C.
Architecture • Planning • Interior Design
2445 Franklin Road
Bloomfield Hills, MI 48302
248 • 334 • 5000



©2016

NOTE:
MATERIALS LISTED TO MATCH
APARTMENT BUILDINGS.



REAR ELEVATION - BUILDING TYPE 'E'

36 UNIT BUILDING

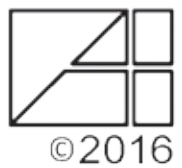
SCALE: 1/8" = 1'-0"

NOTE: BUILDING ELEVATIONS ARE CONCEPTUAL

PROPOSED VILLAGE PLACE APARTMENTS

ROMEDEVILLE, ILLINOIS

Alexander V. Bogaerts + Associates, P.C.
Architecture • Planning • Interior Design
2445 Franklin Road
Bloomfield Hills, MI 48302
248 • 334 • 5000



©2016

NOTE:
MATERIALS LISTED TO MATCH
APARTMENT BUILDINGS.



RIGHTSIDE ELEVATION - BUILDING TYPE ‘E’

LEFT SIDE OPPOSITE HAND - 36 UNIT BUILDING

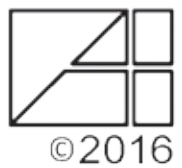
SCALE: 1/8" = 1'-0"

NOTE: BUILDING ELEVATIONS ARE CONCEPTUAL

PROPOSED VILLAGE PLACE APARTMENTS

ROMEDEVILLE, ILLINOIS

Alexander V. Bogaerts + Associates, P.C.
Architecture • Planning • Interior Design
2445 Franklin Road
Bloomfield Hills, MI 48302
248 • 334 • 5000

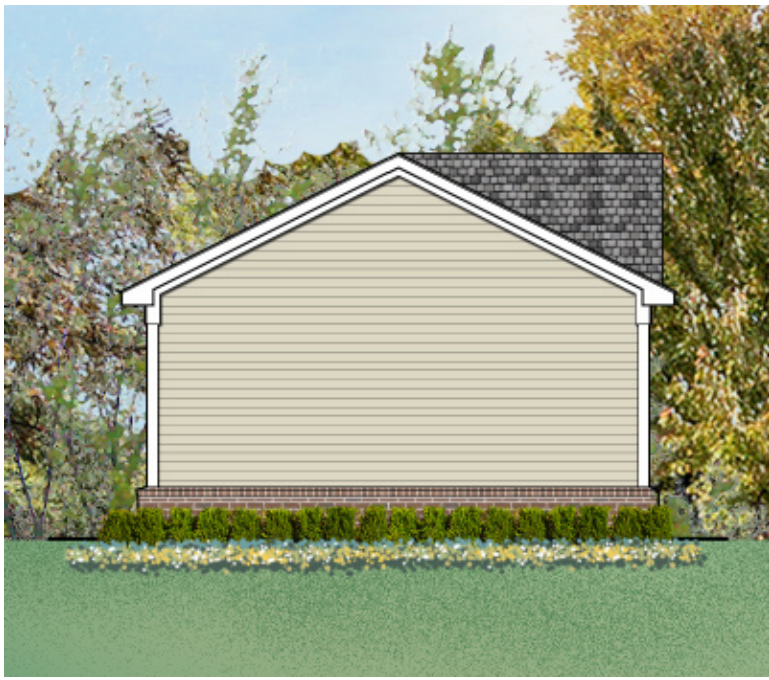


©2016

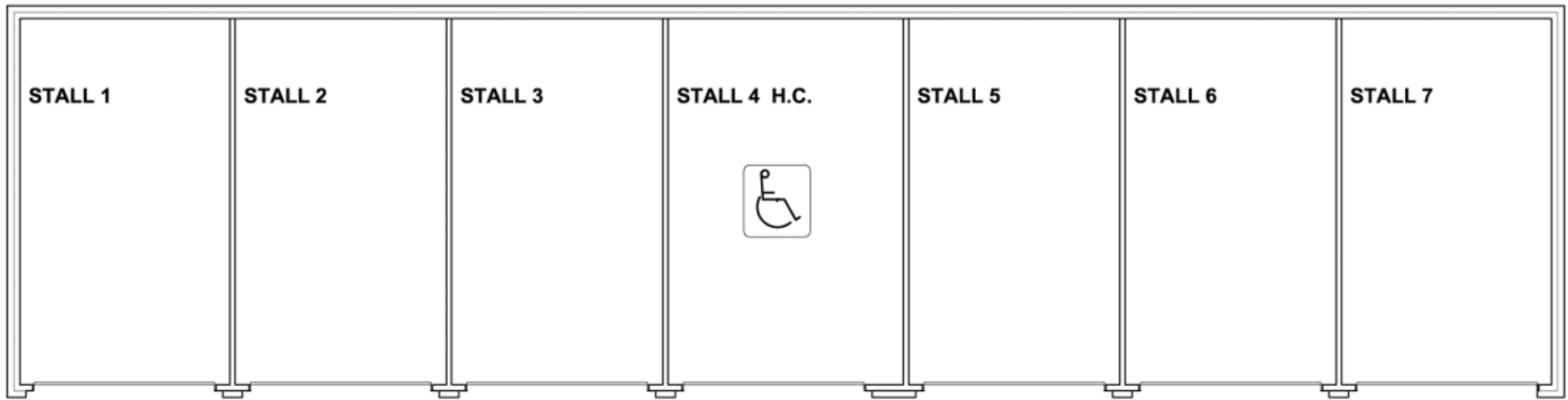
NOTE:
MATERIALS LISTED TO MATCH
APARTMENT BUILDINGS.



FRONT ELEVATION



LEFT SIDE ELEVATION



FLOOR PLAN



RIGHT SIDE ELEVATION



REAR ELEVATION

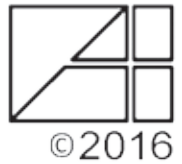
GARAGES

SCALE: 1/8" = 1'-0"

PROPOSED VILLAGE PLACE APARTMENTS

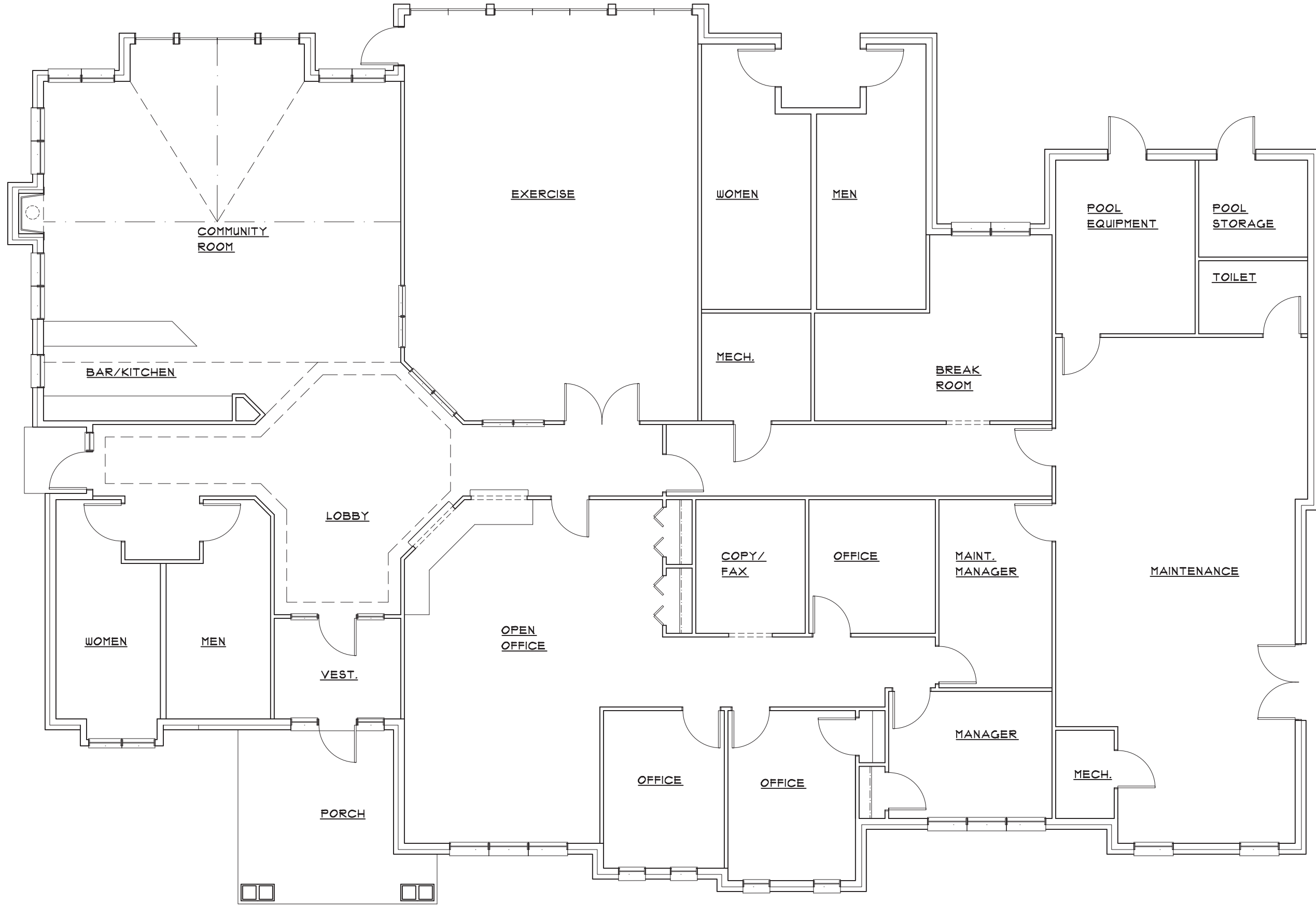
ROMEDEVILLE, ILLINOIS

Alexander V. Bogaerts + Associates, P.C.
Architecture • Planning • Interior Design
2445 Franklin Road
Bloomfield Hills, MI 48302
248 • 334 • 5000



©2016

NOTE:
MATERIALS LISTED TO MATCH
APARTMENT BUILDINGS.



FIRST FLOOR PLAN

COMMUNITY BUILDING

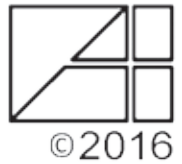
NOTE: FLOOR PLANS ARE CONCEPTUAL

SCALE: 1/8" = 1'-0"

PROPOSED VILLAGE PLACE APARTMENTS

ROMEDEVILLE, ILLINOIS

Alexander V. Bogaerts + Associates, P.C.
Architecture • Planning • Interior Design
2445 Franklin Road
Bloomfield Hills, MI 48302
248 • 334 • 5000



©2016

NOTE:
MATERIALS LISTED TO MATCH
APARTMENT BUILDINGS.

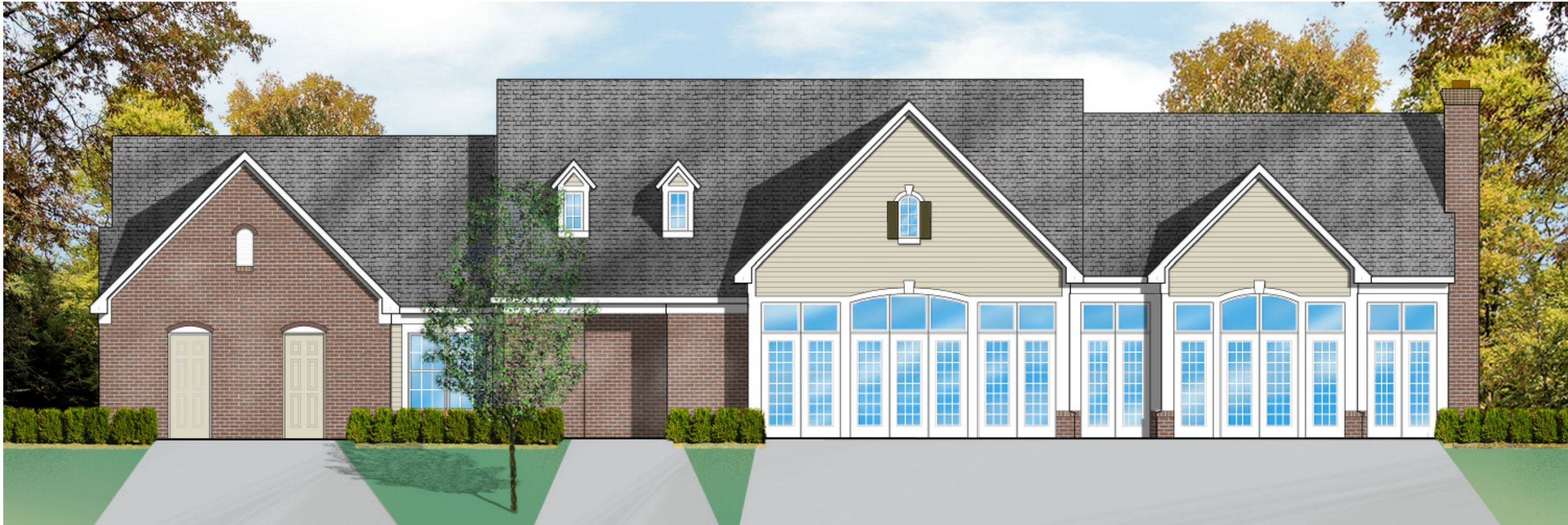


- HORIZ. SIDING
- 1x6 COMPOSITE TRIM
RAKE
- 1x4 COMPOSITE TRIM
- ASPHALT SHINGLES
- MDO PANEL
- 1x6 COMPOSITE
TRIM FASCIA W/ 1x10
COMPOSITE TRIM FRIEZE
- BRICK ARCH
- 14" W. PREFAB.
SHUTTERS (MATCH
WINDOW HT.)
- BRICK
- BRICK SILL

FRONT ELEVATION



LEFT ELEVATION



REAR ELEVATION



RIGHT ELEVATION

COMMUNITY BUILDING

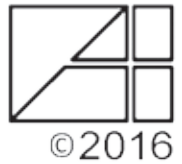
NOTE: BUILDING ELEVATIONS ARE CONCEPTUAL

SCALE: 1/8" = 1'-0"

PROPOSED VILLAGE PLACE APARTMENTS

ROMEIOVILLE, ILLINOIS

Alexander V. Bogaerts + Associates, P.C.
Architecture • Planning • Interior Design
2445 Franklin Road
Bloomfield Hills, MI 48302
248 • 334 • 5000



©2016

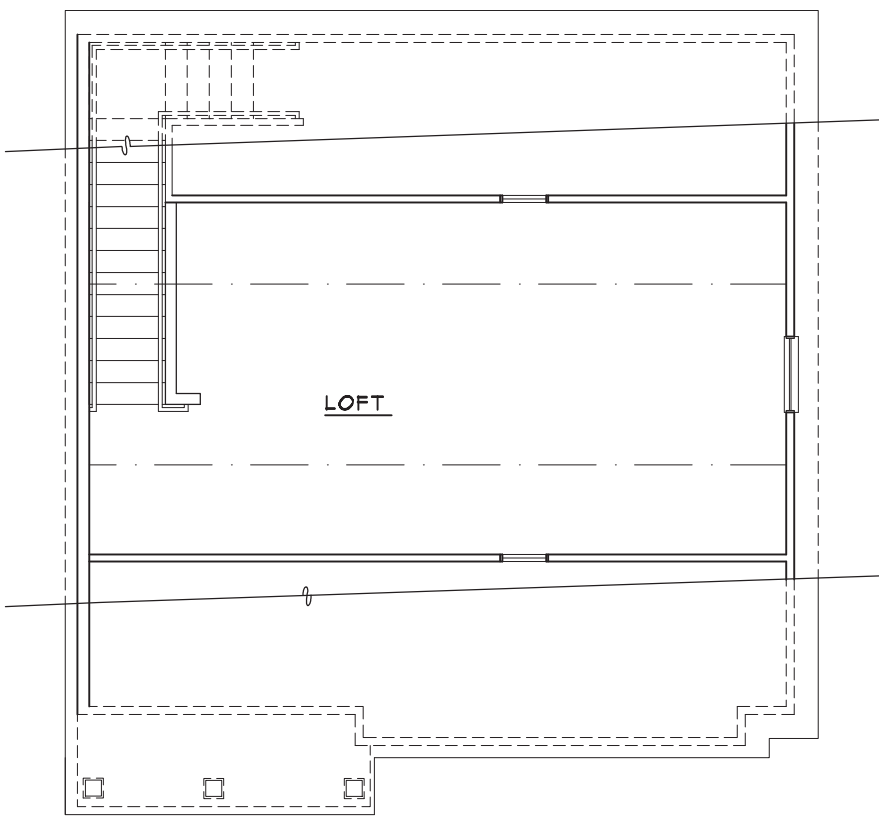
NOTE:
MATERIALS LISTED TO MATCH
APARTMENT BUILDINGS.



RIGHT SIDE ELEVATION



REAR ELEVATION



SECOND FLOOR PLAN

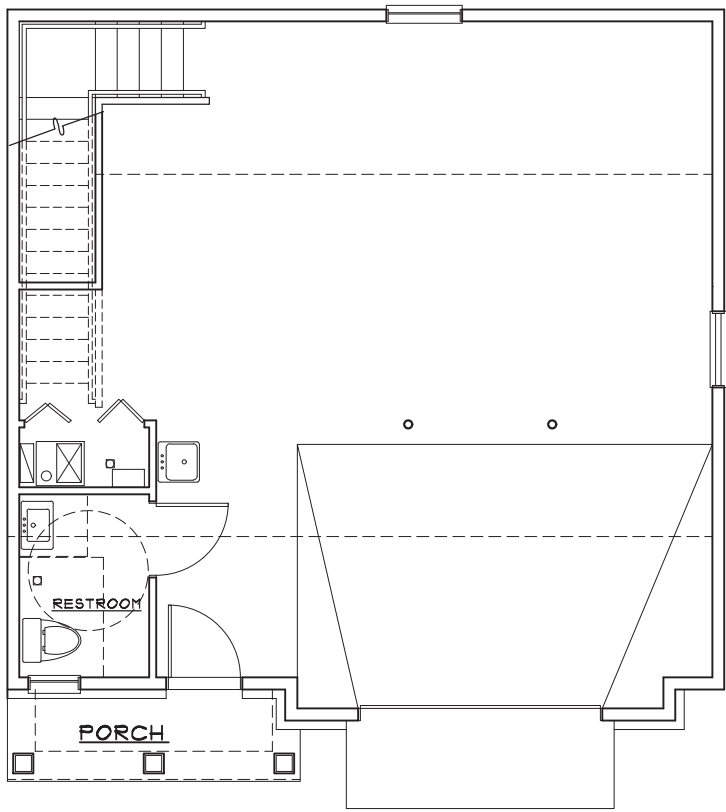


LEFT SIDE ELEVATION



FRONT ELEVATION

- ASPHALT SHINGLES
- 1x6 COMPOSITE TRIM
- RAKE
- 1x4 COMPOSITE TRIM
- HORIZ. SIDING
- 1x6 COMPOSITE TRIM FASCIA W/ 1x10
- COMPOSITE TRIM FRIEZE
- 1x6 COMPOSITE TRIM
- PREMANUFACTURED HEAD DETAIL
- BRICK SILL
- BRICK



FIRST FLOOR PLAN

MAINTENANCE BUILDING

NOTE: BUILDING ELEVATIONS ARE CONCEPTUAL

SCALE: 1/8" = 1'-0"

PROPOSED VILLAGE PLACE APARTMENTS

ROMEOVILLE, ILLINOIS

Alexander V. Bogaerts + Associates, P.C.
Architecture • Planning • Interior Design
2445 Franklin Road
Bloomfield Hills, MI 48302
248 • 334 • 5000



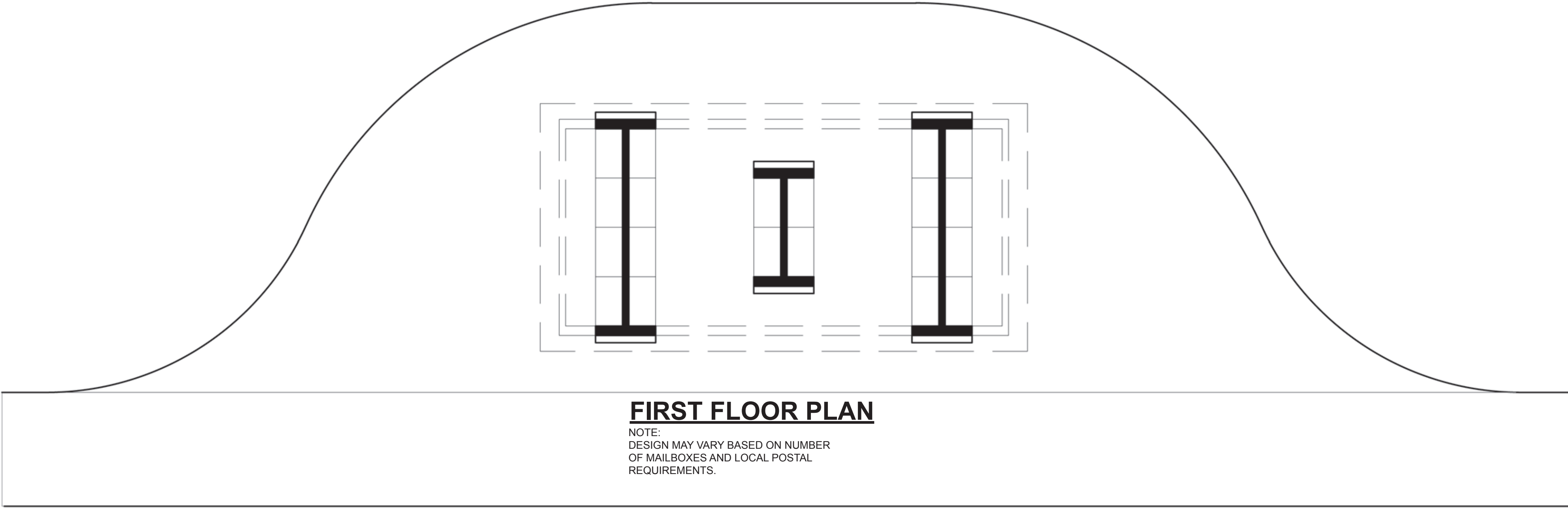
©2016

NOTE:
MATERIALS LISTED TO MATCH
APARTMENT BUILDINGS.



LEFT SIDE ELEVATION
RIGHT SIDE ELEVATION SIM.

FRONT ELEVATION
REAR ELEVATION SIM.



FIRST FLOOR PLAN

NOTE:
DESIGN MAY VARY BASED ON NUMBER
OF MAILBOXES AND LOCAL POSTAL
REQUIREMENTS.

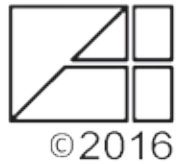
MAIL KIOSK

SCALE: 1/4" = 1'-0"

PROPOSED VILLAGE PLACE APARTMENTS

ROMEDEVILLE, ILLINOIS

Alexander V. Bogaerts + Associates, P.C.
Architecture • Planning • Interior Design
2445 Franklin Road
Bloomfield Hills, MI 48302
248 • 334 • 5000



©2016

NOTE:
MATERIALS LISTED TO MATCH
APARTMENT BUILDINGS.



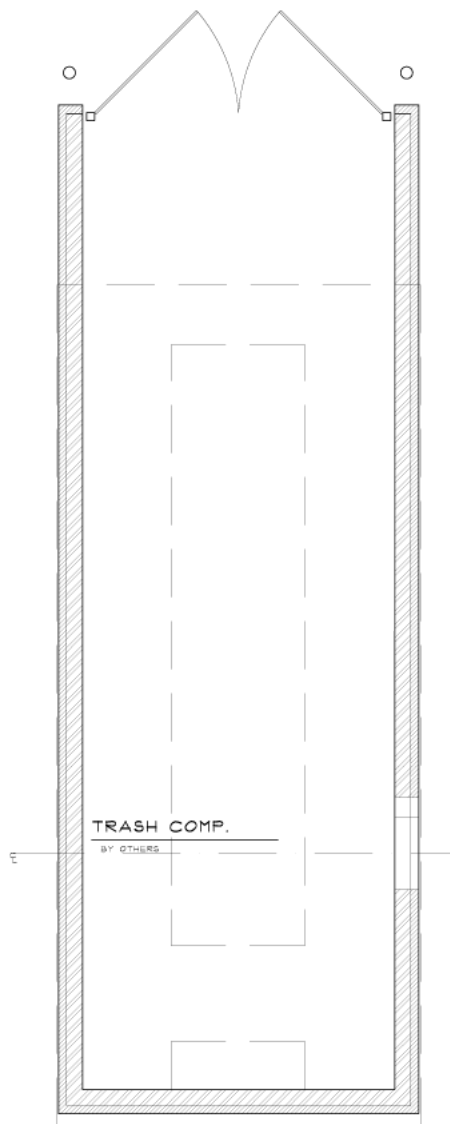
REAR ELEVATION

LEFT SIDE ELEVATION



FRONT ELEVATION

RIGHT SIDE ELEVATION



FLOOR PLAN

TRASH COMPACTOR

NOTE: BUILDING ELEVATIONS ARE CONCEPTUAL

SCALE: 1/8" = 1'-0"

PROPOSED VILLAGE PLACE APARTMENTS

ROMEDEVILLE, ILLINOIS

Alexander V. Bogaerts + Associates, P.C.
Architecture • Planning • Interior Design
2445 Franklin Road
Bloomfield Hills, MI 48302
248 • 334 • 5000

