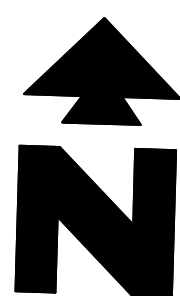


ZONING:  
PUD B-3



20 0 10 20  
( IN FEET )  
1 inch = 20 ft

1400SF-8/S-2015v2

SHEET NO.

1

EXISTING

- |                  |                                |
|------------------|--------------------------------|
| PROPERTY LINE    | POST LIGHT/GROUND LIGHT        |
| CENTER LINE      | STREET LIGHT                   |
| EASEMENT LINE    | TRAFFIC SIGNAL                 |
| BUILDING SETBACK | MAST ARM SIGNAL                |
| RECORD DATA      | HANDHOLE (electric/traffic)    |
|                  | GAS METER                      |
|                  | ELECTRIC METER                 |
|                  | PEDESTAL (teleco, elec, cable) |
|                  | UTILITY POLE                   |
|                  | TELEPHONE VAULT                |
|                  | GUARDRAIL                      |
|                  | GUY WIRE ANCHOR                |
|                  | CONTOUR LINE                   |
|                  | TREE LINE / HEDGE LINE         |
|                  | EDGE GRAVEL/STONE              |
|                  | FENCE LINE                     |
|                  | STORM SEWER                    |
|                  | SANITARY SEWER                 |
|                  | COMBO SEWER                    |
|                  | WATER SERVICE LINE             |
|                  | WATERMAIN                      |
|                  | OVERHEAD LINE                  |
|                  | FIBER OPTIC LINE               |
|                  | GAS LINE                       |
|                  | U.G. TELCO LINE                |
|                  | U.G. ELECTRIC LINE             |

PROPOSED

- |               |  |
|---------------|--|
| BOUNDARY LINE | CONCRETE INTEGRAL CURB                             |
| CF            | CONSTRUCTION FENCE (SEE DETAIL SHEETS)             |
| CFP           | CONSTRUCTION FENCE ON PAVEMENT (SEE DETAIL SHEETS) |
|               | BUILDING/CANOPY CONTROL POINT                      |

GENERAL SITE NOTES

- A. ALL DIMENSIONS SHOWN ARE TO THE FACE OF CURB UNLESS OTHERWISE NOTED.
- B. ALL CURB RETURN RADI SHALL BE 5', AS SHOWN TYPICAL ON THIS PLAN, UNLESS OTHERWISE NOTED.
- C. UNLESS OTHERWISE SHOWN, CALLED OUT OR SPECIFIED HEREON:  
ALL CURB ADJACENT TO CONCRETE PAVING SHALL BE INSTALLED PER DETAIL 1A.  
PAVEMENT SHALL BE INSTALLED IN ACCORDANCE WITH THE PAVING PLAN OVER THE ENTIRE PARKING LOT AREA AND ALL APPROACH DRIVES.  
SEE ASSOCIATED PLANS FOR CANOPY, COLUMN, PUMP ISLAND DETAILS AND LAYOUT.
- D. CONTRACTOR SHALL BEGIN CONSTRUCTION OF ANY LIGHT POLE BASES FOR RELOCATED LIGHT FIXTURES AND RELOCATION OF ELECTRICAL SYSTEM AS SOON AS DEMOLITION BEGINS. CONTRACTOR SHALL BE AWARE THAT INTERRUPTION OF POWER TO ANY LIGHT POLES OR SIGNS SHALL NOT EXCEED 24 HOURS.
- E. THE LOCATION OF THE CONSTRUCTION FENCE ON THE DRAWINGS IS FOR GRAPHICAL REPRESENTATION ONLY. THE CONTRACTOR IS TO ENSURE THAT THE CONSTRUCTION FENCE ENCOMPASSES THE ENTIRE WORK AREA.
- F. ALL SLOPES AND AREAS DISTURBED BY CONSTRUCTION SHALL BE GRADED SMOOTH AND FOUR INCHES OF TOPSOIL APPLIED. IF ADEQUATE TOPSOIL IS NOT AVAILABLE ON SITE, THE CONTRACTOR SHALL PROVIDE TOPSOIL, APPROVED BY THE OWNER, AS NEEDED. THE AREA SHALL THEN BE SEEDED/SODDED, FERTILIZED, MULCHED, WATERED AND MAINTAINED UNTIL HARDY GRASS GROWTH IS ESTABLISHED IN ALL AREAS. ANY AREAS DISTURBED FOR ANY REASON PRIOR TO FINAL ACCEPTANCE OF THE PROJECT SHALL BE CORRECTED BY THE CONTRACTOR AT NO ADDITIONAL COST TO THE OWNER.
- G. CONTRACTOR SHALL PURCHASE AND INSTALL A MAILBOX, AND SHALL COORDINATE LOCATION OF MAILBOX WITH MURPHY CONSTRUCTION MANAGER AND/OR ON-SITE REPRESENTATIVE AND LOCAL POSTMASTER.
- H. ALL PROPOSED PAVEMENT STRIPING OR MARKINGS SHALL FOLLOW THE SPECIFICATIONS FOR PAINT INCLUDED IN DETAIL 10A.

SITE NOTES

- 2F DRILL (2) 3/4" X 5/8" DIA. HOLES (1) EACH FOR OPEN POSITION & CLOSED POSITION OF GATES. TO BE USED ON BOTH SIDES OF GATE. SEE DUMPSTER DETAIL.
- 8B OVERHEAD CANOPY - (TYP.-PER CANOPY PLANS)
- 12D 4" WIDE PAINTED STRIPES. 2.0' O.C. @ 45° (SEE SIZE COLOR INDICATED AT SYMBOL).
- 12H 4" DOUBLE TRAFFIC YELLOW LANE STRIPE (SEE LENGTH INDICATED AT SYMBOL).
- 12M CONTRACTOR TO ENSURE THAT ANY LIGHT POLES OR HANDICAP PARKING SIGNS ARE AT LEAST 2' FROM BACK OF CURB TO PREVENT THE VEHICLES FROM STRIKING THESE ITEMS.
- 12P "NO PARKING FIRE LANE" SIGN
- 14J GC TO INSTALL (1) 4" PVC SLEEVE FOR IRRIGATION LINE. SEE UTILITY PLAN FOR INSTALLATION REQUIREMENTS.
- 14K GC TO INSTALL (2) 4" PVC SLEEVES FOR FUTURE USE. SEE UTILITY PLAN FOR INSTALLATION REQUIREMENTS.
- 16A MURPHY OIL FREE STANDING SIGN. PER APPROVED ELEVATION.
- 21A TAPER CURB TO MATCH EXISTING CURB. THREE (3) DRILLED AND GROUTED NO. 5 REINFORCING BARS OR EXPANSION TIE ANCHORS. 5/8" IN DIAMETER. SHALL BE USED TO TIE THE NEW CURB AND GUTTER TO THE EXISTING CURB AND GUTTER ON EACH SIDE.
- 21D EDGE OF CONCRETE SLAB. PER TANK/PIPING PLANS.
- 21E UNDERGROUND STORAGE TANKS (1) 25,000 GAL-REGULAR, (1) 8,000 GAL-PREMIUM, (1) 10,000 GAL-DIESEL, (1) 8,000 GAL-E-85.
- 21G AIR VACUUM UNIT WITH 4' X 7' CONCRETE SLAB
- 21K MURPHY EXPRESS ID SIGN. PER APPROVED ELEVATION.
- 21P 7' X 10' CONCRETE PAD FOR PROPANE TANKS.
- 21U 5' X 7' CONCRETE PAD FOR ICE UNIT. SEE NUMBER INDICATED AT SYMBOL.
- 21V CONCRETE PAD FOR VENT RISERS. PER TANK & PIPING PLANS.
- 51B LIMITS OF SAWCUT AND PAVEMENT REMOVAL.

SITE DETAILS - SEE DETAIL SHEETS

- 1B TYPE "B" CONCRETE CURB & GUTTER.
- 1P BARRIER CURB AROUND PARKING LOT PER ILLINOIS DOT STANDARD DETAIL.
- 2E DUMPSTER ENCLOSURE
- 3N CONCRETE SIDEWALK
- 3N WHEELCHAIR RAMP IN SIDEWALK (TYPICAL @ EACH DRIVEWAY CURB RETURN)
- 5A GUARD POST (SINGLE)
- 5B TRAFFIC SIGN IN BOLLARD
- 9S ACCESSIBLE / VAN ACCESSIBLE PARKING SIGN (TYP.)
- 9U ACCESSIBLE PARKING SYMBOL (SEE PAINT COLOR INDICATED AT SYMBOL).
- 10A TRAFFIC FLOW ARROW (TYP.)
- 10B STOP BAR (TYP.)
- 12G "STOP" SIGN
- 13A SITE LIGHT POLE. SEE PHOTOMETRIC PLANS FOR POLE BASE DETAIL, FIXTURE TYPE, AND MOUNTING DETAILS.

PARKING INFORMATION:  
MURPHY

DESCRIPTION	BUILDING AREA (S.F.)	REQUIRED:				
		RATIO	SPACES			
MURPHY OIL	1400	/1000 S.F.	REGULAR	ACCESSIBLE	VAN ACCESSIBLE	TOTAL
		5	6		1	7
STALL DIMENSIONS:		PROVIDED:				
90": 9.5' x 18'		RATIO	SPACES			
		/1000 S.F.	REGULAR	ACCESSIBLE	VAN ACCESSIBLE	TOTAL
		5	6		1	7

GreenbergFarrow

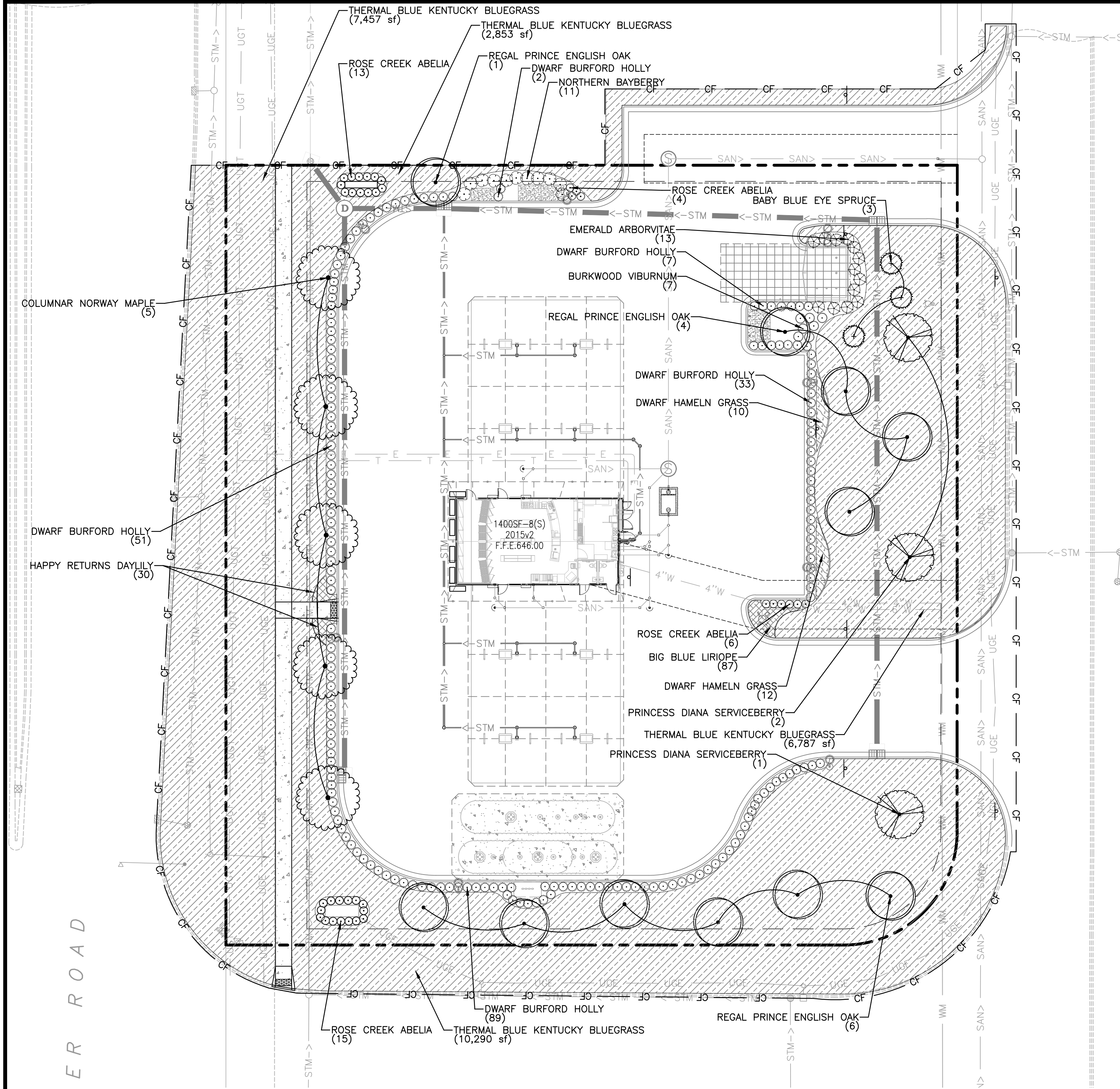
1430 W. PEACHTREE ST., NW SUITE 200  
ATLANTA, GA 30309  
TEL: (404) 401-3000  
FAX: (404) 401-3070  
DWG NAME: ROMEVILLE (WEBER), IL  
JOB NO.: 20160930

MURPHY OIL USA, INC.

MURPHY  
USA

200 PEACH STREET  
EL DORADO, AR 71730



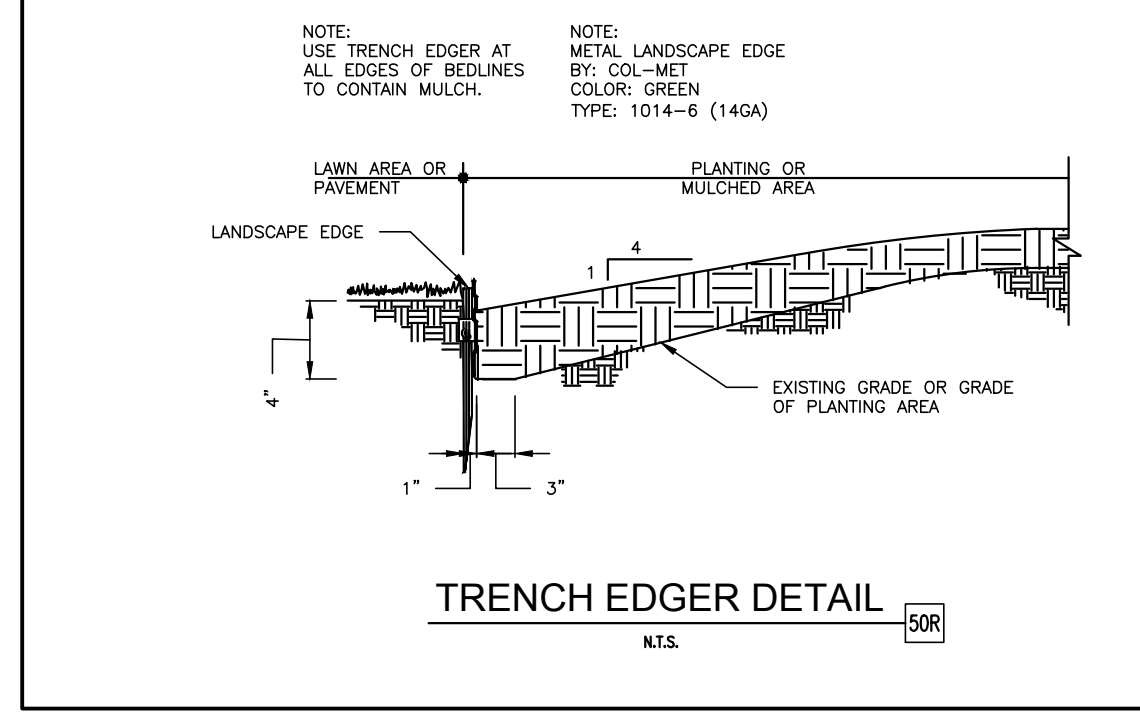
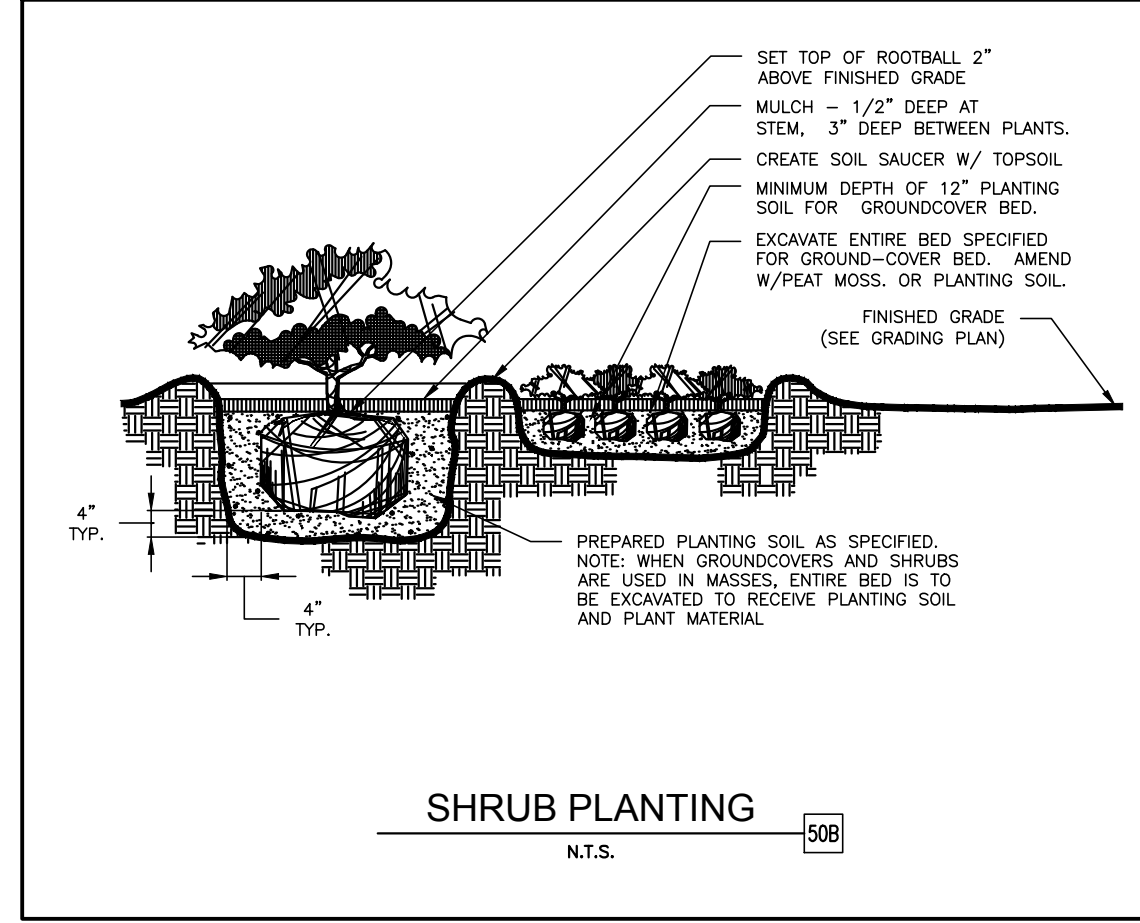
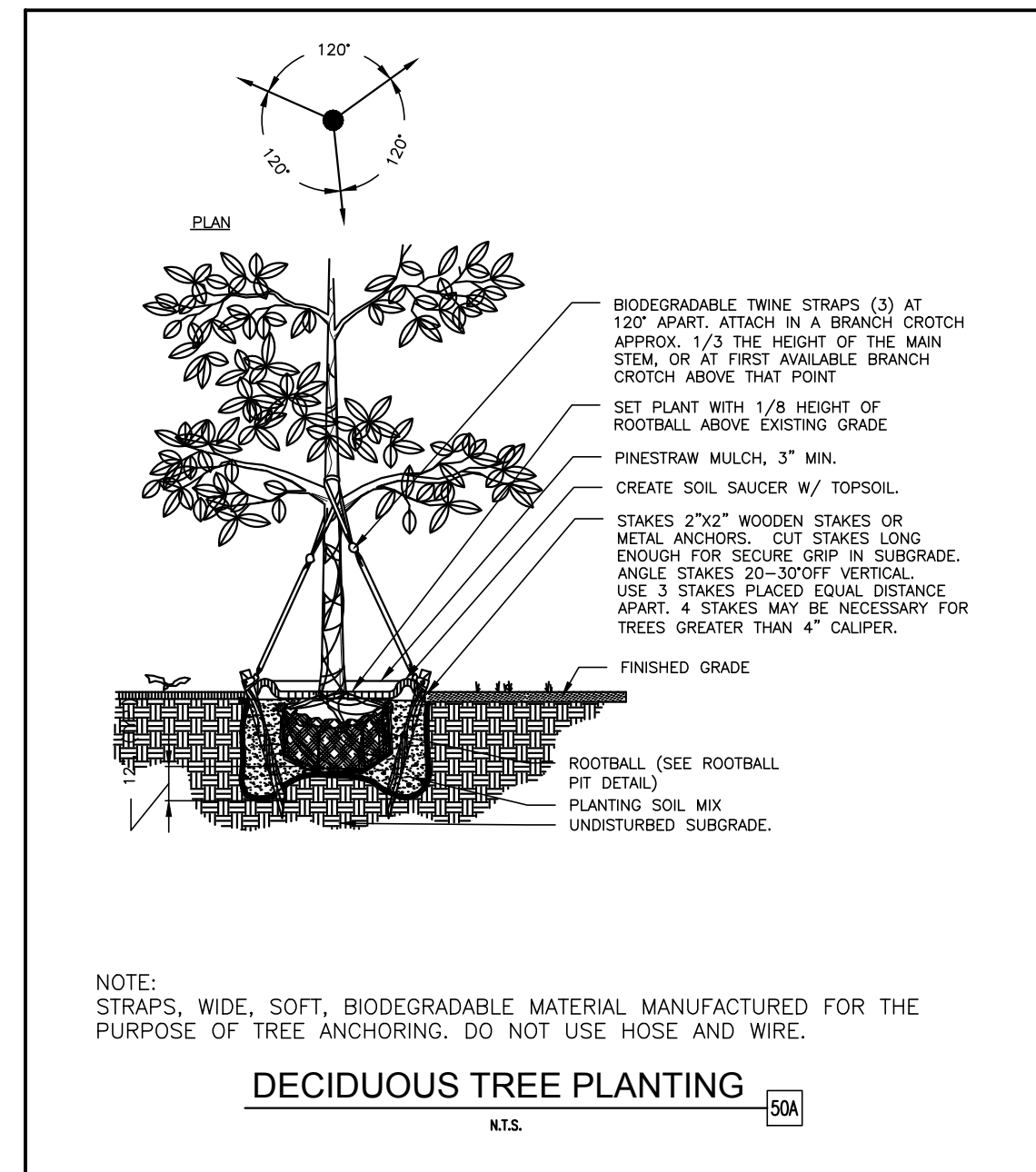


PLANT SCHEDULE

</

PLANT SCHEDULE

GROUND COVERS						
QTY	BOTANICAL NAME / COMMON NAME		CONT	REMARKS		
30	Hemerocallis x 'Happy Returns' / Happy Returns Daylily		1 gal	Full, Well Rooted in Pot		
87	Liriope muscari 'Big Blue' / Big Blue Liriope		4"pot	Full, Well Rooted in Pot		
22	Pennisetum alopecuroides 'Hameln' / Dwarf Hameln Grass		1 gal	Full, Dense, Well Rooted		
27,386 sf	Thermal Blue Hybrid Blend / Thermal Blue Kentucky Bluegrass		sod	Certified Weed Free		



**EXISTING**

PROPERTY LINE  
CENTER LINE  
EASEMENT LINE  
BUILDING SETBACK  
RECORD DATA

POST LIGHT/GROUND LIGHT  
AREA LIGHT  
STREET LIGHT  
TRAFFIC SIGNAL  
MAST ARM SIGNAL  
HANDHOLE (electric/traffic)  
GAS METER  
ELECTRIC METER  
PEDESTAL (telecom, elec, cable)  
UTILITY POLE  
TELEPHONE VAULT  
GUARDRAIL  
GUY WIRE ANCHOR  
CONTOUR LINE  
TREE LINE / HEDGE LINE  
EDGE GRAVEL/STONE  
FENCE LINE  
STORM SEWER  
SANITARY SEWER  
COMBO SEWER  
WATER SERVICE LINE  
WATERMAIN  
OVERHEAD LINE  
FIBER OPTIC LINE  
GAS LINE  
U.G. TELCO LINE  
U.G. ELECTRIC LINE

**PROPOSED**

BOUNDARY LINE  
TYPICAL PLANTING WITH QUANTITY AND KEY (SEE PLANT LIST)  
CONSTRUCTION FENCE (SEE CIVIL DETAILS)

**GENERAL LANDSCAPE NOTES**

A. LOCATE ALL UTILITIES AND SITE LIGHTING CONDUITS BEFORE LANDSCAPE CONSTRUCTION BEGINS.

B. NOTIFY LANDSCAPE ARCHITECT OR DESIGNATED REPRESENTATIVE OF ANY LAYOUT DISCREPANCIES PRIOR TO ANY PLANTING.

C. ALL LANDSCAPE MATERIALS SHALL BE IN COMPLIANCE WITH THE AMERICAN STANDARD FOR NURSERY STOCK. (ANSI-Z60.1-1986)

D. ALL SLOPES AND AREAS DISTURBED BY CONSTRUCTION SHALL BE GRADED SMOOTH AND FOUR INCHES OF TOPSOIL APPLIED. IF ADEQUATE TOPSOIL IS NOT AVAILABLE ON SITE, THE CONTRACTOR SHALL PROVIDE TOPSOIL APPROVED BY THE OWNER, AS NEEDED. THE AREA SHALL THEN BE SEEDED/SODDED, FERTILIZED, MULCHED, WATERED AND MAINTAINED UNTIL GRASS GROWTH IS ESTABLISHED IN ALL AREAS. ANY RELOCATED TREES SHALL BE MAINTAINED UNTIL SUCH POINT AS TREE IS RE-ESTABLISHED. ANY AREAS DISTURBED SHALL BE RE-SEEDDED PRIOR TO FINAL ACCEPTANCE OF THE PROJECT SHALL BE CORRECTED BY THE CONTRACTOR AT NO ADDITIONAL COST TO THE OWNER.

E. THE MURPHY STATION WILL NOT DROP MASTER DEVELOPMENT'S GREEN SPACE BELOW CITY'S REQUIREMENTS.

F. CONTRACTOR IS TO VERIFY LOCATION OF MASTER DEVELOPMENT IRRIGATION SYSTEM, VALVE BOXES, CONTROL BOXES, BACKFLOW PREVENTION DEVICES AND OTHER ITEMS WHICH ARE PART OF THE SYSTEM. IF DAMAGED THEY MUST BE REPAIRED AT CONTRACTOR'S COST.

G. CONTRACTOR IS TO PROTECT EXISTING LANDSCAPING/IRRIGATION MATERIALS.

H. ACCEPTANCE OF GRADING AND SEEDING SHALL BE BY LANDSCAPE ARCHITECT AND/OR OWNER. THE CONTRACTOR SHALL ASSUME MAINTENANCE RESPONSIBILITIES FOR A MINIMUM OF ONE (1) YEAR OR UNTIL SECOND CUTTING, WHICHEVER IS LONGER. MAINTENANCE SHALL INCLUDE WATERING, WEEDING, RESEEDING, AND OTHER OPERATIONS NECESSARY TO KEEP ALL LAWN AREAS IN A THRIVING CONDITIONS. UPON FINAL ACCEPTANCE, OWNER SHALL ASSUME ALL MAINTENANCE RESPONSIBILITIES. AFTER LAWN AREA HAVE GERMINATED, AREAS WHICH FAIL TO SHOW A UNIFORM STAND OF GRASS FOR ANY REASON WHATSOEVER SHALL BE RE-SEEDDED REPEATEDLY UNTIL ALL AREAS ARE COVERED WITH A SATISFACTORY STAND OF GRASS. MINIMUM ACCEPTANCE OF SEEDED LAWN AREAS MAY INCLUDE SCATTERED BARE SPOTS, NONE OF WHICH ARE LARGER THAN 1 SQUARE FOOT, AND WHEN COMBINED DO NOT EXCEED 2% OF TOTAL SEEDED LAWN AREA.

J. THE LANDSCAPE CONTRACTOR SHALL VERIFY ALL QUANTITIES SHOWN ON THESE PLANS, BEFORE PRICING THE WORK.

K. QUANTITIES ON THE PLANT SCHEDULE ARE PROVIDED FOR CONVENIENCE. THE CONTRACTOR SHALL BE RESPONSIBLE FOR HIS/HER OWN QUANTITY CALCULATIONS. IN THE EVENT OF A DISCREPANCY BETWEEN THE LANDSCAPE PLANS AND THE PLANT SCHEDULE, THE LANDSCAPE PLAN WILL TAKE PRECEDENCE. THE CONTRACTOR SHALL INFORM THE LANDSCAPE ARCHITECT IMMEDIATELY UPON DISCOVERING ANY QUANTITY DISCREPANCIES.

**GreenbergFarrow**

1430 W. PEACHTREE ST., NW SUITE 200  
ATLANTA, GA 30369  
TEL: (404) 524-8800  
FAX: (404) 401-9670  
DWG NAME: ROMEVILLE (WEBER), IL  
JOB NO.: 20160930

**MURPHY OIL USA, INC.**

200 PEACH STREET  
EL DORADO, AR 71730

**MURPHY USA**

**LANDSCAPE PLAN**

**MURPHY EXPRESS**

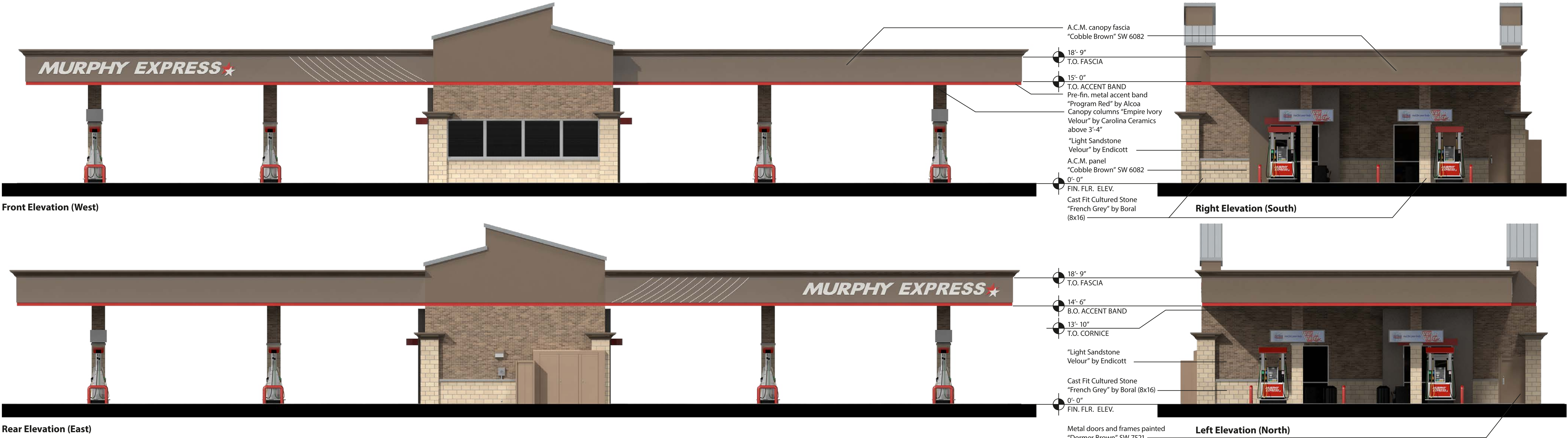
**495 S WEBER ROAD**

**ROMEIOVILLE**

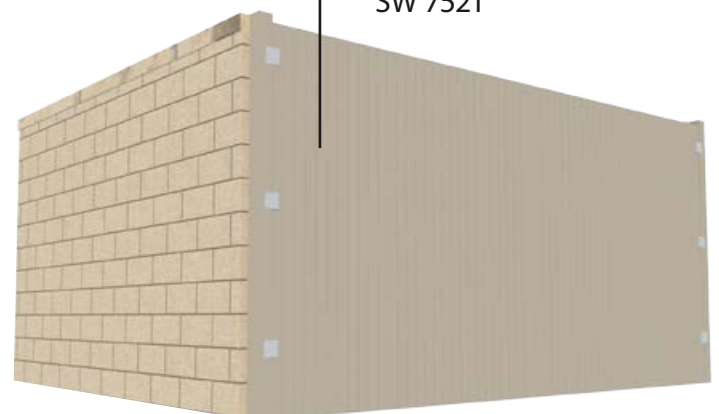
**ILLINOIS**

**SHEET NO. C-10**

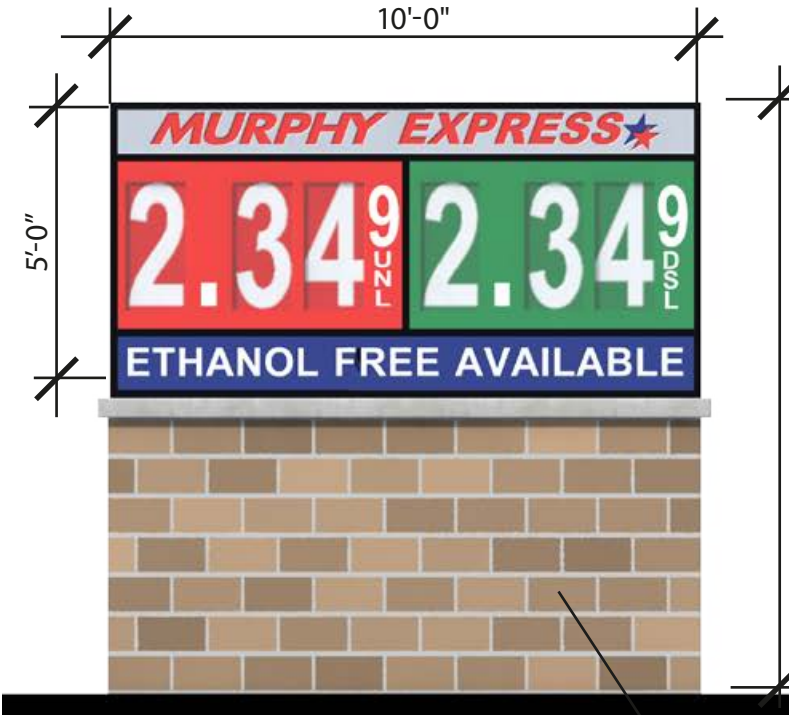




8'-0" Cast Fit Cultured Stone "French Grey" by Boral (8x16) with Fibertech composite fence gates painted "Dormer Brown" SW 7521



Trash Enclosure



Monument Sign (Not to scale)

Cast Fit Cultured Stone "French Grey" by Boral (8x16) with 4" h. concrete cap

Sign	Qty.	Height	Width	Area	Total S.F.
Murphy USA logo sign (canopy)	2	Graphic Area		64.21	128.42
Monument Sign	1	60.00"	120.00"	50.00	50.00
Total Building Signage					178.42

B | R | R

**MURPHY EXPRESS**

Romeoville, IL  
February 15, 2017