

VALLEY VIEW COMMUNITY UNIT
SCHOOL DISTRICT 365-U



Wight & Company
wightco.com
2500 North Frontage Road
Darien, IL 60551
P 630.969.7000
F 630.969.7979

Valley View
Community Unit
School District 365-U
755 Dalhart Avenue
Romeoville, IL 60446

REV	DESCRIPTION	DATE
VALLEY VIEW SCHOOL DISTRICT PROPOSED ADMIN PARKING LOT		

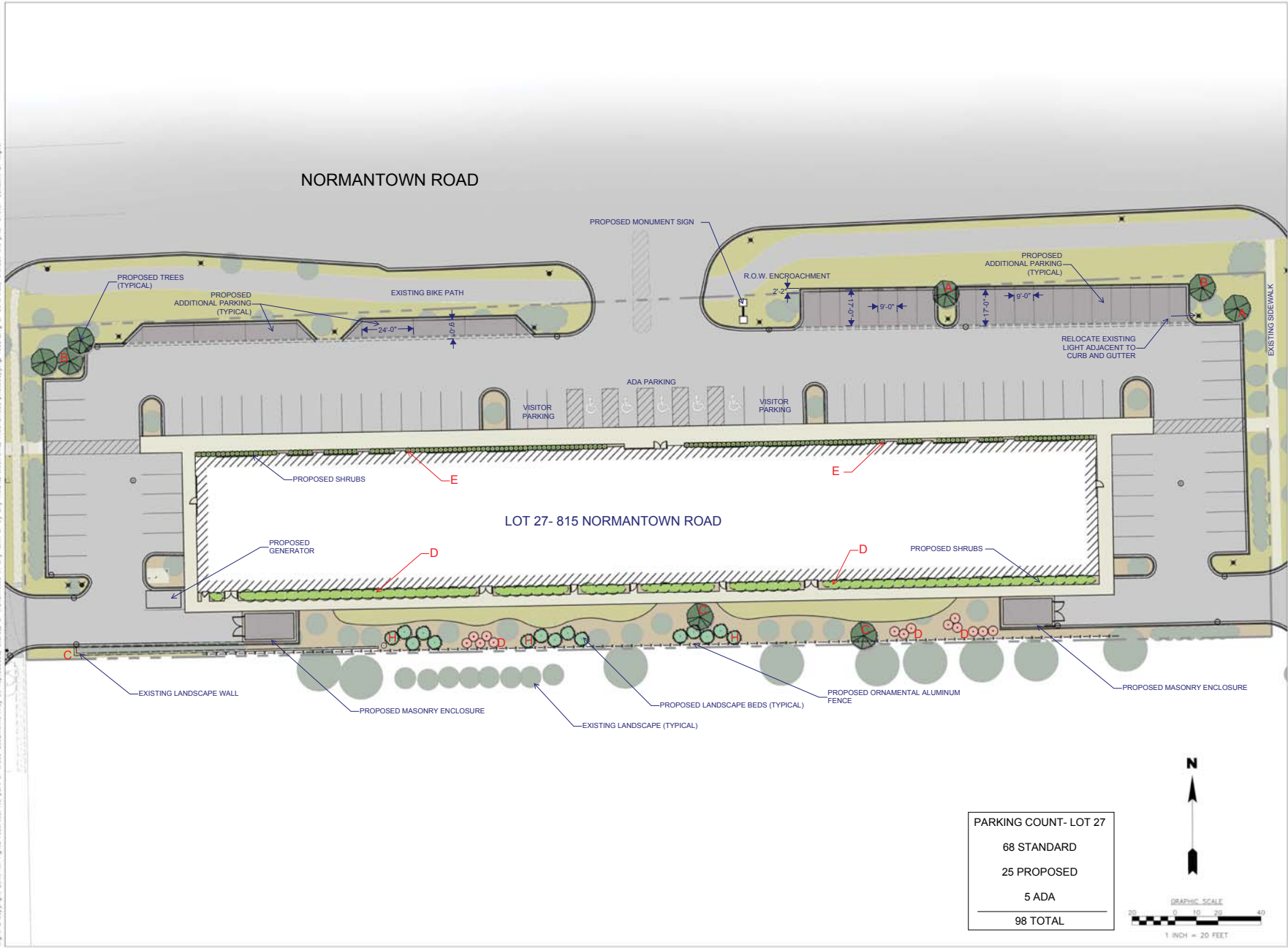
801 NORMANTOWN ROAD
ROMEDEVILLE, IL 60446

COMBINED LOTS
SITE PLAN

Project Number:
01-4840-113
Drawn By:

Sheet:

S:\Darien\ValleyView\SD_365\01-4840-113_VVSD - Admin Offices\DWG\BASE\01-4840-113 PR-DEO 27 and 28.dwg (a11n Aug 15, 2016 3:17:30 pm
Wight & Company 2016. All rights reserved. No part of these documents may be reproduced, stored, or transmitted in any form or by any means, electronic, mechanical, photocopying, recording or otherwise, without the prior written consent of Wight.



VALLEY VIEW COMMUNITY UNIT
SCHOOL DISTRICT 365-U

Wight

Wight & Company
wightco.com
2500 North Frontage Road
Darien, IL 60561
P 630.969.7000
F 630.969.7979

Valley View
Community Unit
School District 365-U
755 Dalhart Avenue
Romeoville, IL 60446

REV	DESCRIPTION	DATE
-----	-------------	------

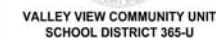
VALLEY VIEW
SCHOOL DISTRICT
PROPOSED ADMIN
PARKING LOT

801 NORMANTOWN ROAD
ROMEDEVILLE, IL 60446

LOT 27
SITE/ LANDSCAPE
PLAN

Project Number:
D-4840-23
Drawn By:

Sheet:



Wight

Wight & Company
wightco.com
2500 North Frontage Road
Darien, IL 60561
P 630.969.7000
F 630.969.7979

**Valley View
Community Unit
School District 365-U
755 Dalhart Avenue
Romeoville, IL 60446**

REV	DESCRIPTION	DATE
-----	-------------	------

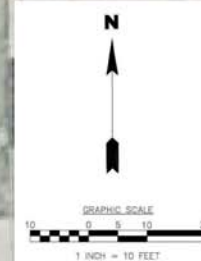
**VALLEY VIEW
SCHOOL DISTRICT
PROPOSED ADMIN
PARKING LOT**

801 NORMANTOWN ROAD
ROMEOVILLE, IL 60446

LOT 28
SITE/ LANDSCAPE
PLAN

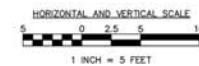
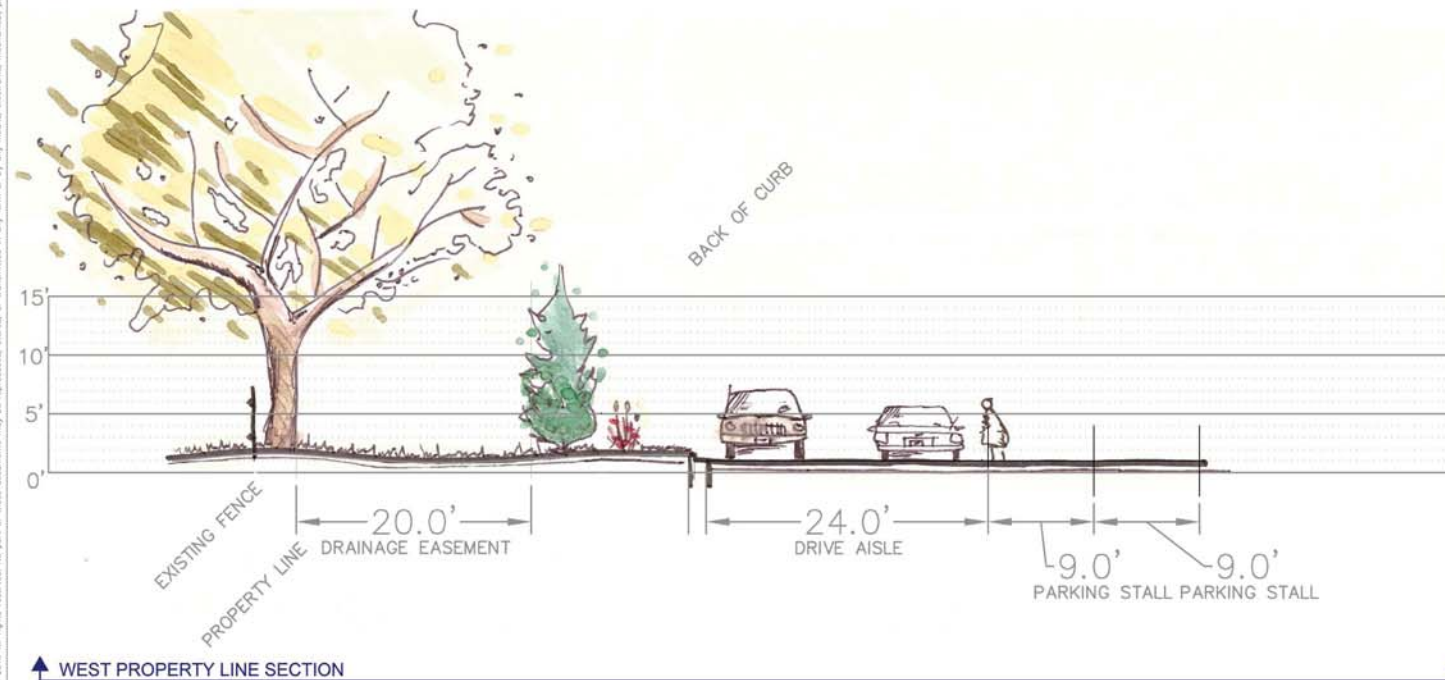
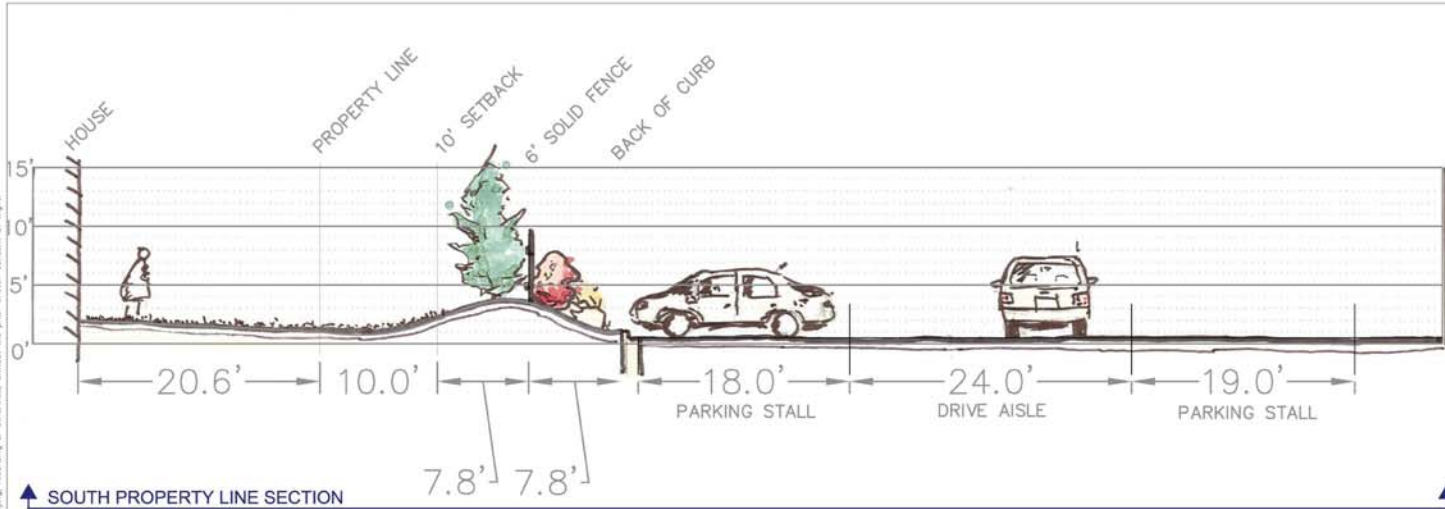
Project Number:
01-4840-13
Drawn By:

Sheet:



S:\Darien\ValleyView 50_365\01-4840-113_VVSD - Admin Offices\DWG\01.100 LANDSCAPE PLAN.dwg slottin Aug 04, 2016 7:31:56 am

Wight & Company 2016. All rights reserved. No part of these documents may be reproduced, stored, or transmitted in any form or by any means, electronic, mechanical, photocopying, recording or otherwise, without the prior written consent of Wight.



VALLEY VIEW COMMUNITY UNIT
SCHOOL DISTRICT 365-U

Wight

Wight & Company
wightco.com
2500 North Frontage Road
Darien, IL 60561
P 630.969.7000
F 630.969.7979

Valley View
Community Unit
School District 365-U
755 Dalhart Avenue
Romeoville, IL 60446

ISSUE FOR LEASE AGREEMENT 09-04-16
REV DESCRIPTION DATE

VALLEY VIEW
SCHOOL DISTRICT
PROPOSED ADMIN
PARKING LOT

801 NORMANTOWN ROAD
ROMEIOVILLE, IL 60446

LOT 28
SECTIONS

Project Number:
01-4840-113

Drawn By:

Sheet:



A. PRINCETON SENTRY GINKGO
H- 45' W- 25'



B. ARMSTRONG MAPLE
H- 50' W- 20'



C. JANE MAGNOLIA
H- 12' W- 10'



D. DWARF BURNING BUSH
H- 8' W- 8'



E. GLENCOE BOXWOOD
H- 4' W- 4'



F. SHENANDOAH SWITCHGRASS
H- 3' W- 3'



G. FEATHER REED GRASS
H- 3' W- 3'



H. IOWA JUNIPER
H- 10-15' W- 6-8'



VALLEY VIEW COMMUNITY UNIT
SCHOOL DISTRICT 365-U

Wight

Wight & Company
wightco.com
2500 North Frontage Road
Darien, IL 60561
P 630.969.7000
F 630.969.7979

Valley View
Community Unit
School District 365-U
755 Dalhart Avenue
Romeoville, IL 60446

REV	DESCRIPTION	DATE
-----	-------------	------

VALLEY VIEW
SCHOOL DISTRICT
PROPOSED ADMIN
PARKING LOT

801 NORMANTOWN ROAD
ROMEDEVILLE, IL 60446

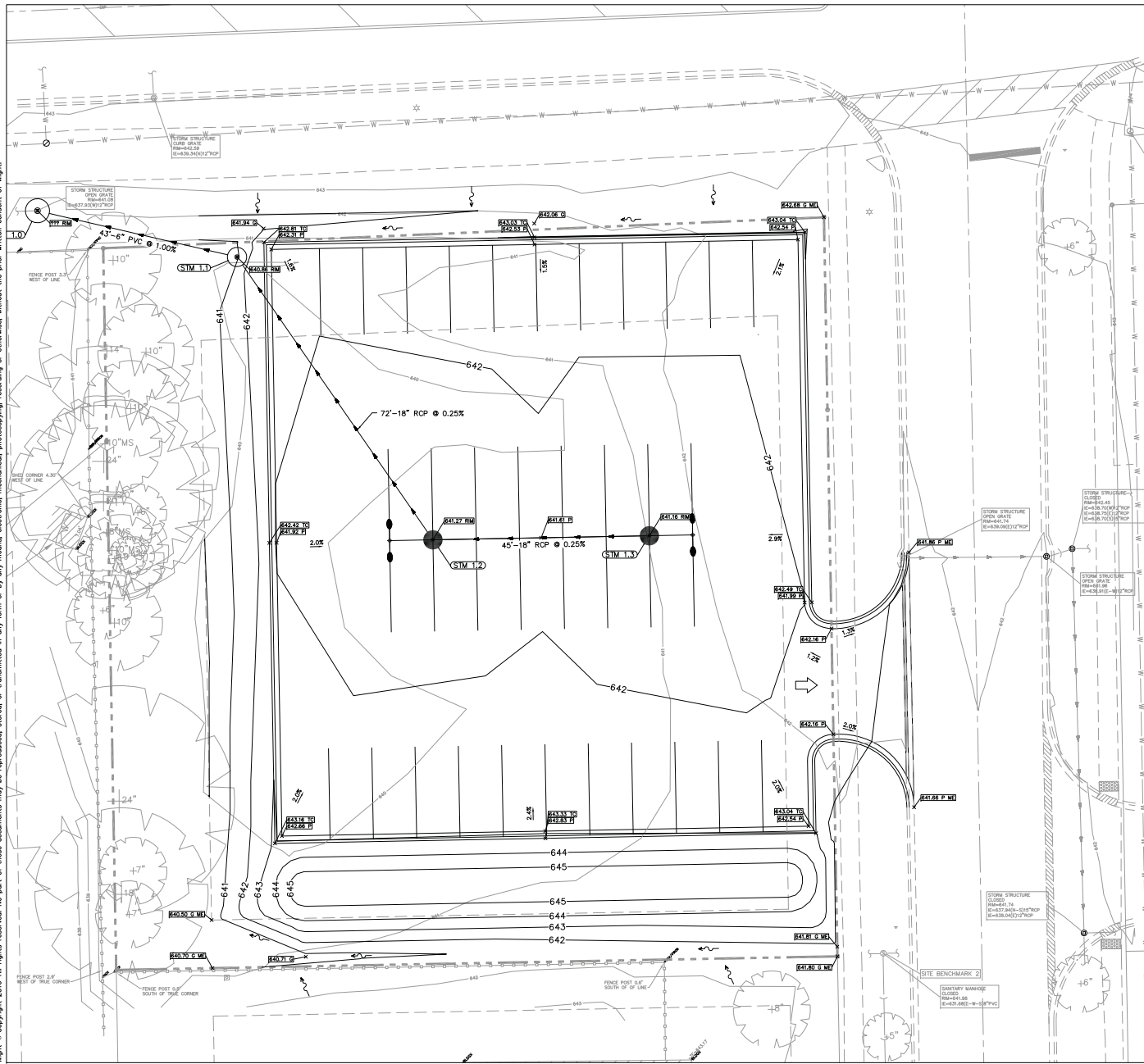
LOT 27/ 28
LANDSCAPE
ELEMENTS

Project Number:
21-4840-113

Drawn By:

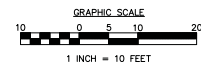
Sheet:

S:\Darien\ValleyView_SD_365\01-4840-113_VVSD - Admin Offices\DWG\CD\CD3.00 GRADING AND UTILITY PLAN.dwg devons Aug 16, 2016 7:42:14 am
Wight & Company 2016 All rights reserved. No part of these documents may be reproduced, stored, or transmitted in any form or by any means, electronic, mechanical, photocopying, recording or otherwise, without the prior written consent of Wight.



LEGEND

ME	MATCH EXISTING ELEVATION
HP	HIGH POINT
117.75	FLOW LINE ELEVATION
117.75	TOP OF PAVEMENT ELEVATION
117.75	TOP OF CURB ELEVATION
117.75	GROUND ELEVATION
117.75	TOP OF SIDEWALK ELEVATION
117.75	DEPRESSED CURB ELEVATION
117.75	RIM ELEVATION
117.75	TOP OF PAD ELEVATION
117.75	EXISTING CONTOUR LINE
745	PROPOSED CONTOUR LINE
2.0%	SLOPE/FLOW DIRECTION
→	OVERLAND FLOW ROUTE
●	CATCH BASIN
○	MANHOLE
◊	INLET PROTECTION



VALLEY VIEW COMMUNITY UNIT
SCHOOL DISTRICT 365-U

Wight

Wight & Company
wightco.com
2500 North Frontage Road
Darien, IL 60541
P 630.969.7000
F 630.969.7979

Valley View
Community Unit
School District 365-U
755 Dalhart Avenue
Romeoville, IL 60446

REV	DESCRIPTION	DATE
-----	-------------	------

VALLEY VIEW
SCHOOL DISTRICT
PROPOSED ADMIN
PARKING LOT

801 NORMANTOWN ROAD
ROMEIOVILLE, IL 60446

LOT 28 PRELIMINARY
GRADING AND
UTILITY PLAN

Project Number:
01-4840-113
Drawn By:
Sheet: