

Village of Romeoville

Project Compliance Report

Date: June 8, 2022

Description/Title: FRED-Romeoville HC, LLC (Seasons of Romeoville)

Type of Review: Plat of Easement

Summary:

FRED-Romeoville HC, LLC has completed the Seasons of Romeoville project next to Farm & Fleet.

The following chart describes the zoning and land uses surrounding the property:

	<i>Zoning</i>	<i>Land Use</i>	<i>User</i>
<i>Site</i>	R-7, General Residential	Residential	Seasons
<i>North</i>	B-3, Highway Regional Commercial	Commercial	Blain's Farm & Fleet
<i>South</i>	B-3, Highway Regional Commercial	Commercial	Mercedes
<i>East</i>	P-1, Public/Conservation P-B, Planned Business	Gas Line Industrial	Kinder Morgan Prologis
<i>West</i>	B-3, Highway Regional Commercial	Commercial	Wal-Mart & Outlots

This plat of easement will dedicate the necessary utility and drainage easements for the property to the Village.

Method of Investigation:

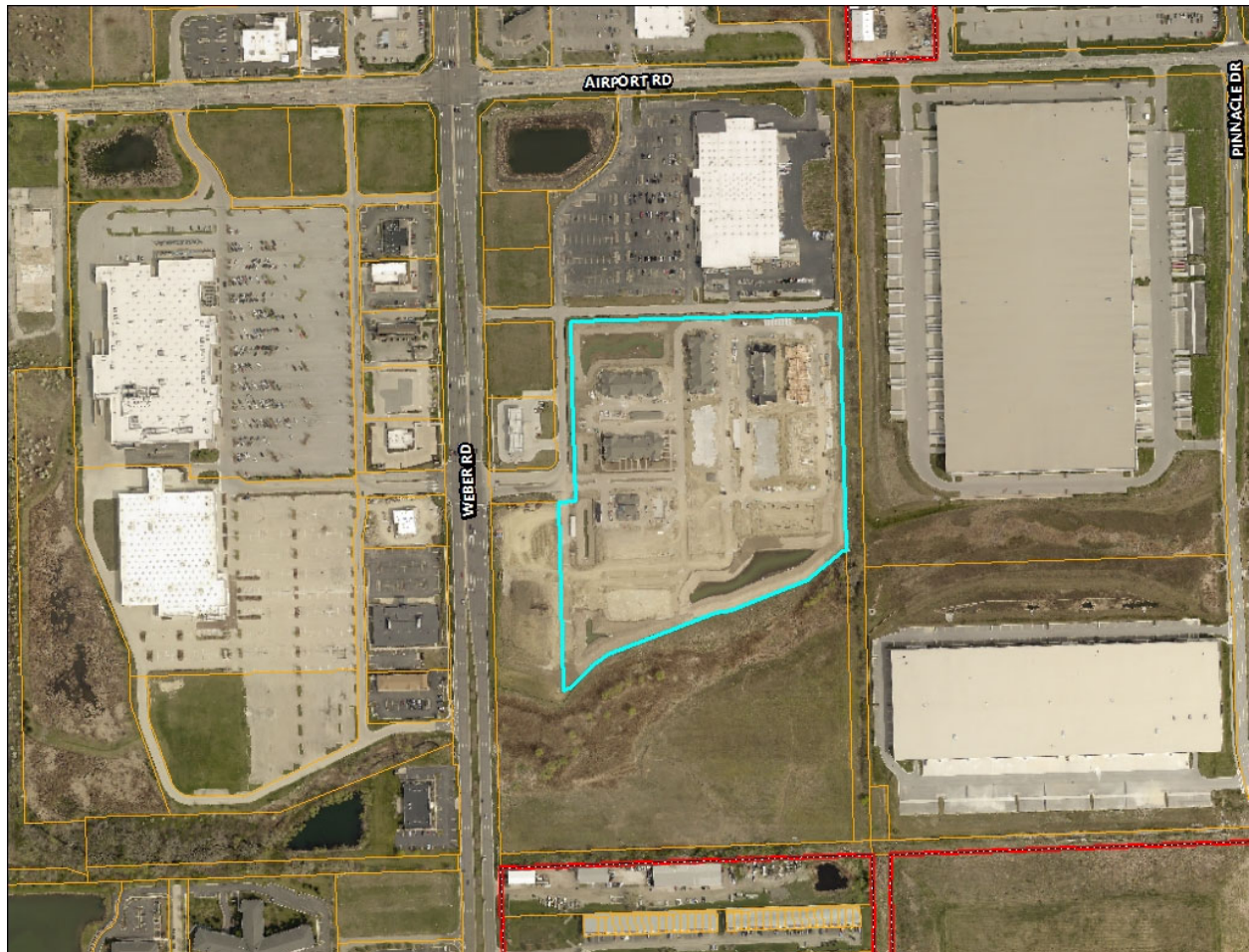
The Development Review Committee has reviewed the proposal.

Recommendation:

The Development Review Committee recommends approval contingent on compliance with all staff comments.

Presenter: ND

Aerial:



Presenter: ND