

SURVEY PREPARED FOR

FRED-ROMEIOVILLE HC, LLC, A
WISCONSIN LIMITED LIABILITY COMPANY
789 NORTH WATER STREET, SUITE 200
MILWAUKEE, WISCONSIN 53202

SUBMITTED BY/RETURN TO:

FRED-ROMEIOVILLE HC, LLC, A
WISCONSIN LIMITED LIABILITY COMPANY
789 NORTH WATER STREET, SUITE 200
MILWAUKEE, WISCONSIN 53202

PLAT OF EASEMENT GRANT TO THE VILLAGE OF ROMEOVILLE FOR VILLAGE UTILITY EASEMENTS

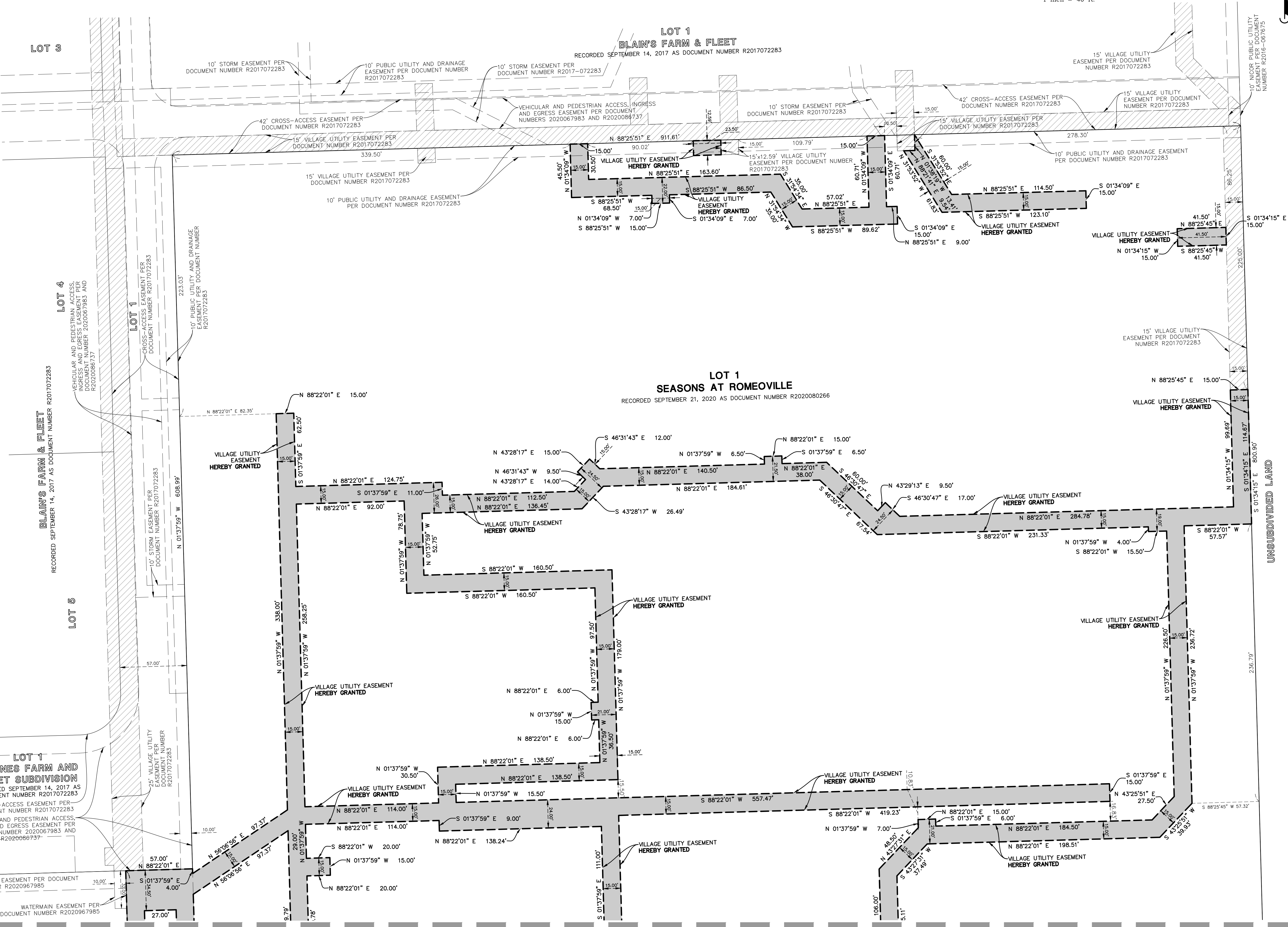
PART OF LOT 1 IN THE FINAL PLAT OF SEASONS AT ROMEOVILLE SUBDIVISION, BEING A SUBDIVISION OF THAT PART OF THE WEST HALF OF THE NORTHWEST QUARTER OF SECTION 17, TOWNSHIP 36 NORTH, RANGE 10 EAST OF THE THIRD PRINCIPAL MERIDIAN, IN WILL COUNTY, ILLINOIS ACCORDING TO THE PLAT THEREOF RECORDED SEPTEMBER 21, 2020 AS DOCUMENT R2020080266.

PIN

11-04-17-101-012

GRAPHIC SCALE

(IN FEET)
1 inch = 40 ft.



SEE SHEET 2

DATE	REVISIONS	BY	CHKD	APP'D
06/03/22	REVISED PER VILLAGE REVIEW	AAS		



LOT 1 SEASONS AT ROMEOVILLE SUBDIVISION
ROMEOVILLE, ILLINOIS
PLAT OF EASEMENT GRANT

PROJ. MGR.: JDP
PROJ. ASSOC.: ERY
DRAWN BY: AAS
DATE: 05/24/22
SCALE: 1"=100'
SHEET
1 OF 3
FRDRVLO1

PART OF LOT 1 IN THE FINAL PLAT OF SEASONS AT ROMEVILLE SUBDIVISION, BEING A SUBDIVISION OF THAT PART OF THE WEST HALF OF THE NORTHWEST QUARTER OF SECTION 17, TOWNSHIP 36 NORTH, RANGE 10 EAST OF THE THIRD PRINCIPAL MERIDIAN, IN WILL COUNTY, ILLINOIS ACCORDING TO THE PLAT THEREOF RECORDED SEPTEMBER 21, 2020 AS DOCUMENT R2020080266.

[illegible]

Mannhard
CONSULTING

One Overlook Point, Suite 290, Lincolnshire, IL 60069 ph: 847.634.5550 f: 847.634.0095 mannhard.com
 Civil Engineers | Surveyors | Water Resource Engineers | Water & Waste Water Engineers
 Construction Managers | Environmental Scientists | Landscape Architects | Planners

LOT 1 SEASONS AT ROMEVILLE SUBDIVISION

ROMEVILLE, ILLINOIS

PLAT OF EASEMENT GRANT

ROJ. MGR.: JP
 ROJ. ASSOC.: ERV
 DRAWN BY: AAS
 DATE: 05/24/22
 SCALE: 1"=40'
 SHEET
 2 OF 3
 FRDRVLO1

