

PROJECT DATA

LOT AREA = ±0.91 ACRES

PROPOSED RETAIL = ±6,825 S.F.

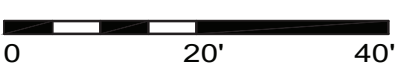
PARKING

REQUIRED PARKING = 27

PROVIDED PARKING = 36

PROPOSED SITE PLAN

SCALE: 1" = 20'-0"



SP-1

PROJECT #: 21064
DATE: 09/17/2021
REVISIONS: 02/21/2022
SCALE: AS NOTED
©COPYRIGHT 2022 arete design studio, ltd.
ALL RIGHTS RESERVED

DEVELOPER:

SAMMY S LLC

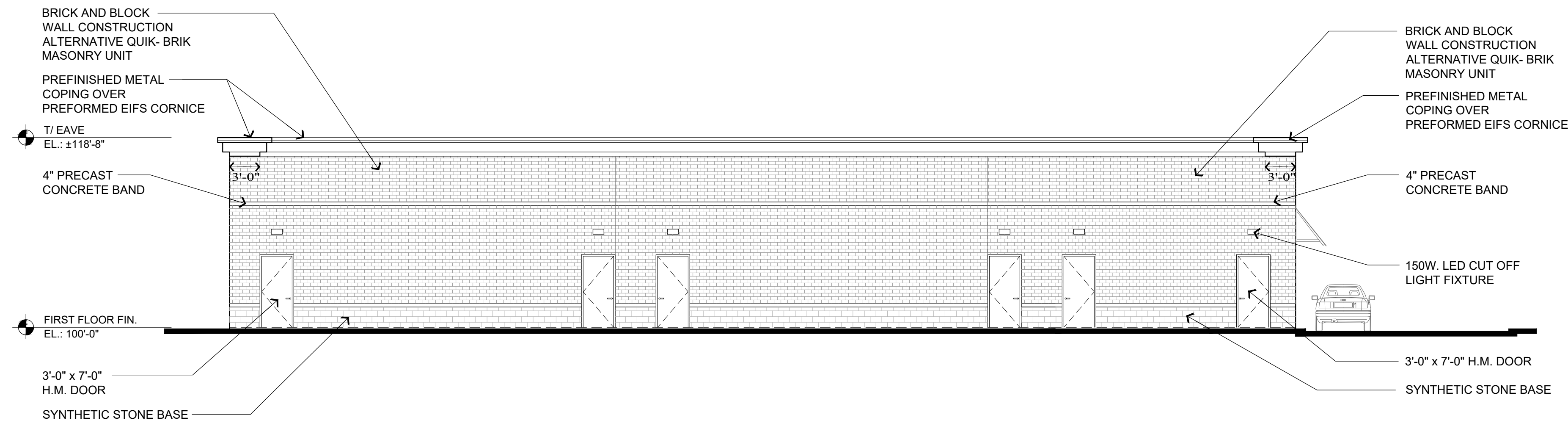
460 N. INDEPENDENCE BLV.
ROMEOVILLE , IL

PROPOSED RETAIL CENTER

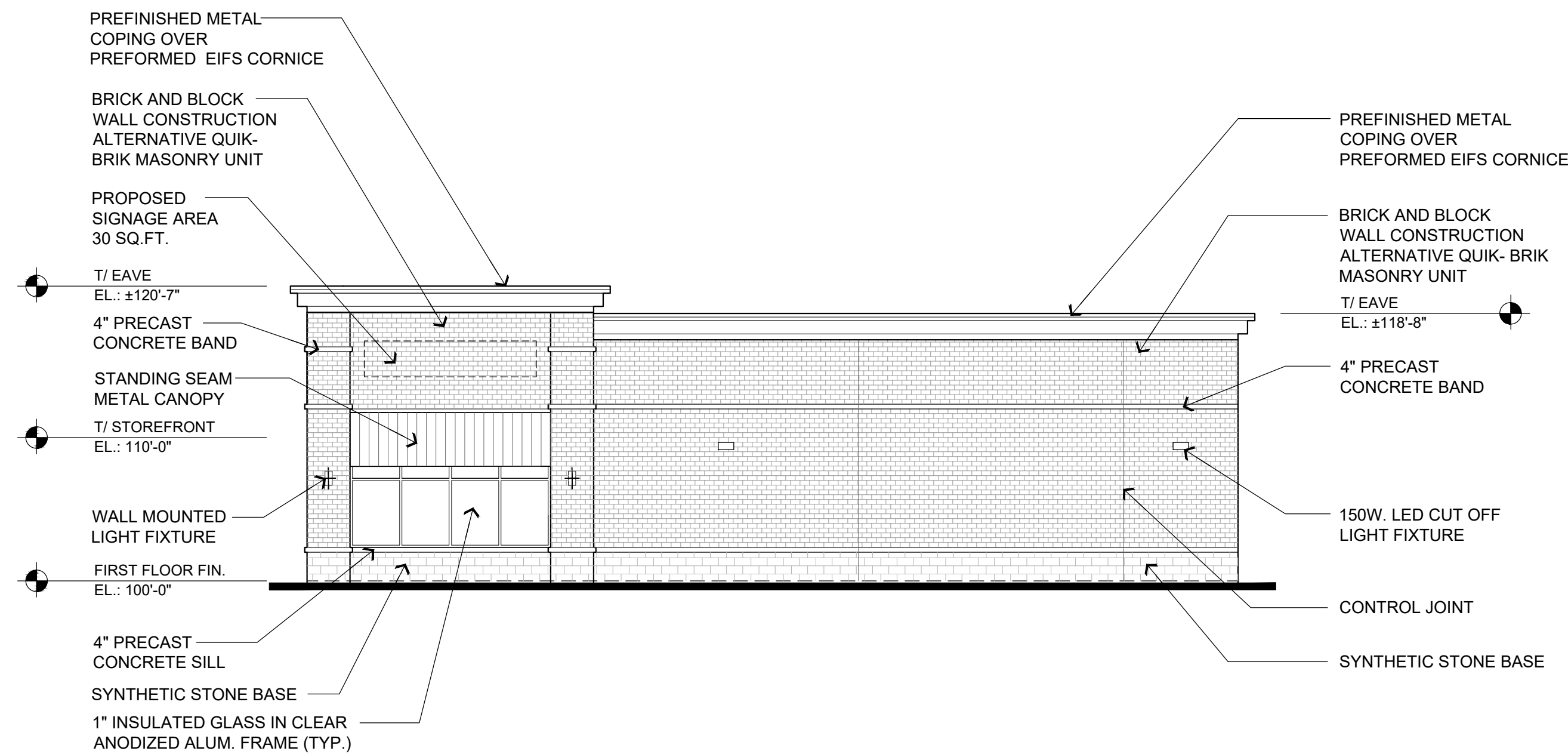
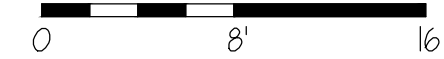
639 N. INDEPENDENCE BLVD.
ROMEOVILLE , IL

ARCHITECT/PLANNER:

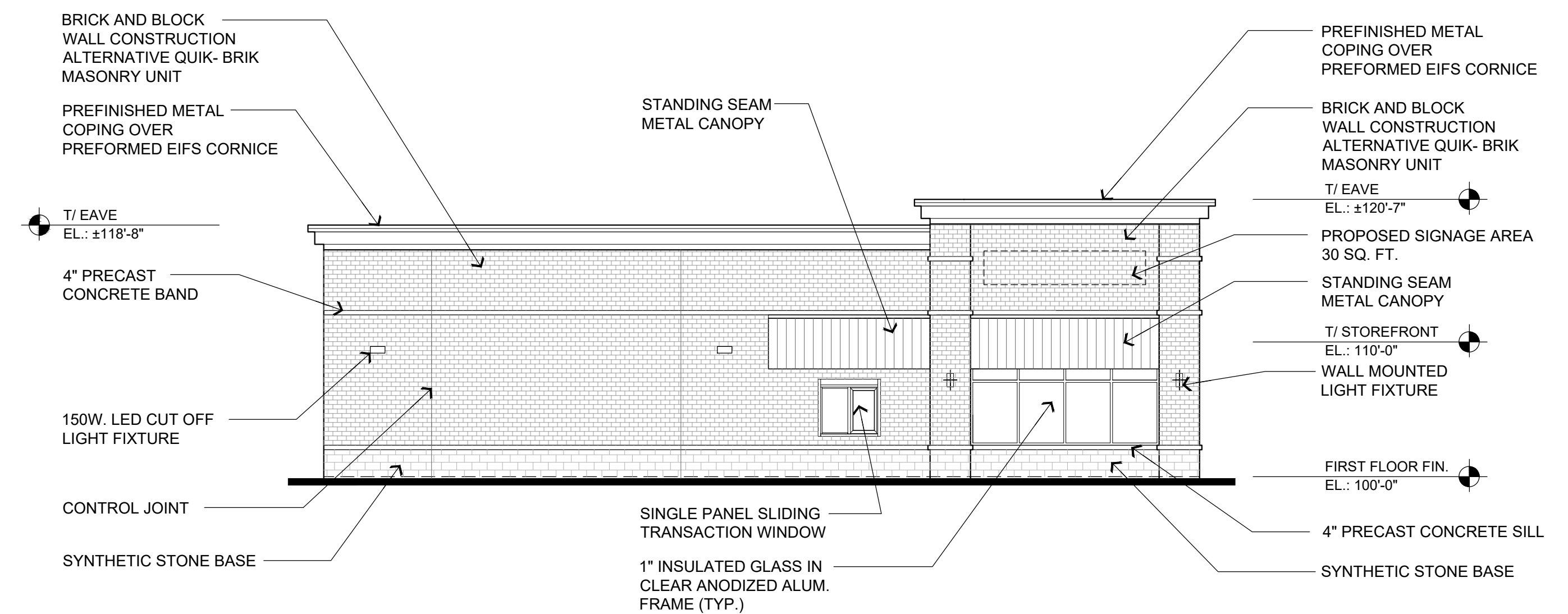
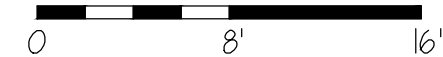
arete design studio
architecture • planning • design
13543 West 185th Street, Mokena, Illinois 60448
815.485.7333 arete-llc.com



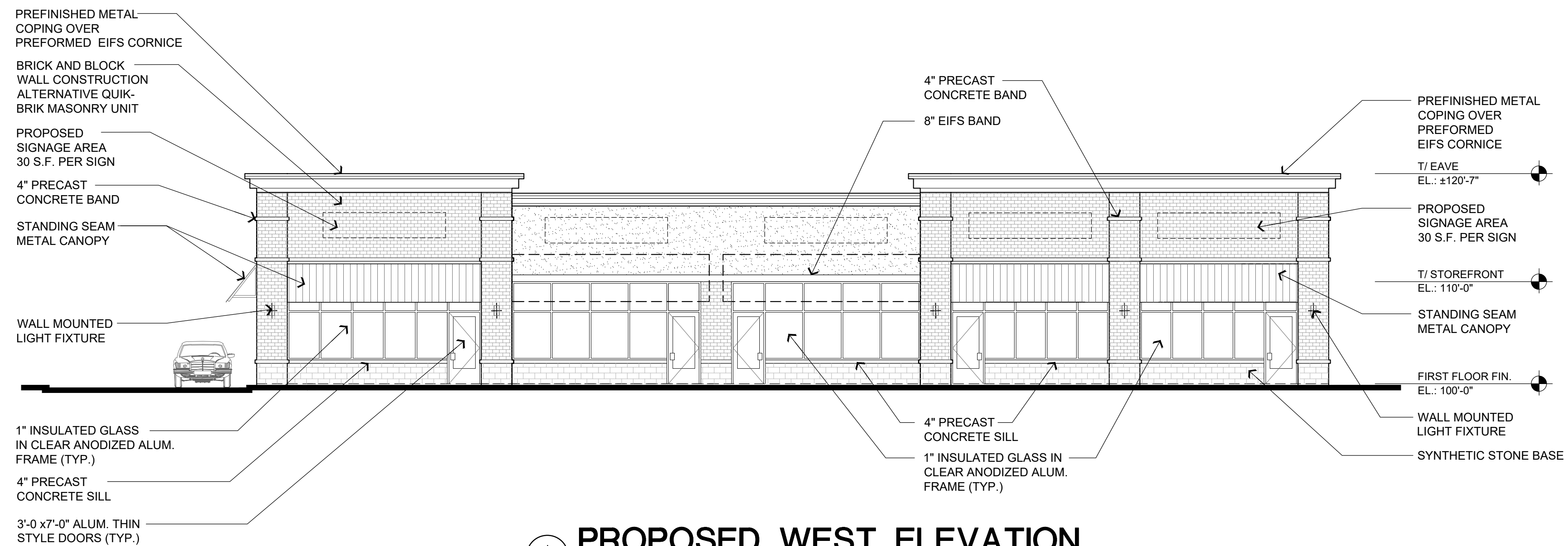
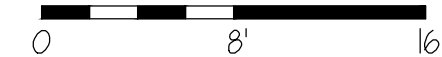
4 **PROPOSED EAST ELEVATION**
SCALE: 1/8" = 1'-0"



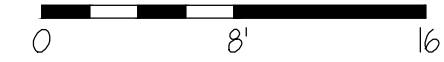
3 **PROPOSED SOUTH ELEVATION**
SCALE: 1/8" = 1'-0"



2 **PROPOSED NORTH ELEVATION**
SCALE: 1/8" = 1'-0"



1 **PROPOSED WEST ELEVATION**
SCALE: 1/8" = 1'-0"



EL-1

PROJECT #: 21064
DATE: 09/17/2021
REVISIONS: 02/21/2022
SCALE: AS NOTED
©COPYRIGHT 2022 arete design studio, ltd.
ALL RIGHTS RESERVED

DEVELOPER:
SAMMY S LLC
460 N. INDEPENDENCE BLV.
ROMEIOVILLE , IL

PROPOSED RETAIL CENTER
639 N. INDEPENDENCE BLVD.
ROMEIOVILLE , IL

ARCHITECT/PLANNER:

arete design studio
architecture • planning • design
13543 West 185th Street, Mokena, Illinois 60448
815.485.7333 arete-llc.com