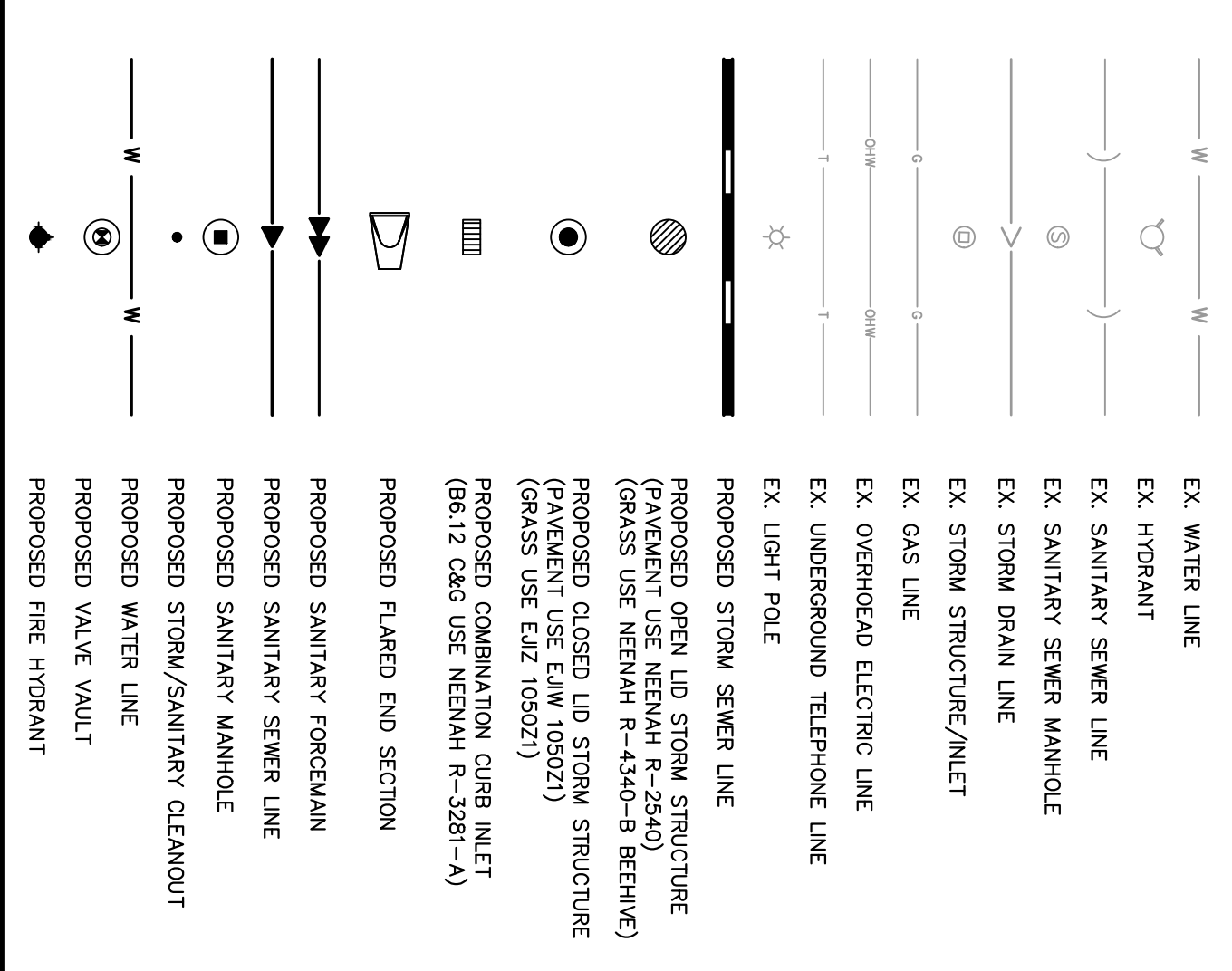


UTILITY NOTES

1. ALL WATER LINES ≥ 3" SHALL BE DUCTILE IRON PIPE, CLASS 52.
2. ALL SANITARY SEWER LINES SHALL BE PVC, MEETING ASTM D-3034 SDR 26. ALL SANITARY SEWER LINES SHALL BE 4" MINIMUM COVER. ALL SANITARY SEWER LINES SHALL BE AWWA C900 (UNLESS WATER MAIN CASING IS UTILIZED). PROVIDE 42" MINIMUM COVER.
3. CONTRACTOR SHALL COORDINATE ANY DISRUPTIONS TO EXISTING UTILITY SERVICES WITH ADJACENT PROPERTY OWNERS.
4. ALL ELECTRIC AND TELEPHONE EXTENSIONS INCLUDING SERVICE LINES SHALL BE CONSTRUCTED TO THE APPROPRIATE UTILITY COMPANY'S SPECIFICATIONS. ALL UTILITY DISCONNECTIONS SHALL BE COORDINATED WITH THE DESIGNATED UTILITY COMPANIES.
5. CONSTRUCTION SHALL NOT START ON ANY PUBLIC UTILITY SYSTEM UNTIL WRITTEN APPROVAL HAS BEEN RECEIVED BY THE ENGINEER FROM THE NOTIFIED UTILITY COMPANIES. CONTRACTOR HAS BEEN NOTIFIED BY THE ENGINEER.
6. CONTRACTOR TO CALL "1-800-892-0123" TO COORDINATE FIELD OR COMMENCE CONSTRUCTION NOTIFY ENGINEER OF ANY DISCREPANCIES IMMEDIATELY.
7. PRIOR TO THE CONSTRUCTION OF OR CONNECTION TO ANY STORM DRAIN, SANITARY SEWER, WATER MAIN OR ANY OTHER UTILITIES, THE CONTRACTOR SHALL EXCAVATE, VERIFY AND CALCULATE ALL POINTS OF CONNECTION AND DEVELOPER OF ANY CONFLICT OR REQUIRED DEVIATIONS FROM THE PLAN. NOTIFICATION SHALL BE A MINIMUM OF 72 HOURS PRIOR TO THE CONSTRUCTION. THE ENGINEER AND HIS CLIENTS SHALL BE HELD HARMLESS IN CONNECTION WITH THE CONSTRUCTION OF ANY UTILITIES. THE CONTRACTOR SHALL BE RESPONSIBLE FOR OBTAINING ALL NECESSARY PERMITS AND APPROVALS FROM ALL AFFECTED AGENCIES. MUNICIPALITY SHALL BE NOTIFIED OF ANY AND ALL CHANGES TO THE DESIGN PLANS.
8. CONTRACTOR SHALL COMPLETELY WITH THE LATEST STANDARDS OF OSHA DIRECTIVES OR ANY OTHER AGENCY HAVING JURISDICTION FOR EXCAVATION AND TRENCHING PROCEDURES. THE CONTRACTOR SHALL USE EXCAVATION AND TRENCHING PROCEDURES THAT ARE APPROVED BY THE MUNICIPALITY. THIS IS TO INCLUDE, BUT NOT LIMITED TO, ACCESS AND EGRESS FROM ALL EXCAVATION AND TRENCHING, AS REQUIRED BY OSHA.
9. CONTRACTOR TO AVOID DISRUPTION OF ANY ADJACENT TENANT'S TRAFFIC OPERATIONS DURING INSTALLATION OF UTILITIES.
10. ALL DIMENSIONS ARE TO CENTERLINE OF PIPE OR CENTER OF MANHOLE UNLESS NOTED OTHERWISE.
11. SEE ARCHITECTURAL AND MEP PLANS FOR EXACT UTILITY CONNECTION LOCATIONS AT BUILDING.
12. STORMWATER FACILITIES MUST BE FUNCTIONAL BEFORE BUILDING CONSTRUCTION BEGINS IF REQUIRED BY AUTHORITY HAVING JURISDICTION.

UTILITY LEGEND

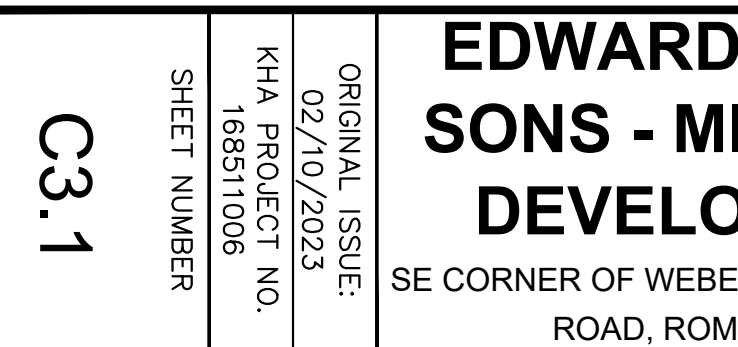
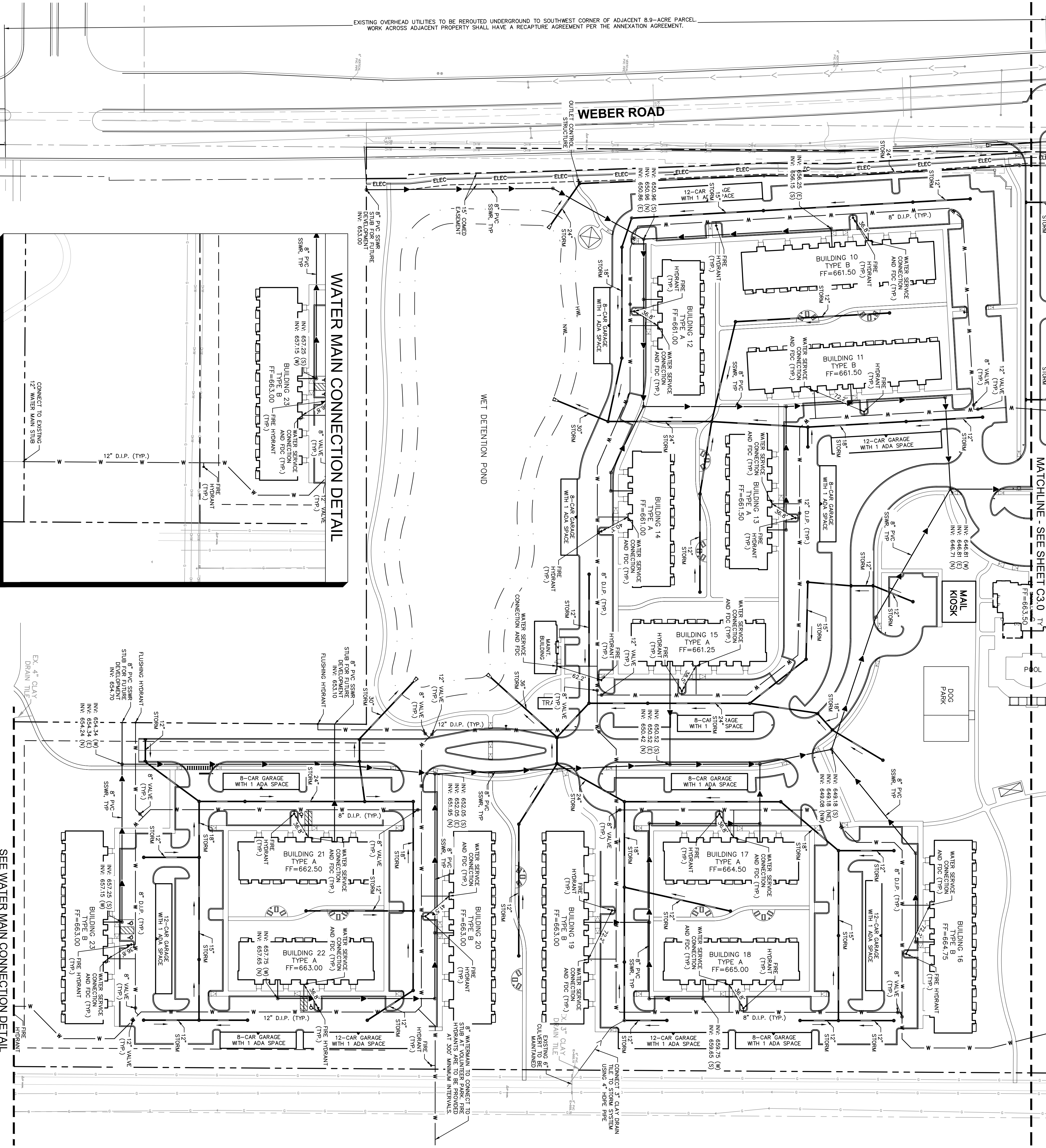


<p><b>EDWARD ROSE &amp; SONS - MIXED USE DEVELOPMENT</b> SE CORNER OF WEBER ROAD AND ROMEO ROAD, ROMEOVILLE IL</p>	<p><b>UTILITY PLAN</b></p>		<p>SCALE: AS NOTED</p>	<p><b>Kimley»Horn</b> © 2024 KIMLEY-HORN AND ASSOCIATES, INC. 4201 WINFIELD ROAD, SUITE 600, WARRENVILLE, IL 60555 PHONE: 630-439-8787 WWW.KIMLEY-HORN.COM</p>	<p>DESIGNED BY: TRE</p>	<p>REVISED PER VILLAGE COMMENTS 04/30/24 TRW</p>
			<p>DRAWN BY: TRW</p>		<p>REVISED PER VILLAGE COMMENTS 03/01/24 TRW</p>	
			<p>CHECKED BY: WAW</p>		<p>REVISED PER VILLAGE COMMENTS 05/12/23 TRW</p>	
			<p>SHEET NUMBER</p>		<p>NO. REVISIONS</p>	<p>DATE BY</p>



This document, together with the concepts and designs presented herein, as an instrument of service, is intended only for the specific purpose and client for which it was prepared. Reuse of and improper reliance on this document without written authorization and adaptation by Kimley-Horn and Associates, Inc. shall be without liability to Kimley-Horn and Associates, Inc.

EXISTING OVERHEAD UTILITIES TO BE REROUTED UNDERGROUND TO SOUTHWEST CORNER OF ADJACENT 8.9-ACRE PARCEL.  
 WORK ACROSS ADJACENT PROPERTY SHALL HAVE A RECAPTURE AGREEMENT PER THE ANNEXATION AGREEMENT.



### UTILITY LEGEND

	EX. WATER LINE
	EX. HYDRANT
	EX. SANITARY SEWER LINE
	EX. SANITARY SEWER MANHOLE
	EX. STORM DRAIN LINE
	EX. STORM STRUCTURE/INLET
	EX. GAS LINE
	EX. OVERHEAD TELEPHONE LINE
	EX. LIGHT POLE
	PROPOSED STORM SEWER LINE
	PROPOSED OPEN LID STORM STRUCTURE (GRASS USE NEMA# R-4340-B BEHIVE)
	PROPOSED CLOSED LID STORM STRUCTURE (GRASS USE IZ 109021)
	PROPOSED CURB INLET (8x12 C&G USE NEMA# R-3281-A)
	PROPOSED FLARED END SECTION
	PROPOSED SANITARY FORCEMAIN
	PROPOSED SANITARY MANHOLE
	PROPOSED STORM/SANITARY CLEANOUT
	PROPOSED WATER LINE
	PROPOSED VALVE VAULT
	PROPOSED FIRE HYDRANT

- ### UTILITY NOTES
- ALL WATER LINES ≥ 3" SHALL BE DUCTILE IRON PIPE CLASS 52.
  - ALL SANITARY SEWER LINES SHALL BE PVC MEETING ASTM D-3034 SDR 26 EXCEPT FOR 18" WHICH SHALL BE 15' MINIMUM COVER UNLESS WATER MAIN CASING IS UTILIZED. PROVIDE 42" MINIMUM COVER.
  - CONTRACTOR SHALL COORDINATE ANY DISRUPTIONS TO EXISTING UTILITY SERVICES WITH ADJACENT PROPERTY OWNERS.
  - ALL ELECTRIC AND TELEPHONE EXTENSIONS INCLUDING SERVICE LINES SHALL BE CONSTRUCTED TO THE APPROPRIATE UTILITY COMPANY'S SPECIFICATIONS. ALL UTILITY DISCONNECTIONS SHALL BE COORDINATED WITH THE DESIGNATED UTILITY COMPANIES.
  - CONSTRUCTION SHALL NOT START ON ANY PUBLIC UTILITY SYSTEM UNTIL WRITTEN APPROVAL HAS BEEN RECEIVED BY THE ENGINEER FROM THE APPROPRIATE AGENCY AUTHORITY AND CONTRACTOR HAS BEEN NOTIFIED BY THE ENGINEER.
  - CONTRACTOR TO CALL "TILE" (1-800-892-0123) TO COORDINATE FIELD SURVEY AND CONSTRUCTION OF ANY DISCREPANCIES IMMEDIATELY.
  - PRIOR TO THE CONSTRUCTION OF OR CONNECTION TO ANY STORM DRAIN, SANITARY SEWER, WATER MAIN OR ANY OTHER UTILITIES, THE CONTRACTOR SHALL EXCAVATE, VERIFY AND CALCULATE ALL POINTS OF CONNECTION AND IDENTIFY ALL "CONFLICT" OR REQUIRED DEVIATIONS FROM THE PLAN. NOTIFICATION SHALL BE MADE A MINIMUM OF 72 HOURS PRIOR TO CONSTRUCTION. THE ENGINEER AND HIS CLIENTS SHALL BE HELD HARMLESS IN CONNECTION WITH ANY AND ALL CHANGES TO THE DESIGN PLANS.
  - CONTRACTOR SHALL COMPLETELY WITH THE LATEST STANDARDS OF OSHA DIRECTORS OR ANY OTHER AGENCY HAVING JURISDICTION FOR EXCAVATION AND TRENCHING PROCEDURES. THE CONTRACTOR SHALL USE SHIELDING AND PROTECTIVE DEVICES TO PROTECT ALL UTILITIES. THIS IS TO INCLUDE, BUT NOT LIMITED TO, ACCESS AND EGRESS FROM ALL EXCAVATION AND TRENCHING, AS REQUIRED BY OSHA.
  - CONTRACTOR TO AVOID DISRUPTION OF ANY ADJACENT TENANT'S TRAFFIC OPERATIONS DURING INSTALLATION OF UTILITIES.
  - ALL DIMENSIONS ARE TO CENTRELINE OF PIPE OR CENTER OF MANHOLE UNLESS NOTED OTHERWISE.
  - SEE ARCHITECTURAL AND MEP PLANS FOR EXACT UTILITY CONNECTION LOCATIONS AT BUILDING.
  - STORMWATER FLOWLINES MUST BE DIRECTIONAL BEFORE BUILDING CONSTRUCTION BEGINS IF REQUIRED BY AUTHORITY HAVING JURISDICTION.

GRAPHIC SCALE IN FEET  
 0 30 60 120  
**7** **CALL**  
 Before You Dig  
**1-800-892-0123**

No.	REVISIONS	DATE	BY
1	REVISED PER VILLAGE COMMENTS	04/30/24	TRW
2	REVISED PER VILLAGE COMMENTS	03/01/24	TRW
3	REVISED PER VILLAGE COMMENTS	05/12/23	TRW

**EDWARD ROSE & SONS - MIXED USE DEVELOPMENT**  
 SE CORNER OF WEBER ROAD AND ROMEO ROAD, ROMEOVILLE IL

ORIGINAL ISSUE: 02/10/2023  
 KHA PROJECT NO. 168511006  
 SHEET NUMBER C3.1

**UTILITY PLAN**

SCALE: AS NOTED  
 DESIGNED BY: TRE  
 DRAWN BY: TRW  
 CHECKED BY: WAW

**Kimley-Horn**  
 © 2024 KIMLEY-HORN AND ASSOCIATES, INC.  
 4201 WINFIELD ROAD, SUITE 600,  
 WARRENVILLE, IL 60555  
 PHONE: 630-397-8787  
 WWW.KIMLEY-HORN.COM

No.	REVISIONS	DATE	BY
1	REVISED PER VILLAGE COMMENTS	04/30/24	TRW
2	REVISED PER VILLAGE COMMENTS	03/01/24	TRW
3	REVISED PER VILLAGE COMMENTS	05/12/23	TRW