



Project Compliance Report

Date: September 17, 2025

Description/Title: QT at Normantown and Weber

Type of Review: Plat of Dedication

Summary:

The QuikTrip Corporation has submitted a plat of dedication for a small area adjacent to Normantown Road.

The following chart describes the zoning and land uses surrounding the property.

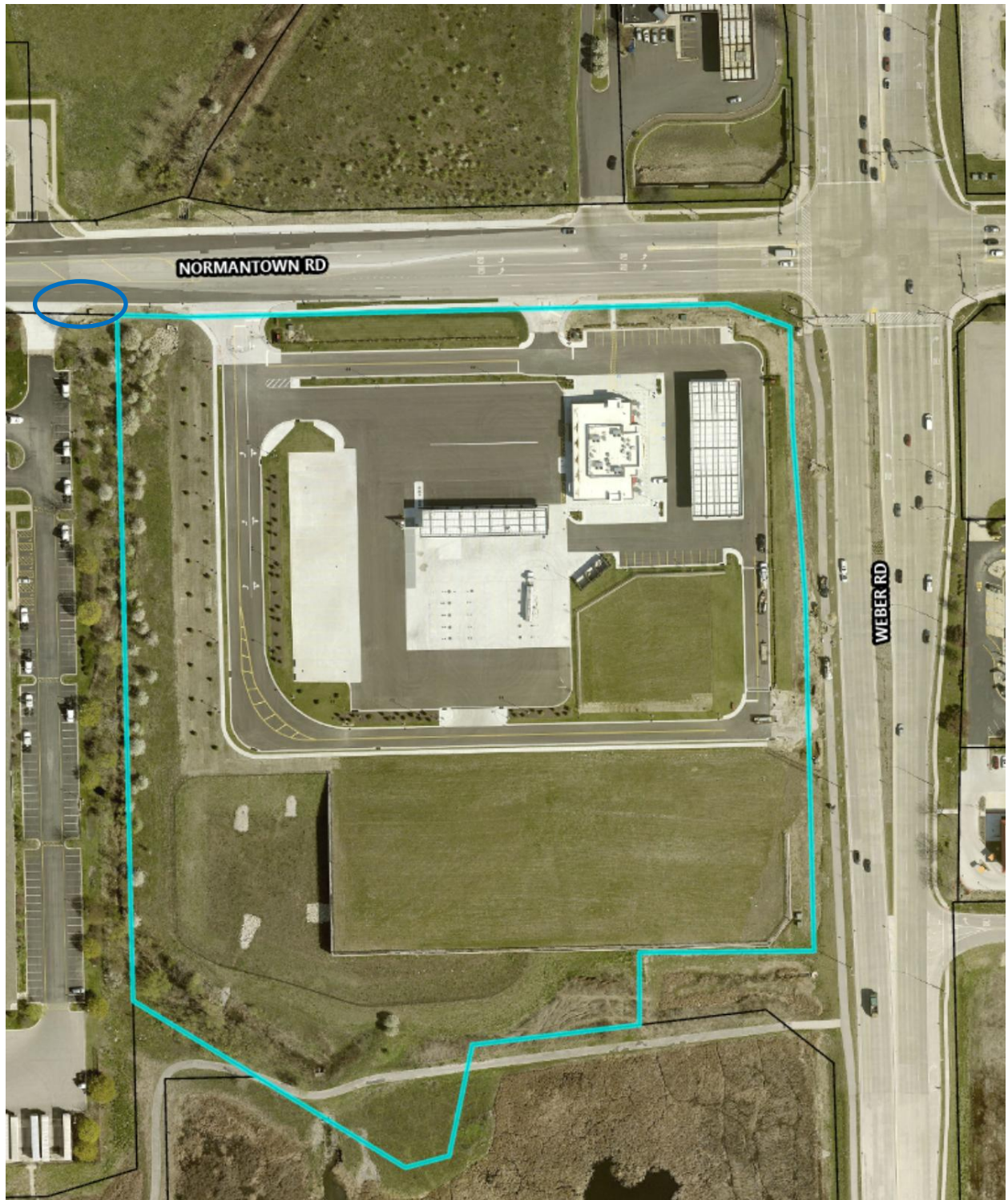
	<i>ZONING</i>	<i>LAND USE</i>	<i>USER</i>
<i>SITE</i>	B-3, Highway / Regional Commercial	Commercial	QT (ROW)
<i>NORTH</i>	B-3, Highway / Regional Commercial	Commercial	Rebel
<i>SOUTH</i>	P-B, Planned Business	Industrial	Lily Cache Slough
<i>EAST</i>	B-3, Highway / Regional Commercial	Commercial	Vacant & McDonald's
<i>WEST</i>	P-B, Planned Business	Industrial	WSWQ-1

The new QuikTrip has opened. The site has a full access point located at the northwest corner of the property. To enable this to become signalized subject to IDOT approval based on the proximity to Weber Road, a small dedication is required. This right of way dedication area is approximately 1490 square feet and located to the west of the QT intersection in front of the adjacent property. This dedication is also required for the public utilities and associated easement provisions.

Recommendation:

The Development review Committee has reviewed the proposal and is recommending approval contingent on compliance with outstanding staff comments.

Aerial:



Presenter: SW