



G L E A S O N  
ARCHITECTS, P.C.

04/17/2026

1200 W Lakeview Ct, Romeoville, IL

We are proposing a 22,729 sf precast warehouse that is 32'-0" tall. This warehouse will have 3 overhead doors with an office area that will be in the Northeast corner of the building. The size of the office will most likely be approximately 3000-4000 sf, this will depend on the end users needs. There will be a window wall facing the Southeast addressing the street.

The building will be fully landscaped and meet the requirements of the PUD and the Village of Romeoville.

J:\Dwgs\Projects\Commercial\25-061 Romeoville Warehouse\00-Current\PLanning and Zoning\Romeoville Letter.docx

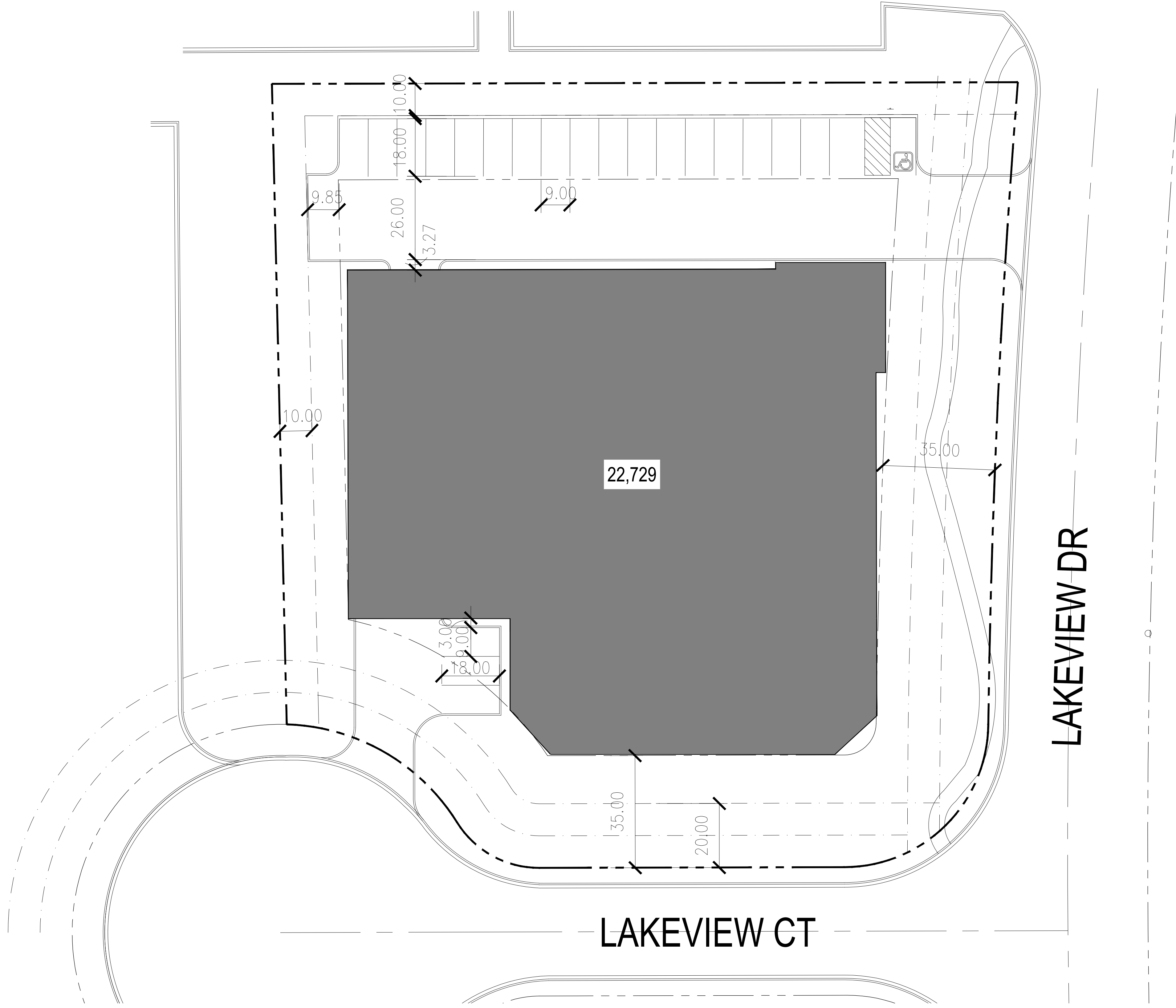
769 Heartland Drive, Unit A Sugar Grove, Illinois 60554

Phone: 630-466-8740

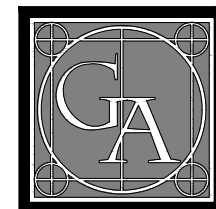
E-mail: [dianeduncan@gleasonarchitectspc.com](mailto:dianeduncan@gleasonarchitectspc.com)

# ROMEOVILLE WAREHOUSE

1200 LAKEVIEW CT, ROMEOVILLE, IL

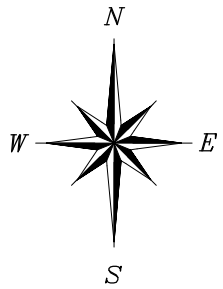


PRELIMINARY SCHEMATIC DESIGN.  
COPYRIGHT 2026 GLEASON ARCHITECTS, P.C.  
DATE: 4/10/2026  
JOB NUMBER: 26-014



GLEASON ARCHITECTS, P.C.

769 Heartland Drive, Unit A Sugar Grove, Illinois  
Phone: 630-466-8740 Fax: 630-466-8760

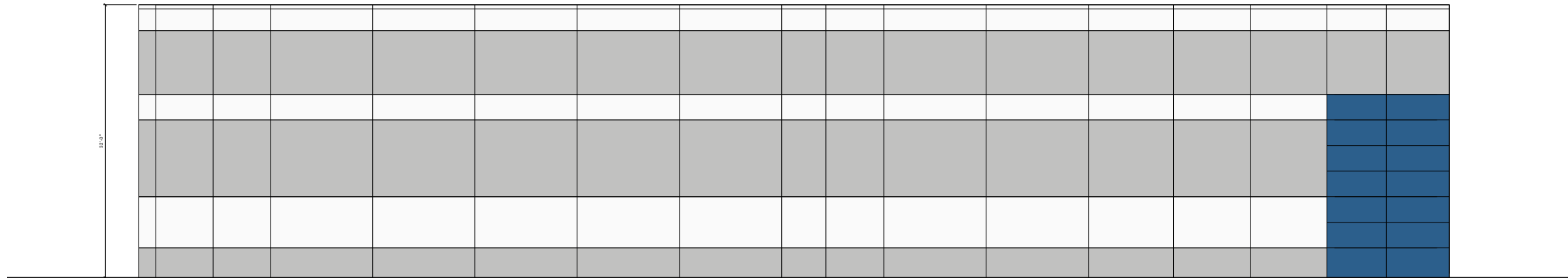
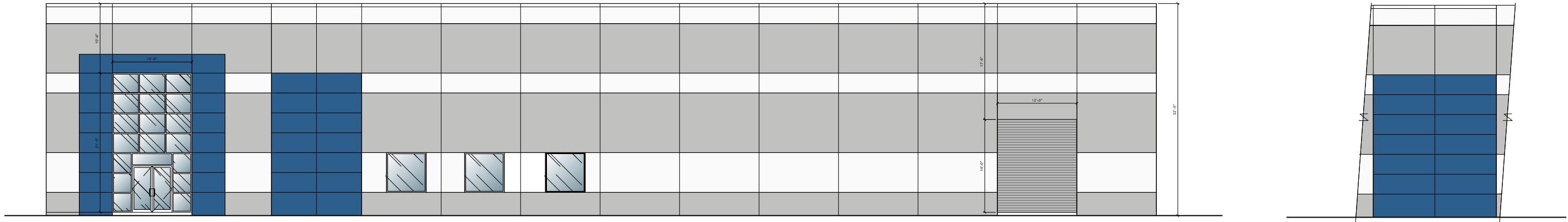


## SITE PLAN

SCALE: 1"=20'

F:\WORK\Romeoville\Site\01-sxarn (2).dwg

# ROMEORVILLE WAREHOUSE



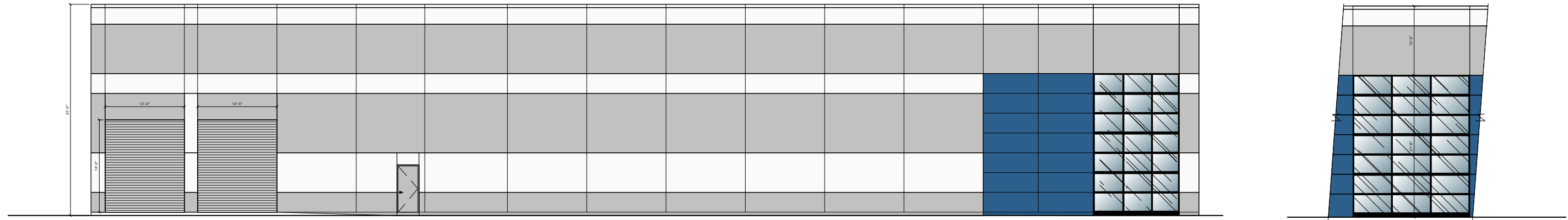
PRELIMINARY SCHEMATIC DESIGN.  
COPYRIGHT 2006 GLEASON ARCHITECTS, P.C.  
DATE: 4/17/2026  
JOB NUMBER:



GLEASON ARCHITECTS, P.C.

769 Heartland Drive, Unit A Sugar Grove, Illinois  
Phone: 630-466-8740 Fax: 630-466-8760

# ROMEOVILLE WAREHOUSE



PRELIMINARY SCHEMATIC DESIGN.  
COPYRIGHT 2006 GLEASON ARCHITECTS, P.C.  
DATE: 4/17/2026  
JOB NUMBER:



GLEASON ARCHITECTS, P.C.

769 Heartland Drive, Unit A Sugar Grove, Illinois  
Phone: 630-466-8740 Fax: 630-466-8760