

**earthmover** | credit union  
DRIVE THRU OPEN    ATM OPEN





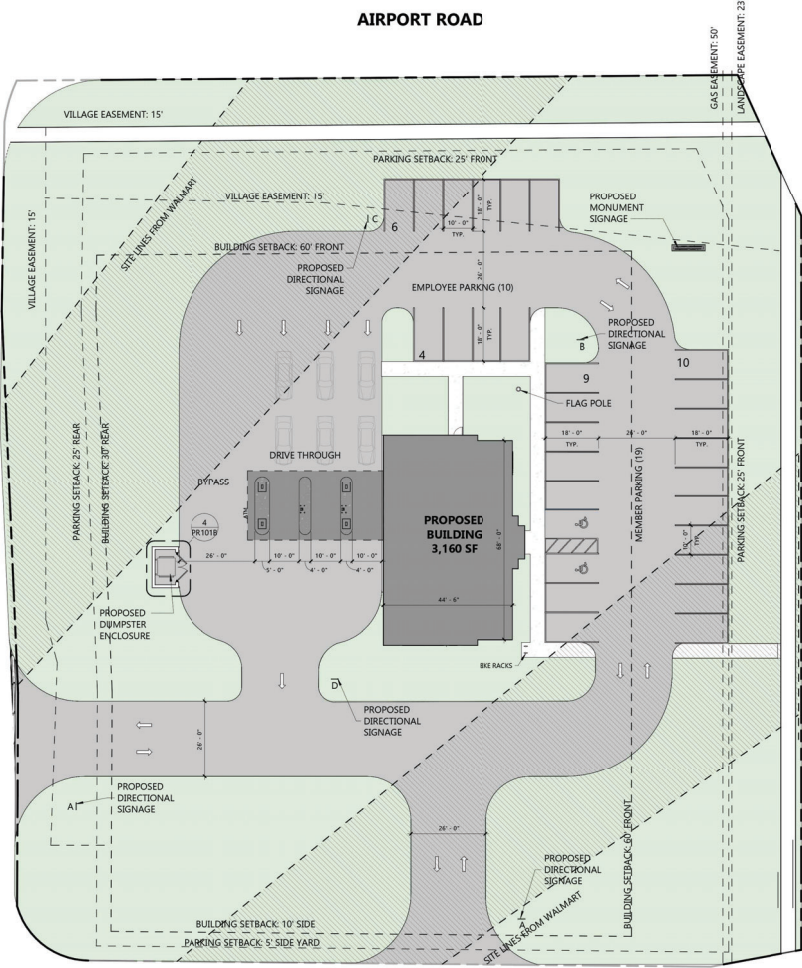
earthmover credit union

earthmover.com

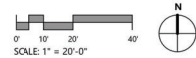


earthmover

credit union



1 SITE PRESENTATION PLAN - OPT 1  
1" = 20'-0"



**SITE INFORMATION**

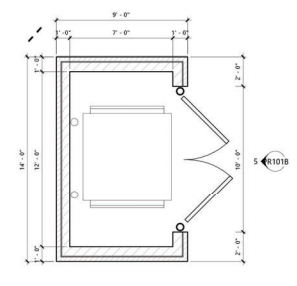
**CURRENT ZONING**  
B-3 HIGHWAY REGIONAL SHOPPING

**BUILDING SETBACKS (MINIMUMS)**  
FRONT: 60'  
SIDE: 10'  
REAR: 30'

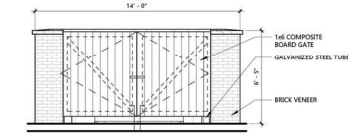
**LANDSCAPE SETBACKS (MINIMUMS)**  
FRONT / REAR: 25'  
SIDE: 5'

**BUILDING REQUIREMENTS**  
BUILDING HEIGHT (TYP.): 40' (PER CITY OF ROMEOVILLE)  
24' (PER WALMART CROSSING COVENANTS)

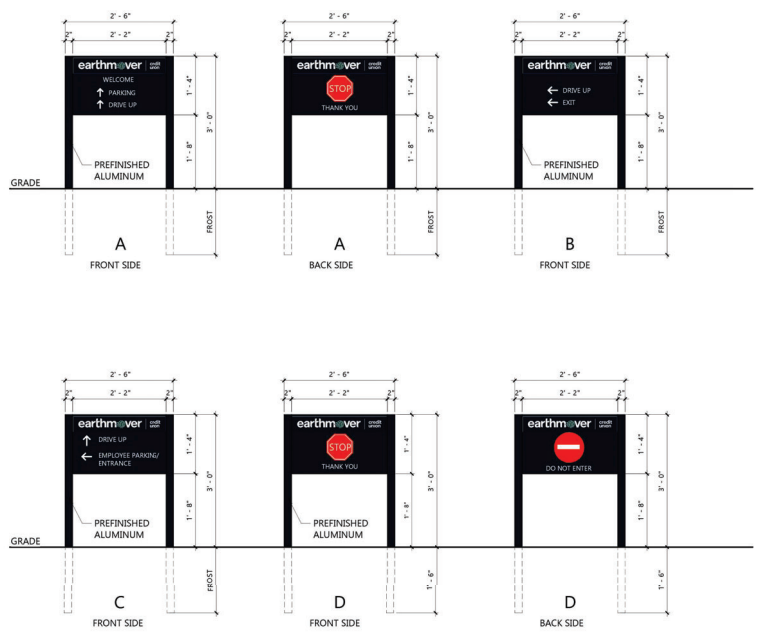
**PARKING REQUIREMENTS**  
MIN. 1 STALL PER 200 SF REQUIRED (PER CITY OF ROMEOVILLE)  
5 STALLS PER 1000 SF REQUIRED (PER WALMART CROSSING COVENANTS)  
16 STALLS REQUIRED PER CITY OF ROMEOVILLE  
16 REQUIRED PER WALMART CROSSING DEVELOPMENT  
29 STALLS PROVIDED (INCLUDED 2 ACCESSIBLE STALLS)



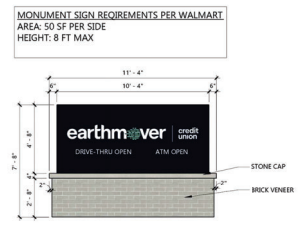
4 TRASH ENCLOSURE - PLAN  
1/4" = 1'-0"



5 TRASH ENCLOSURE GATES  
1/4" = 1'-0"



2 DIRECTIONAL SIGNAGE  
3/4" = 1'-0"



3 MONUMENT SIGN ELEVATION  
1/4" = 1'-0"

# Earthmover Credit Union - Romeoville, IL

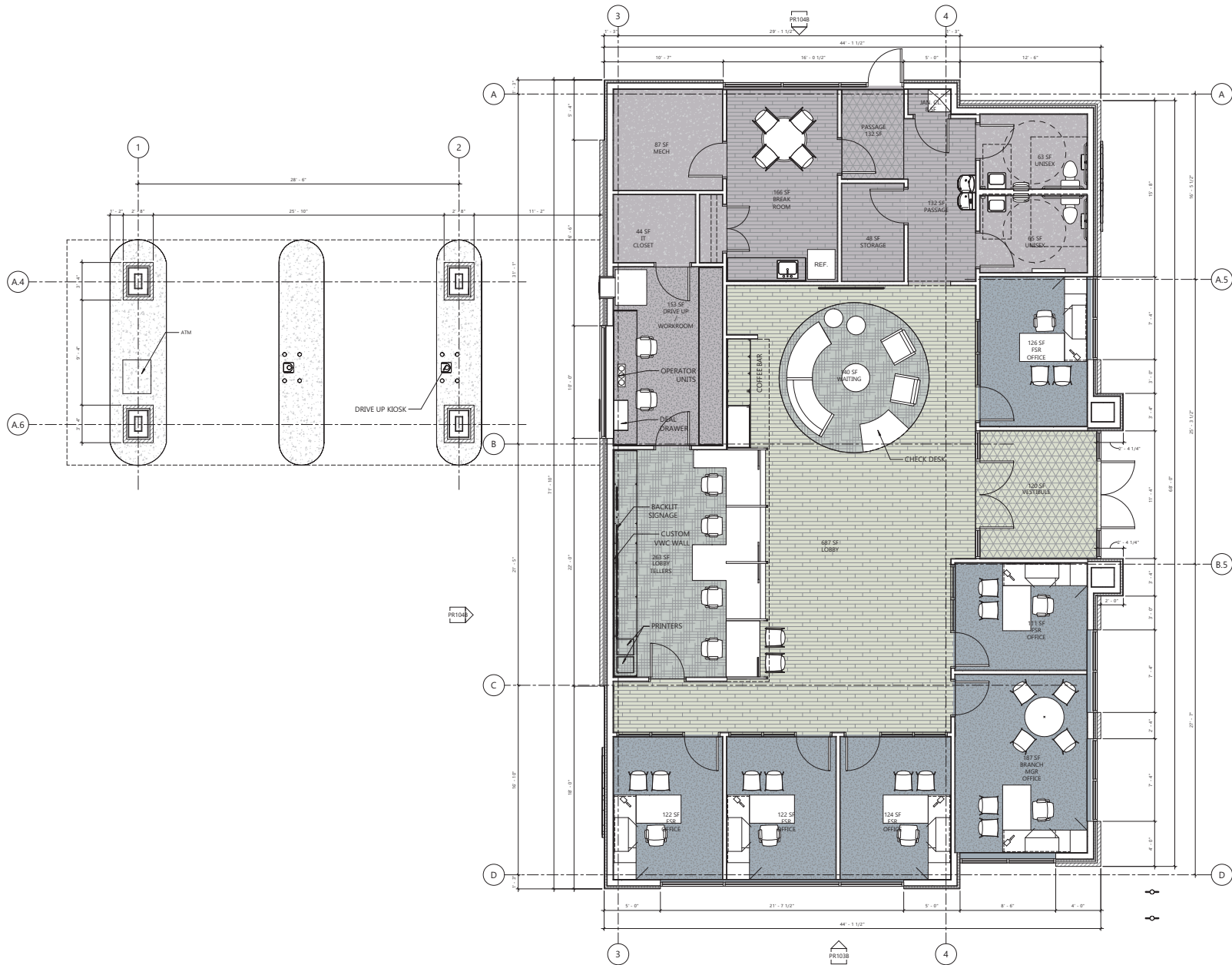
Proposed Site Plan



24053

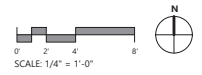
03/13/2024

© 2021 The Redmond Company



Department Legend

- LOBBY / CORRIDOR
- OFFICE
- RETAIL / WAITING
- SUPPORT



**Earthmover Credit Union - Romeoville, IL**

Proposed Floor Plan