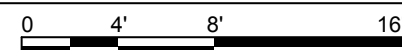


1 FLOOR PLAN
1/8" = 1'-0"



CARE CREMATION CENTER

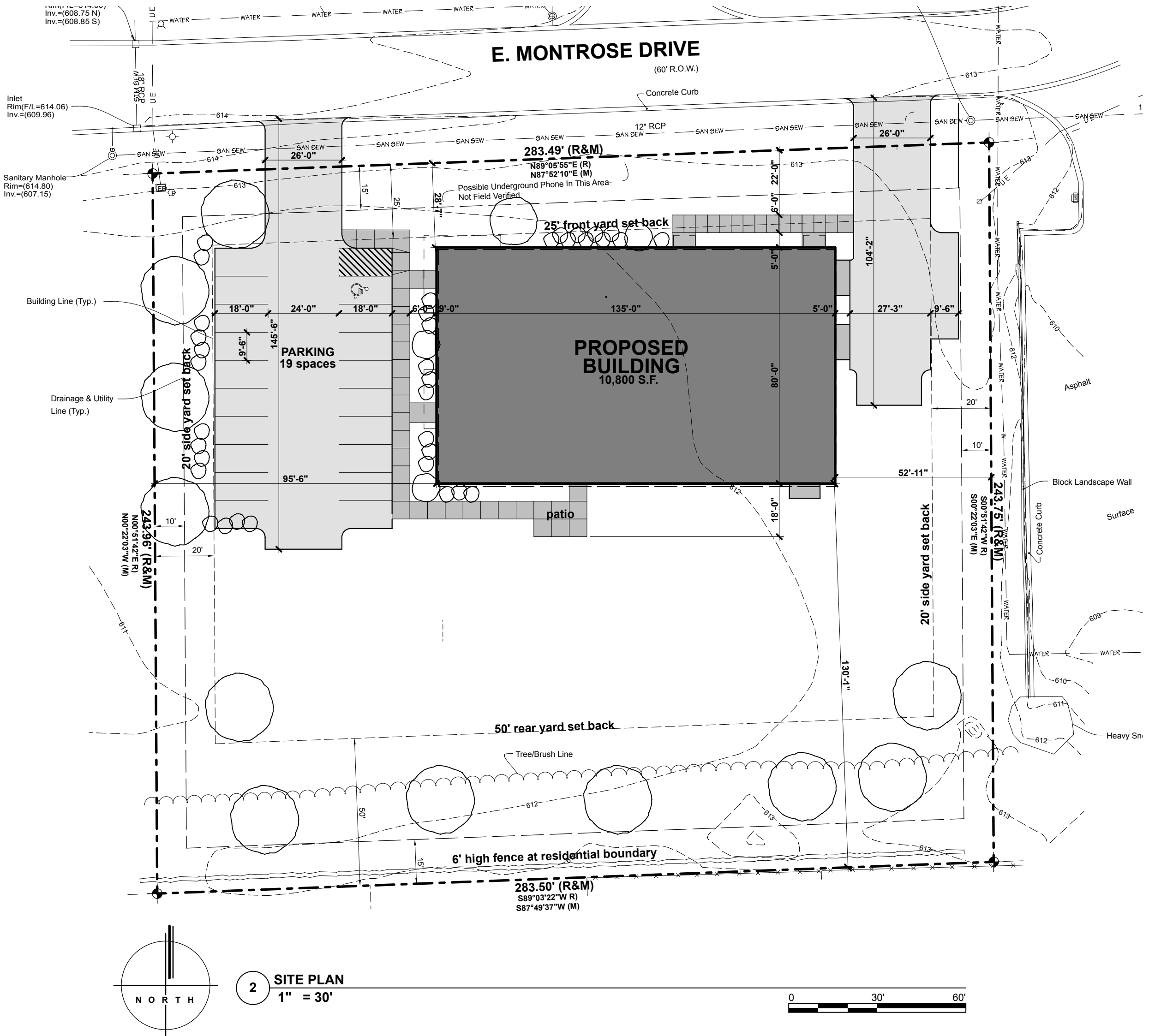
33 EAST MONTROSE DRIVE
ROMEIOVILLE, ILLINOIS 60446

SHEET NO.

P-001

DATE :

3/26/21



SITE/BUILDING STATISTICS

CARE CREMATION CENTER
33 EAST MONTROSE DRIVE
ROMEIOVILLE, IL 60446

SITE

DISTRICT: M-1

USE: CREMATORIUM

AREA: 69,098 SQ. FT. / 1.59 ACRES

LOT WIDTH/FRONTAGE: 283.49'

LOT DEPTH: 243.96'

LOT COVERAGE/IMPERVIOUS SURFACE:
LOT AREA: 69,098 SF
IMPERVIOUS SURFACE: 22,946 SF

LOT COVERAGE PLUS IMPERVIOUS SURFACE: 22,946 SF of 69,098 SF or 33.21%

BUILDING HEIGHT:
ALLOWED: 40'-0"
ACTUAL: 17'-0"

PROPOSED BUILDING AREA: 10,800 SQ. FT.

BUILDING SETBACKS:

FRONT YARD:
ALLOWED: 25'-0"
ACTUAL: 28'-7"
SIDE YARD:
EAST: 20'-0"
ACTUAL: 52'-11"
WEST: 20'-0"
ACTUAL: 95'-6"
REAR YARD:
ALLOWED: 50'-0"
ACTUAL: 130'-1"

FLOOR AREA RATIO: 10,800 SQ. FT. / 69,098 SQ. FT. = 0.16



320.251.4109 | 320.251.4693 fx
3335 West St Germain Street
PO Box 1228
St Cloud, MN 56302

PROJECT STATUS
Not For Construction



CARE CREMATION CENTER

33 EAST MONTROSE DRIVE
ROMEOVILLE, ILLINOIS 60446

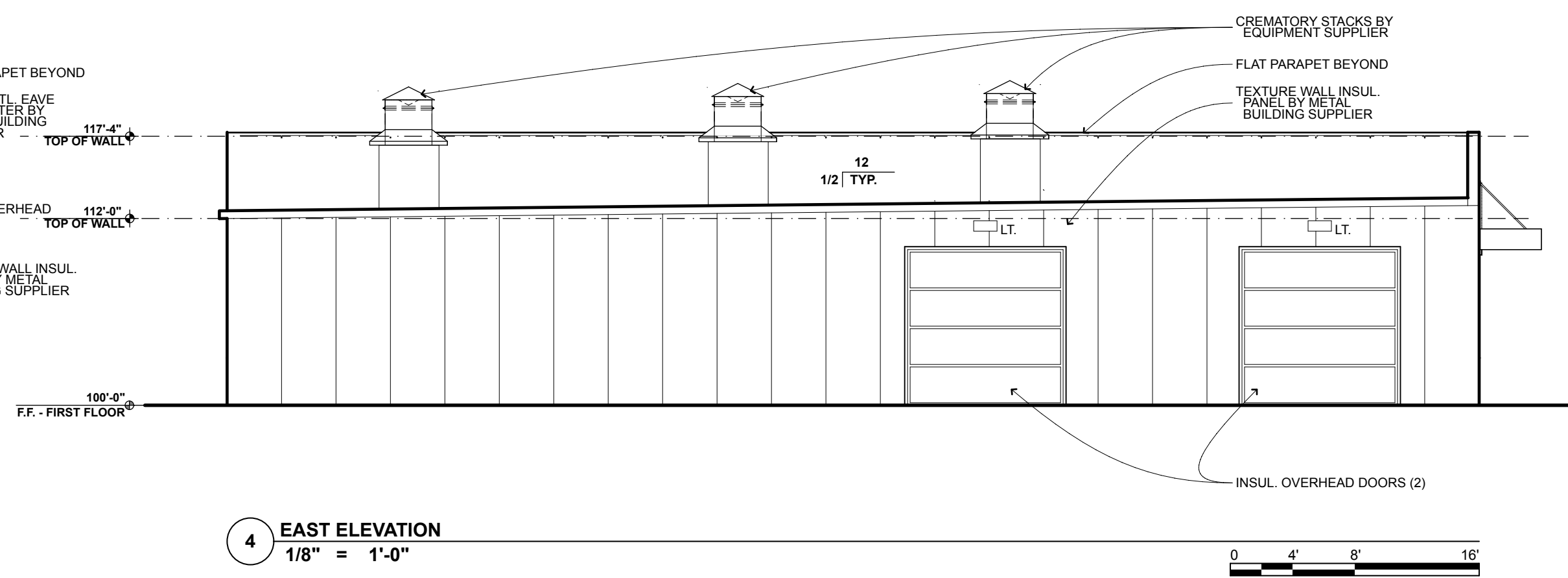
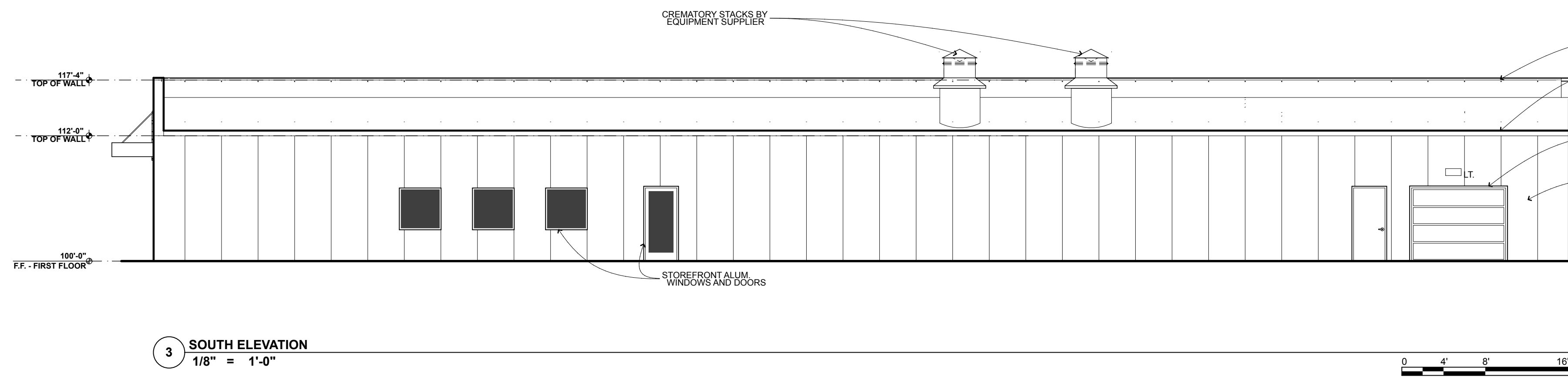
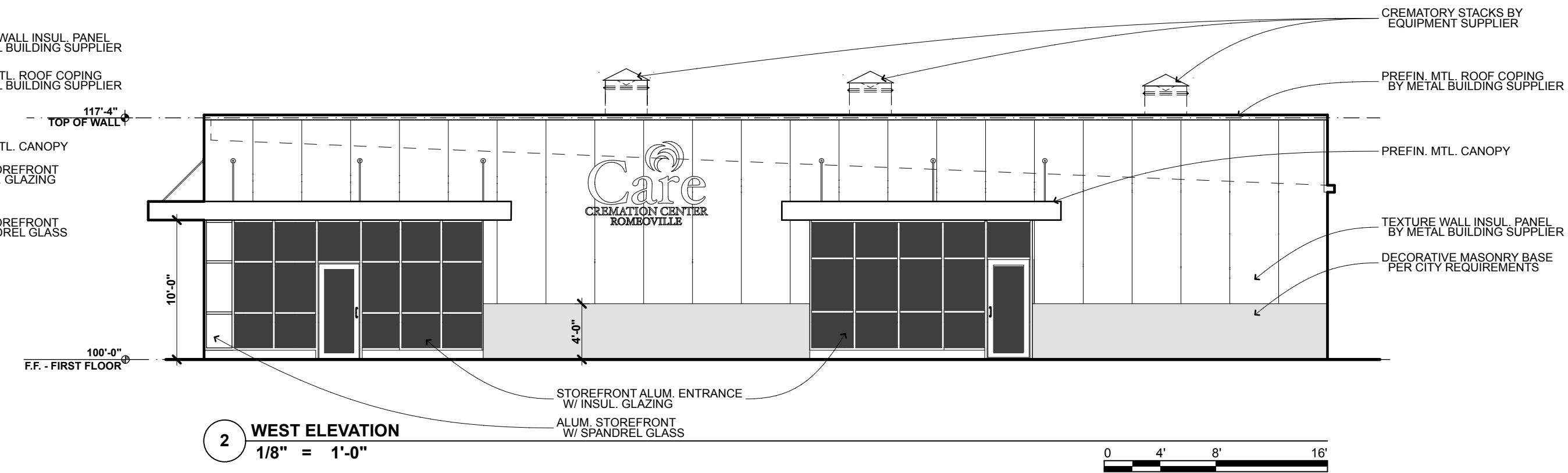
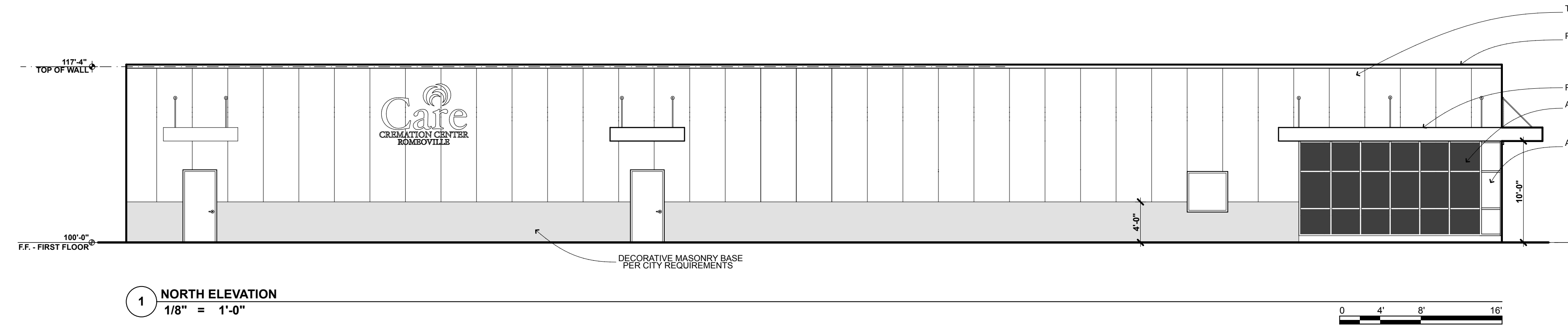
SHEET NO.
P-003

DATE :
3/26/21

PROJECT STATUS
Not For Construction



320.251.4109 | 320.251.4693 fx
3335 West St Germain Street
PO Box 1228
St Cloud, MN 56302



CARE CREMATION CENTER
33 EAST MONTROSE DRIVE
ROMEOVILLE, ILLINOIS 60446

SHEET NO. P-002
DATE : 3/26/21

PROJECT STATUS
Not For Construction



320.251.4109 | 320.251.4693 fx
3335 West St Germain Street
PO Box 1228
St Cloud, MN 56302

Exceptional Care-
Affordable Price!

Direct Cremation Package

\$1,165.00

Absolutely No Hidden Fees

PACKAGE INCLUDES

- In Office or In Home Consultation
- Removal and Care of the Deceased
- All Permits and Fees
- 3 Certified Death Certificates
- Alternative Container Used During Cremation
- All Crematory Fees
- Hardwood Urn Including Deceased Name and Dates
- Hand Delivery of Cremains and Death Certificates

Call Care Memorial Toll Free

1-866-912-9822

24 Hours • 7 Days

Our Office Locations

Bridgeview Office

Hann Funeral Home
8230 S. Harlem Avenue
Bridgeview, IL 60455
708-496-3344

Romeoville Office

Care Cremation Center
515 Anderson Drive, Suite 100
Romeoville, IL 60446
815-306-3800

Hanover Park Office

Care Memorial Cremation
7225 Longmeadow Lane
Hanover Park, IL 60133
630-855-6960

Our Coverage Area




Care Memorial
CREMATION

*When
Forever
Begins...*

1-866-912-9822

Visit Us Online At
www.carememorial.com
For Complete Details.

WELCOME



Care Memorial specializes in simple direct cremation services in Chicago and most of North East Illinois.

We pride ourselves not only in the Care of the deceased, but also by helping families create a lasting Memorial for their loved one.

When someone passes, we know family members are faced with countless choices. In that difficult time, the best and most economical option for cremation is Care Memorial.

We offer prearranged services. Making arrangements ahead of time relieves your family of that responsibility. Call us today for a FREE consultation.

We hand deliver all cremated remains.

Care Memorial

CREMATION

1-866-912-9822

OUR CREMATORY

Care Cremation Center is located in Romeoville, IL and is open Monday through Friday 8:00 a.m. - 4:00 p.m. or anytime Saturday by appointment.

We encourage you to stop by, take a tour and ask questions.

EXTRA CREMATORY FEES

ID Family Viewing \$ 95.00

Up to 12 persons at Our Crematory.

Witness Cremation \$ 95.00

Up to 12 persons at Care Cremation Center.

ID View and Witness \$165.00

Up to 12 persons at Care Cremation Center.

Family Farewell Package \$385.00

Up to 20 persons at Care Cremation Center, one hour gathering, upgraded cremation casket, dressing, cosmetizing and 20 keepsake prayer cards.

HANOVER PARK OFFICE

ID Family Viewing \$135.00

Up to 4 persons at Our Hanover Park Office.

OUR FUNERAL HOME

Hann Funeral Home, located in Bridgeview, IL, is capable of hosting large family gatherings like memorials and visitations.

EXTRA FUNERAL HOME FEES

ID Family Viewing \$135.00

Up to 12 persons at Our Funeral Home.

Family Farewell Package \$465.00

Up to 35 persons at Hann Funeral Home, 1-hour gathering, upgraded cremation casket, dressing, cosmetizing and 35 keepsake prayer cards.

Memorial Service \$825.00

A public gathering after cremation. Includes use of facilities, prayer cards, register book and thank you cards.

***Family & Friends First** \$3,895.00

2-hours public viewing before cremation. Includes use of facilities, embalming, rental casket, prayer cards, register book and thank you cards.

***Evening Visitation First** \$4,795.00
Family & Friends Package plus 6-hour evening visitation before cremation.

***Traditional Funeral First** \$5,495.00
Evening Visitation First Package plus funeral services the next morning before cremation.

** Price includes everything in the direct cremation package.*



TEXTUREWALL™ PANEL WALL SYSTEM

Add a classic stucco appearance with lasting durability and enhanced efficiency.

The classic beauty of stucco. The enhanced performance of a Butler® building system. You can add this attractive combination of benefits with the TextureWall™ panel wall system. The textured look of this system makes it particularly ideal in instances where local building ordinances require a masonry or stucco exterior.

Choose the TextureWall system to add the beauty of stucco in applications such as retail centers, churches, recreational and community facilities, and more.

CREATE CLASSIC BEAUTY

The exterior face of the TextureWall system features the Texture-Cote™ finish system—a hard aggregate-fiber-reinforced polymer finish that creates its characteristic stucco appearance. The metal interior face is finished in an attractive, virtually flat finish with a polyester white color that is USDA approved. This can act as a finished interior wall or can be used for the application of other wall materials.



Aspen White II



Adobe II



White II



Gray II

Note: Colors shown may vary from actual samples due to variations in the printing process. Colors and color availability subject to change without notice.



ASSURE LASTING DURABILITY

The TextureWall system's durable surface resists the effects of impact, abrasion, and harsh weather. And unlike field-applied finishes that are vulnerable to damp or cold weather during installation, TextureWall panels can be erected in virtually any weather condition.

core insulation and thermal break joint design deliver excellent energy efficiency, with an R-value from 16 to 32 depending on panel thickness. The factory-applied joint sealant provides a complete wall system weather barrier. Panels are offered in 2- to 4-inch thicknesses.

CUSTOMIZE THE LOOK

The rich textured surface of the Texture-Cote finish system is available in four attractive color options. Each is designed to complement other building materials, including Butler wall and roof systems. And with its 42-inch panel width, the TextureWall system creates a stunning monolithic stucco appearance.

FAST INSTALLATION

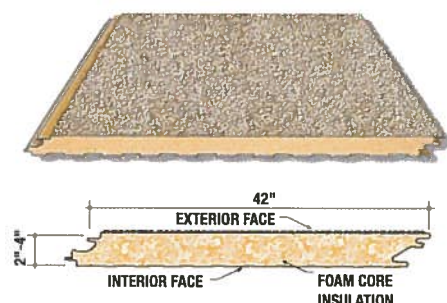
Installation of the Texture-Cote system can be performed from the exterior of the building, which saves time and money.

COMPARE OUR WARRANTY

While many field-applied systems offer a prorated 5-year warranty on the coating material only, Butler stands behind the Texture-Cote finish system with a full 10-year warranty on material and application.

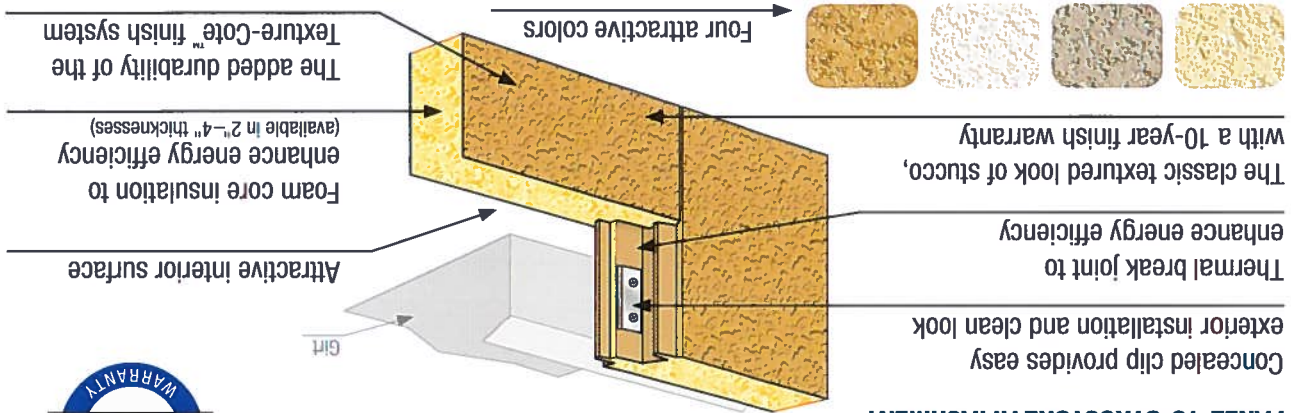
BUILT-IN ENERGY EFFICIENCY

The TextureWall system's factory-installed foam



TEXTUREWALL™ PANEL WALL SYSTEM

PANEL-TO-STRUCTURE ATTACHMENT



KEY BENEFITS

- ⊗ The classic textured look of stucco satisfies many local building codes requiring masonry or stucco exteriors
- ⊗ 10-year finish warranty
- ⊗ Can be erected in virtually all weather conditions
- ⊗ Foam core insulation and thermal break joint enhance energy efficiency (Up to R-32)
- ⊗ Attractive interior metal panel provides finished look without the need for additional materials
- ⊗ The added durability of the Texture-Cote™ finish system
- ⊗ Four attractive colors
- ⊗ Wide 42" panels create a monolithic appearance



- BUTLER OFFERS YOU MORE**
- Butler Builders® provide complete construction services with single-source responsibility
 - Reputable professionals with extensive knowledge of local building codes
 - Maximize your building's performance with a complete Butler® system solution
 - Innovative structural, wall, and roof systems
 - Precision engineered for seamless integration



A BlueScope Steel Company
BUILDING IN A NEW LIGHT™

Butler Manufacturing
Kansas City, MO
816-968-3000

Butler Buildings Canada
Burlington, ON, Canada
905-332-7786

www.butlermfg.com



