

# EARTHMOVER CREDIT UNION

**INDEX TO ARCHITECTURAL DRAWINGS:**

- PROPOSED SITE PLAN AND SITE DETAILS
- PROPOSED SITE PHOTOMETRIC PLAN
- PROPOSED FLOOR PLAN
- PROPOSED EXTERIOR ELEVATIONS (EAST AND SOUTH)
- PROPOSED EXTERIOR ELEVATIONS (NORTH AND WEST)
- EXTERIOR RENDERING (VIEW FROM SOUTHEAST)
- EXTERIOR RENDERING (VIEW FROM NORTHWEST)
- EXTERIOR RENDERING (VIEW FROM SOUTH)



VIEW FROM NORTHEAST CORNER OF SITE

## Earthmover Credit Union - Romeoville, IL

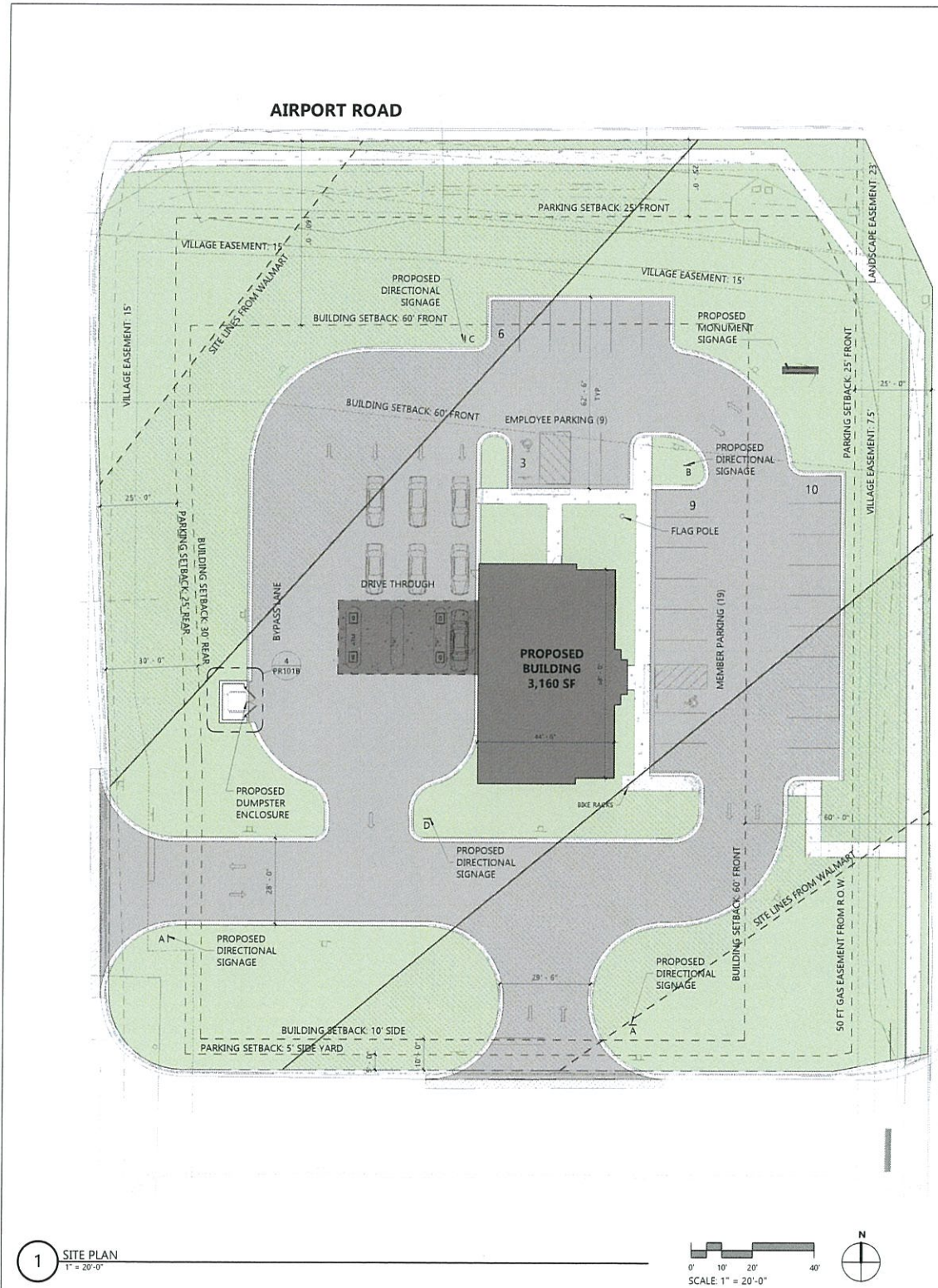
EXTERIOR RENDERING



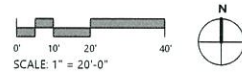
24053

08/05/2024

© 2024 The Redmond Company



1 SITE PLAN  
1" = 20'-0"



**SITE INFORMATION**

**CURRENT ZONING**  
B-3 HIGHWAY REGIONAL SHOPPING

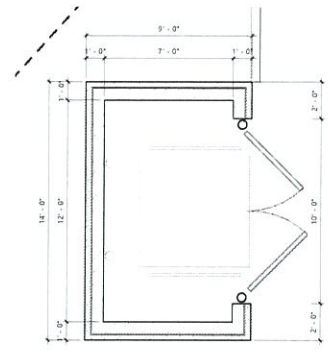
**BUILDING SETBACKS (MINIMUMS)**  
FRONT: 60'  
SIDE: 10'  
REAR: 30'

**LANDSCAPE SETBACKS (MINIMUMS)**  
FRONT / REAR: 25'  
SIDE: 5'

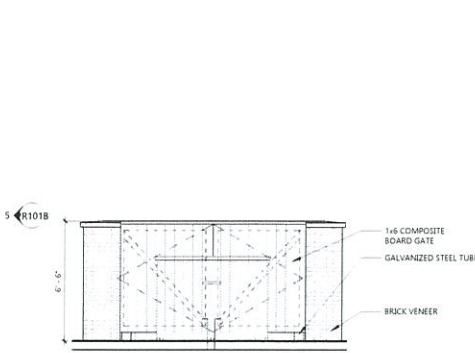
**BUILDING REQUIREMENTS**  
BUILDING HEIGHT (MAX): 40' (PER CITY OF ROMEOVILLE)  
24' (PER WALMART CROSSING COVENANTS)

**PARKING REQUIREMENTS**  
MIN. 1 STALL PER 200 SF REQUIRED (PER CITY OF ROMEOVILLE)  
5 STALLS PER 1000 SF REQUIRED (PER WALMART CROSSING COVENANTS)  
16 STALLS REQUIRED PER CITY OF ROMEOVILLE  
16 REQUIRED PER WALMART CROSSING DEVELOPMENT

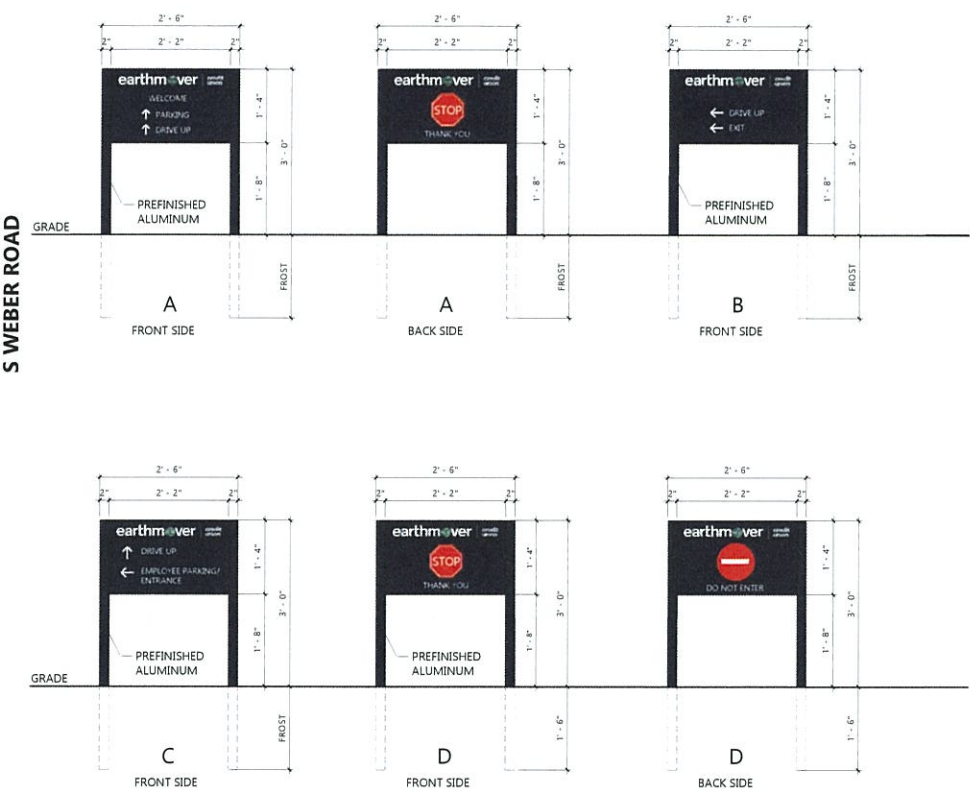
28 STALLS PROVIDED (INCLUDED 2 ACCESSIBLE STALLS)



4 TRASH ENCLOSURE - PLAN  
1/4" = 1'-0"



5 TRASH ENCLOSURE ELEVATION  
1/4" = 1'-0"



2 DIRECTIONAL SIGNAGE  
3/4" = 1'-0"



3 MONUMENT SIGN ELEVATION  
1/4" = 1'-0"

**Earthmover Credit Union - Romeoville, IL**

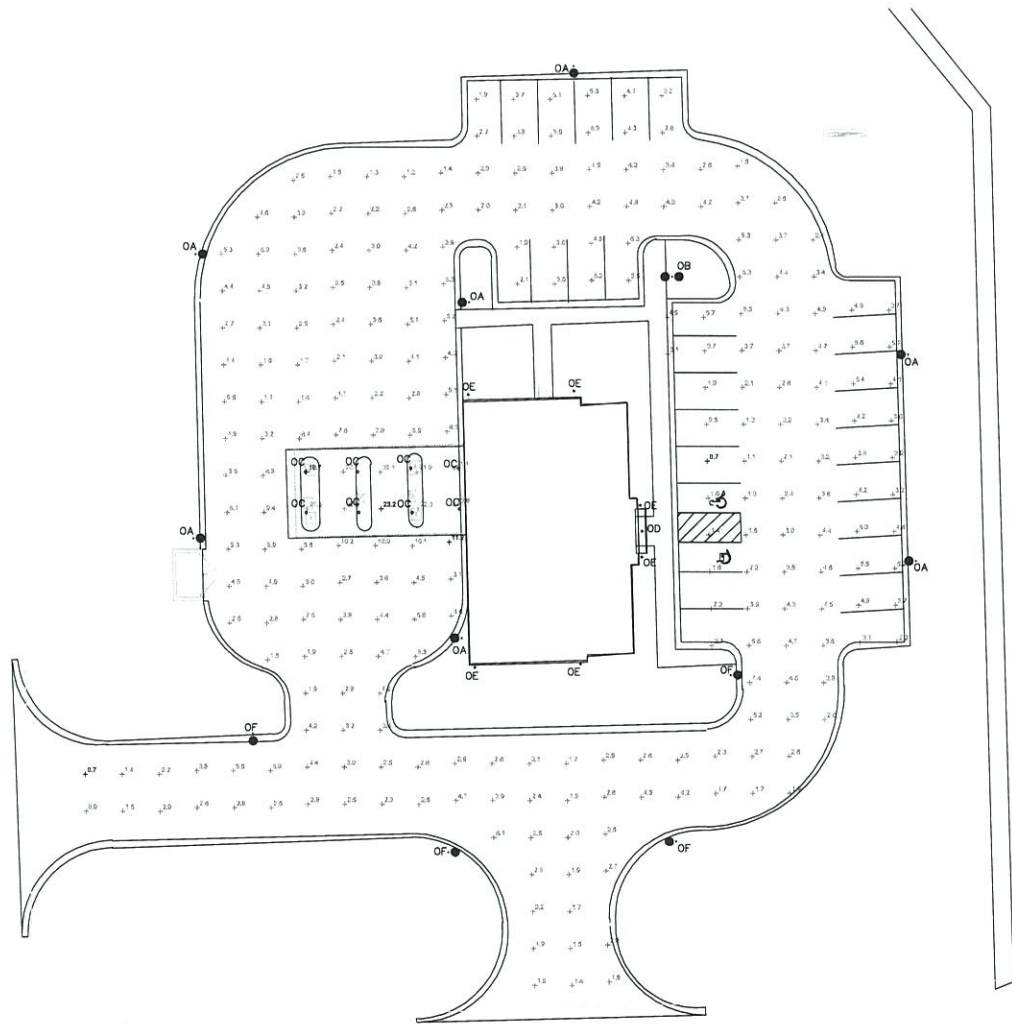
Proposed Site Plan



24053 08/05/2024

Symbol	Label	Image	QTY	Manufacturer	Catalog	Description	Number Lamps	Lamp Output	LLF	Input Power
●	OA		7	Sternberg Lighting	1527LED-24L40T4-MDL14-FG	TYPE IV LUMINAIRE MOUNTED ON A 20' POLE.	1	10662	0.9	87.9
●	OB		1	Sternberg Lighting	1527LED-24L40T4-MDL14-FG	TWIN TYPE IV LUMINAIRE MOUNTED ON A 20' POLE.	1	10662	0.9	175.8
○	OC		8	PRESCOLITE LIGHTING	MOLLED4L3608-MDL4-FG	8" RECESSED CANOPY LIGHT	1	4335	0.9	35.5
○	OD		1	LITON LIGHTING	CHREHLTUE-DUNCR68HL248W-T35	6" SHALLOW RECESSED CANOPY LIGHT	1	1768	0.9	25.95
○	OE		8	LITON LIGHTING	WQ23608-L15-BDV-BUVUE-DUN	6" ROUND UP/DOWN WALL MOUNT	1	2872	0.9	28.41
●	OF		4	Sternberg Lighting	1527LED-24L40T3-MDL14-FG	TYPE III LUMINAIRE MOUNTED ON A 20' POLE.	1	10668	0.9	87.9

Description	Symbol	Avg	Max	Min	Max/Min	Avg/Min
PARKING LOT	+	3.5 f.c.	11.2 f.c.	0.7 f.c.	10.5 f.c.	9.0 f.c.
CANOPY	+	21.7 f.c.	23.2 f.c.	18.7 f.c.	1.5 f.c.	1.1 f.c.



SITE PHOTOMETRIC PLAN  
1" = 30'-0"



REMARKS:

PROJECT:  
EARTH MOVER CREDIT UNION

PROJECT LOCATION:  
ROMEOVILLE, IL

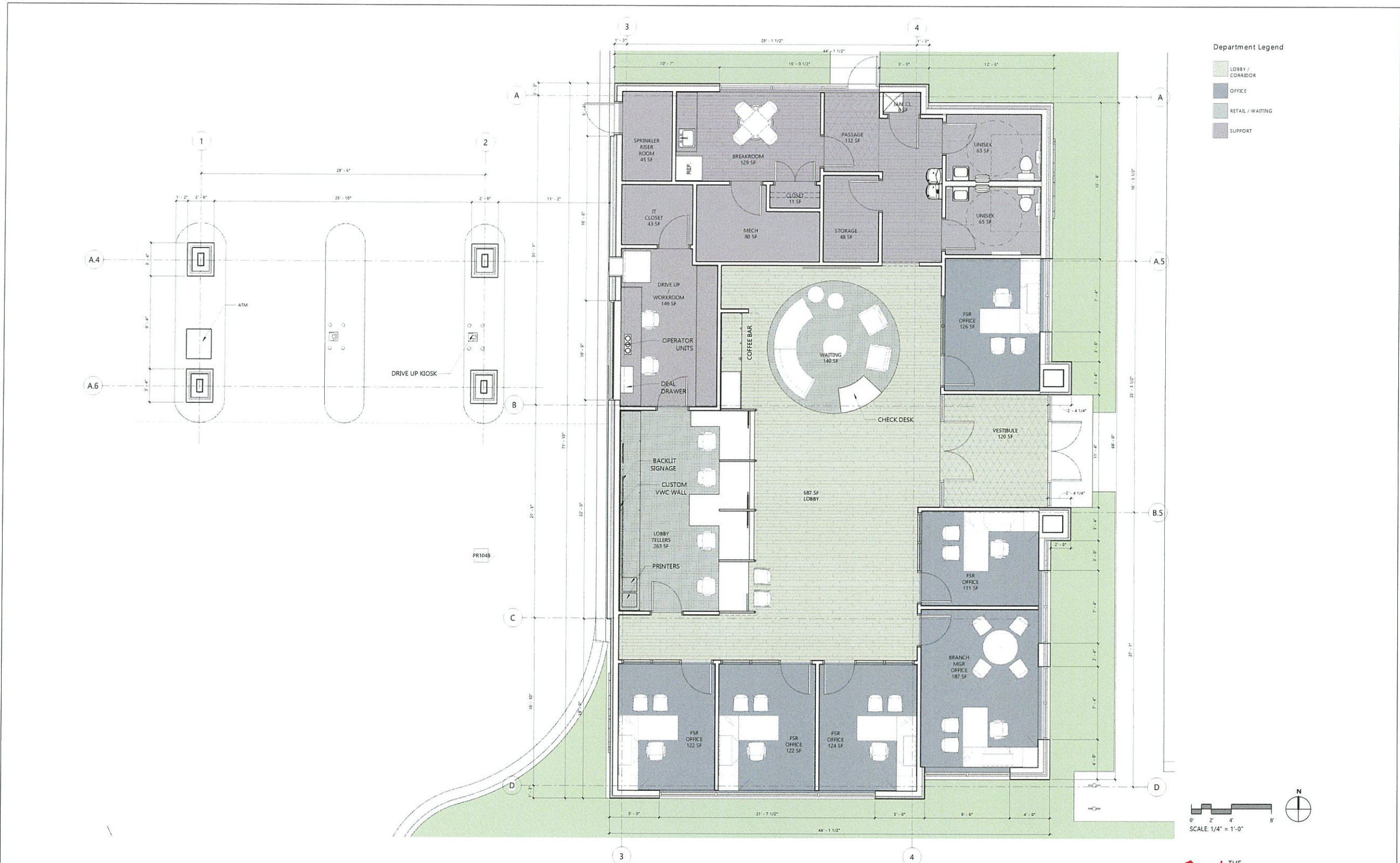


DATE:  
07/31/2024

DRAWN BY:  
J. PRUSINSKI

PROJECT NUMBER:  
00752

SITE PHOTOMETRIC DRAWING  
SCALE: NTS  
ES100



**Earthmover Credit Union - Romeoville, IL**

Proposed Floor Plan

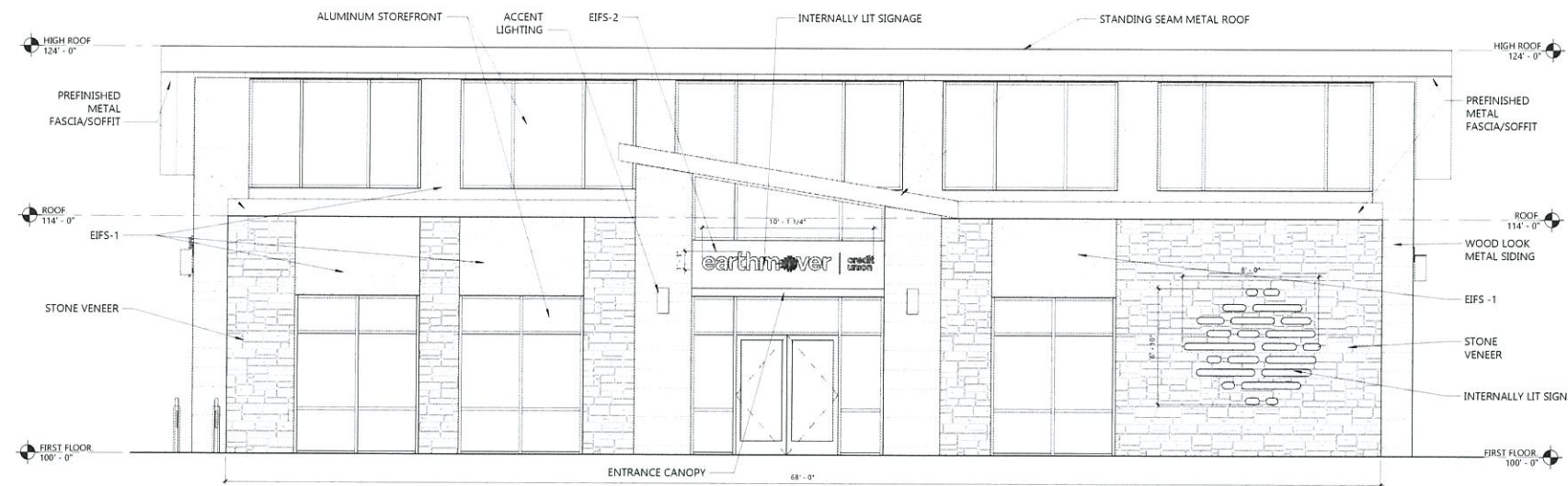


24053

08/05/2024

© 2024 The Redmond Company

MATERIAL SCHEDULE - EXTERIOR					
CODE	DESCRIPTION	MANUFACTURER	COLOR	FINISH	SIZE
AL-1	ALUMINUM STOREFRONT	TUBELITE	CLASS 1 ANODIZED FINISH		
BR-1	4" FACE BRICK VENEER	INTERSTATE BRICK	ASH	MATTE	MODULAR
EIFS-1	EXTERIOR INSULATION FINISH SYSTEM	DRYVIT	104 DOVER SKY		LYMESTONE
EIFS-2	EXTERIOR INSULATION FINISH SYSTEM	DRYVIT	162 INK		
MF-1/MF-2	METAL FASCIA/SOFFIT	PAC-CAD	SLATE GRAY AT HIGH ROOFS AND SANDSTONE AT LOW ROOFS		
SS-1	STANDING SEAM METAL ROOF	PAC-CAD	SLATE GRAY		
ST-1	STONE VENEER	HALQUIST STONE	BROOKFIELD GRAY LEDGESTONE		



EAST ELEVATION: MATERIAL	
MATERIAL	AREA
WOOD LOOK METAL	202 SF
STONE	392 SF
EIFS	239 SF
STOREFRONT	712 SF

**EAST ELEVATION: SIGNAGE**

SIGN AREA:  
THE SIGN AREA SHALL NOT EXCEED ONE AND ONE-HALF SF PER LINEAL FT OF WALL TO WHICH THE SIGN IS ATTACHED (SECTION 159.127 H 5).

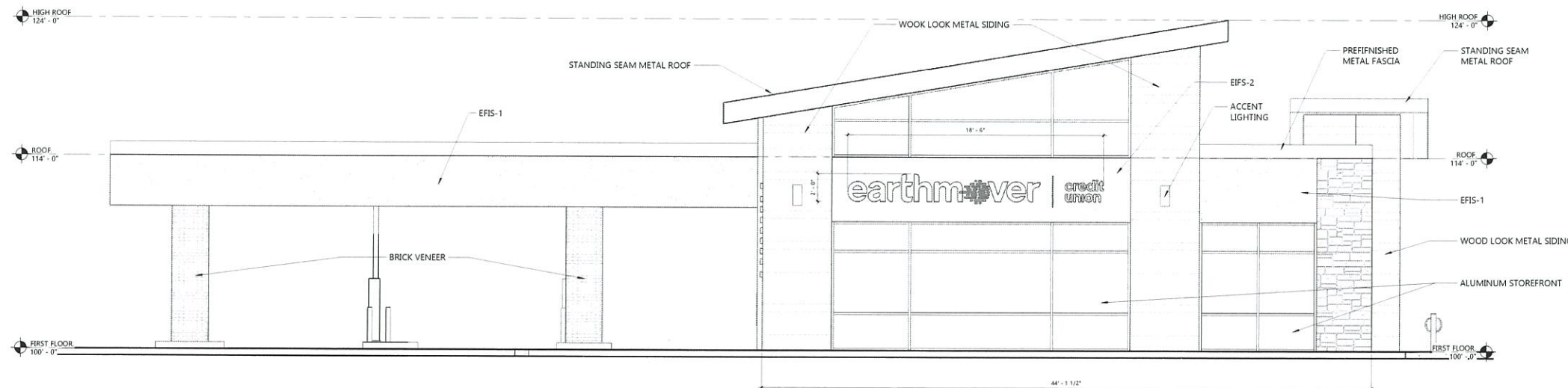
EAST ELEVATION = 68 LINEAL FT  
ALLOWABLE SIGNAGE = 102 SF  
SIGNAGE PROPOSED = 42 SF

FOR INDIVIDUAL TENANT SPACES UNDER 30,000 SF THE SIGNAGE FACE SHALL NOT EXCEED 3 FT IN HEIGHT (SECTION 159.127 H 5A)

ACTUAL HEIGHT = 6'-10"

\* A VARIANCE WILL BE REQUIRED FOR THE COMBET LOGO SIGN

1 EAST ELEVATION  
1/4" = 1'-0"



SOUTH ELEVATION: MATERIAL	
MATERIAL	AREA
WOOD LOOK METAL	240 SF
BRICK	52 SF
STONE	56 SF
EIFS	312 SF
STOREFRONT	400 SF

**SOUTH ELEVATION: SIGNAGE**

SIGN AREA:  
THE SIGN AREA SHALL NOT EXCEED ONE AND ONE-HALF SF PER LINEAL FT OF WALL TO WHICH THE SIGN IS ATTACHED (SECTION 159.127 H 5).

WEST ELEVATION = 44 LINEAL FT  
ALLOWABLE SIGNAGE = 66 SF  
SIGNAGE PROPOSED = 37 SF

FOR INDIVIDUAL TENANT SPACES UNDER 30,000 SF THE SIGNAGE FACE SHALL NOT EXCEED 3 FT IN HEIGHT (SECTION 159.127 H 5A)

ACTUAL HEIGHT = 2'-0"

2 SOUTH ELEVATION  
1/4" = 1'-0"

# Earthmover Credit Union - Romeoville, IL

Exterior Elevations

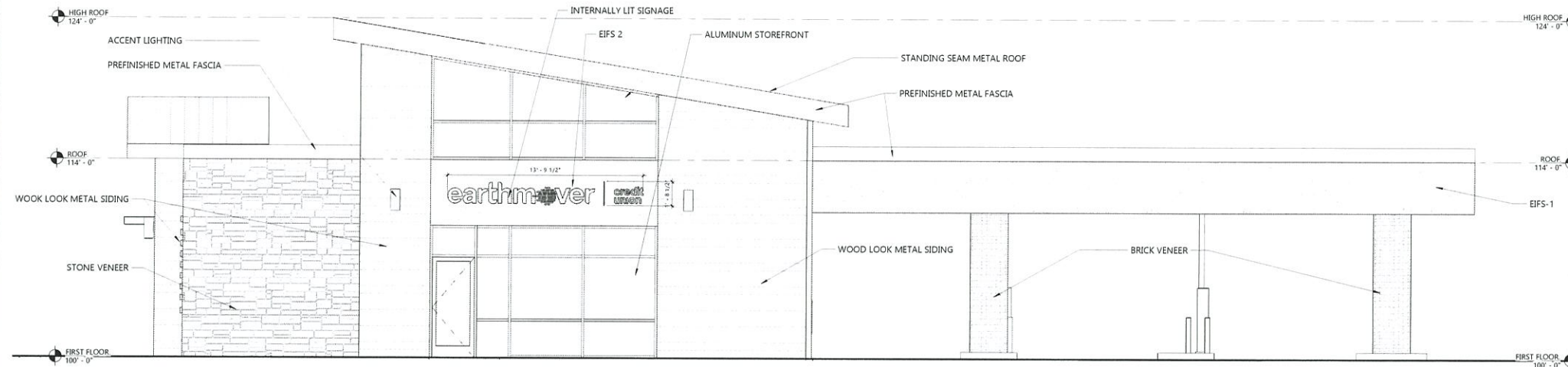


24053

08/05/2024

© 2024 The Redmond Company

MATERIAL SCHEDULE - EXTERIOR					
CODE	DESCRIPTION	MANUFACTURER	COLOR	FINISH	SIZE
AL-1	ALUMINUM STOREFRONT	TUBELITE	CLASS 1 ANODIZED FINISH		
BR-1	4" FACE BRICK VENEER	INTERSTATE BRICK	ASH	MATTE	MODULAR
EFS-1	EXTERIOR INSULATION FINISH SYSTEM	DRYVIT	104 DOVER SKY		LYMESTONE
EFS-2	EXTERIOR INSULATION FINISH SYSTEM	DRYVIT	162 INK		LYMESTONE
MF-1/MF-2	METAL FASCIA/SOFFIT	PAC-CAD	SLATE GRAY AT HIGH ROOFS AND SANDSTONE AT LOW ROOFS		
SS-1	STANDING SEAM METAL ROOF	PAC-CAD	SLATE GRAY		
ST-1	STONE VENEER	HALQUIST STONE	BROOKFIELD GRAY LEDGESTONE		



1 NORTH ELEVATION  
1/4" = 1'-0"

NORTH ELEVATION: MATERIAL	
MATERIAL	AREA
WOOD LOOK METAL	324 SF
BRICK	60 SF
STONE	175 SF
EIFS	246 SF
STOREFRONT	245 SF

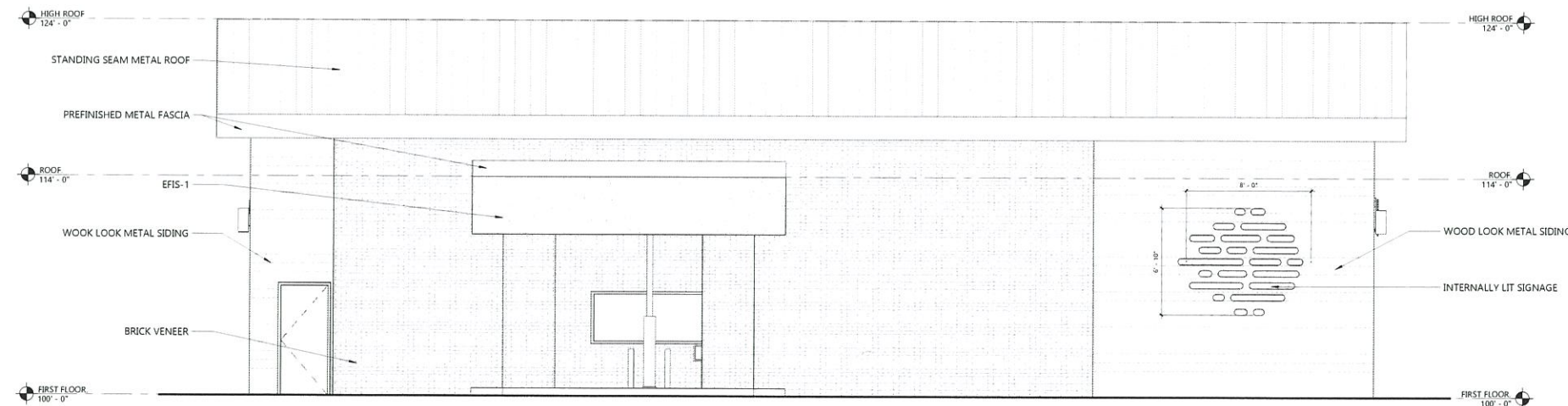
**NORTH ELEVATION: SIGNAGE**

SIGN AREA:  
THE SIGN AREA SHALL NOT EXCEED ONE AND ONE-HALF SF PER LINEAL FT OF WALL TO WHICH THE SIGN IS ATTACHED (SECTION 159.127 H 5).

NORTH ELEVATION = 44 LINEAL FT  
ALLOWABLE SIGNAGE = 66 SF  
SIGNAGE PROPOSED = 24 SF

FOR INDIVIDUAL TENANT SPACES UNDER 30,000 SF THE SIGNAGE FACE SHALL NOT EXCEED 3 FT IN HEIGHT (SECTION 159.127 H 5a).

ACTUAL HEIGHT = 1'-8 1/2"



2 WEST ELEVATION  
1/4" = 1'-0"

WEST ELEVATION: MATERIAL	
MATERIAL	AREA
WOOD LOOK METAL	358 SF
BRICK	860 SF
STOREFRONT	34 SF
EIFS	73 SF

**WEST ELEVATION: SIGNAGE**

SIGN AREA:  
THE SIGN AREA SHALL NOT EXCEED ONE AND ONE-HALF SF PER LINEAL FT OF WALL TO WHICH THE SIGN IS ATTACHED (SECTION 159.127 H 5).

WEST ELEVATION = 72 LINEAL FT  
ALLOWABLE SIGNAGE = 108 SF  
SIGNAGE PROPOSED = 50 SF

FOR INDIVIDUAL TENANT SPACES UNDER 30,000 SF THE SIGNAGE FACE SHALL NOT EXCEED 3 FT IN HEIGHT (SECTION 159.127 H 5a).

ACTUAL HEIGHT = 6'-10"  
\* A VARIANCE WILL BE REQUIRED FOR THE COMET LOGO SIGN

# Earthmover Credit Union - Romeoville, IL

Exterior Elevations



24053

08/05/2024

© 2024 The Redmond Company



VIEW FROM SOUTHEAST CORNER OF SITE

**Earthmover Credit Union - Romeoville, IL**

EXTERIOR RENDERING



24053

08/05/2024

© 2024 The Redmond Company



VIEW FROM NORTHWEST CORNER OF SITE

## Earthmover Credit Union - Romeoville, IL

EXTERIOR RENDERING



24053

08/05/2024

© 2024 The Redmond Company





VIEW FROM SOUTH ENTRANCE

## Earthmover Credit Union - Romeoville, IL

EXTERIOR RENDERING



24053

08/05/2024

© 2024 The Redmond Company