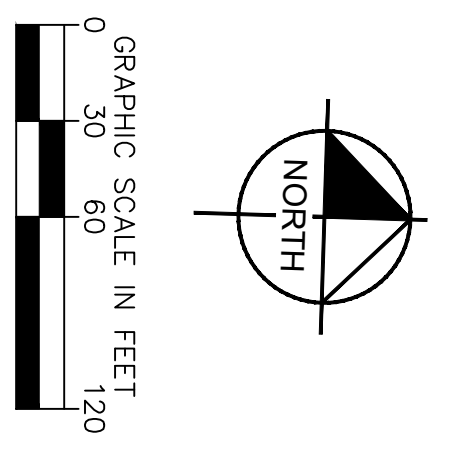
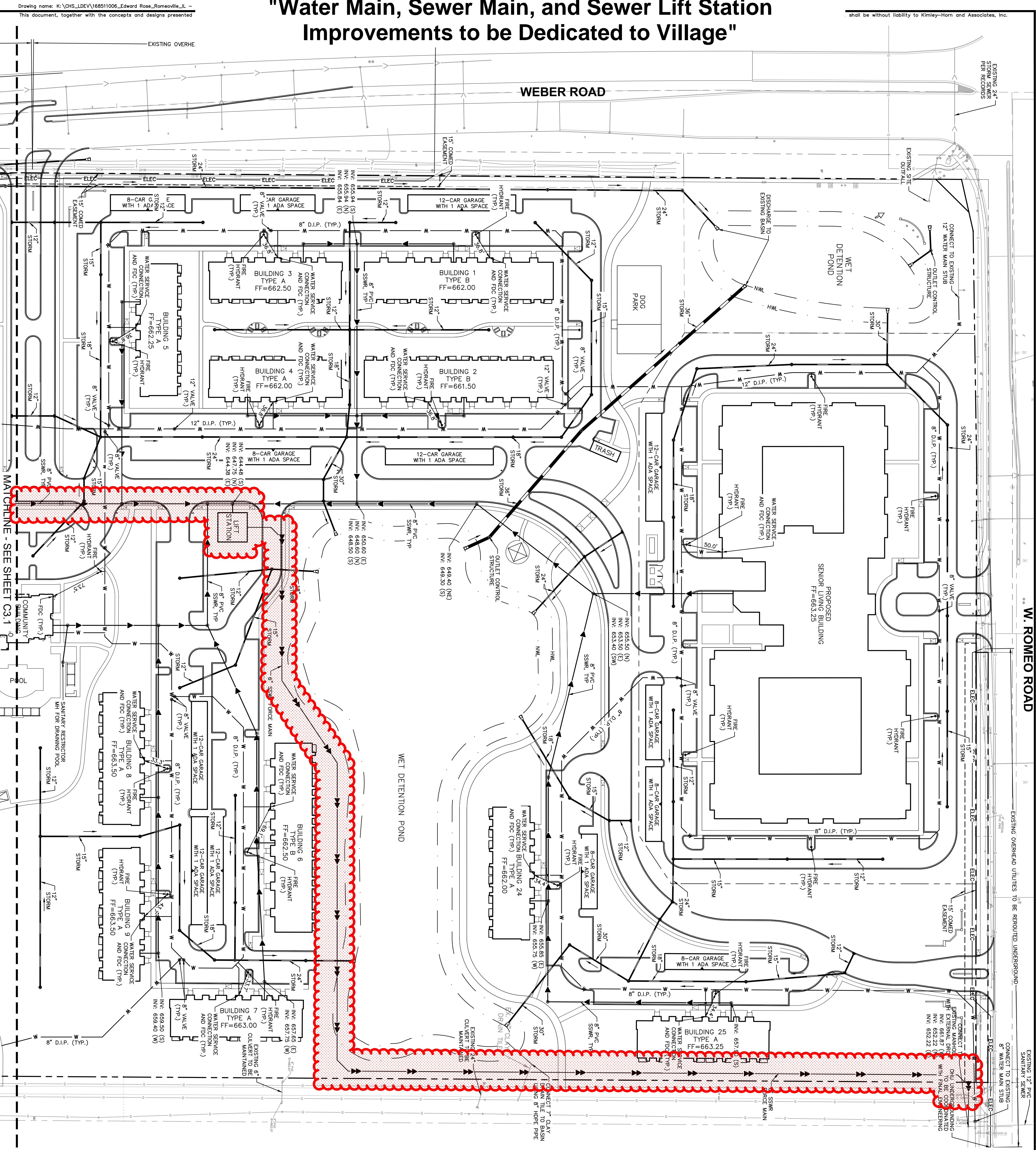


Exhibit C-7a

"Water Main, Sewer Main, and Sewer Lift Station Improvements to be Dedicated to Village"

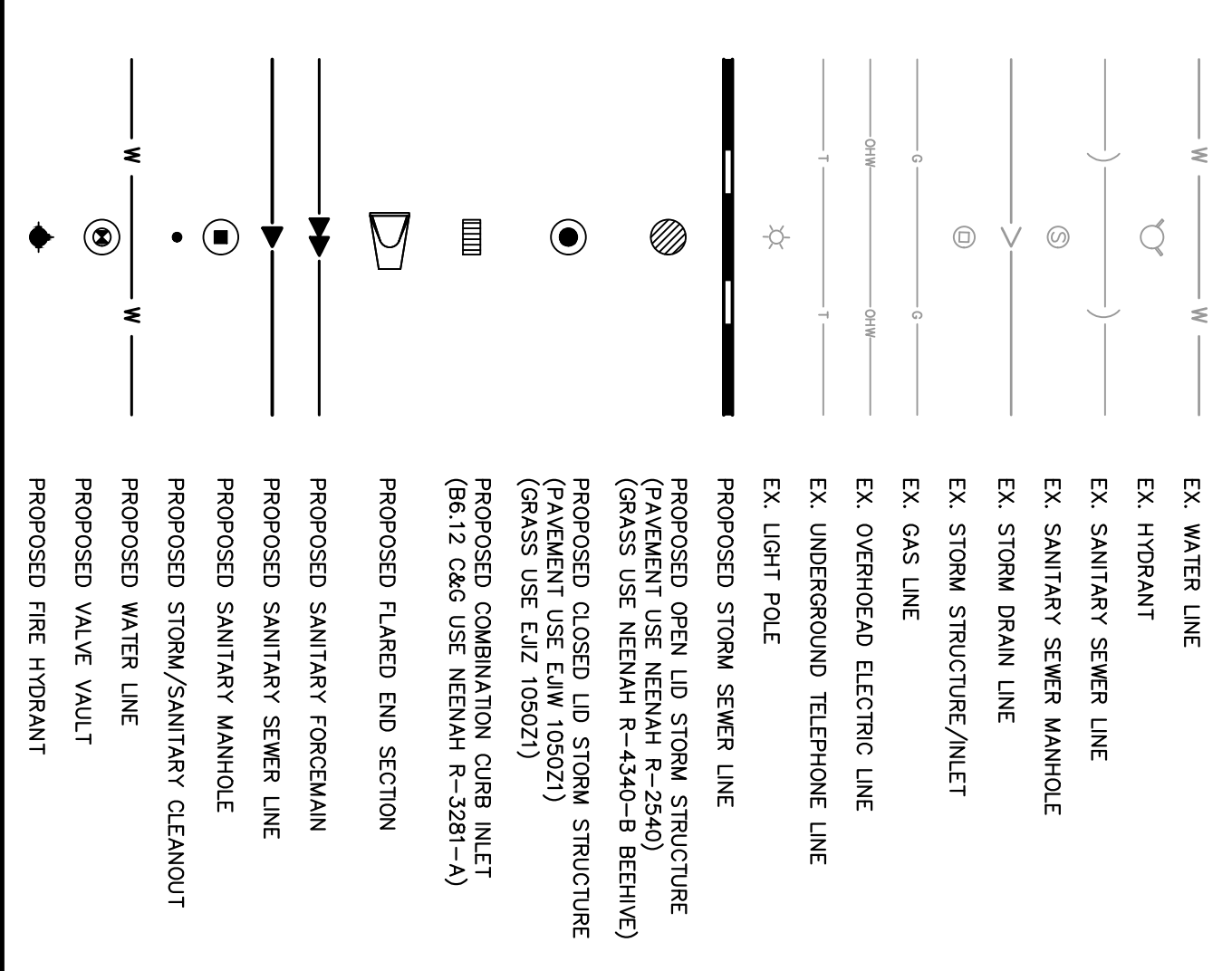
shall be without liability to Kimley-Horn and Associates, Inc.



UTILITY NOTES

- ALL WATER LINES ≥ 3" SHALL BE DUCTILE IRON PIPE CLASS 52.
- ALL SANITARY SEWER LINES SHALL BE PVC MEETING ASTM D-3034 SDR 26. ALL SANITARY SEWER LINES SHALL BE 42" MINIMUM COVER. PROVIDE 42" MINIMUM COVER.
- CONTRACTOR SHALL COORDINATE ANY DISRUPTIONS TO EXISTING UTILITY SERVICES WITH ADJACENT PROPERTY OWNERS.
- ALL ELECTRIC AND TELEPHONE EXTERNSIONS INCLUDING SERVICE LINES SHALL BE CONSTRUCTED TO THE APPROPRIATE UTILITY COMPANY'S SPECIFICATIONS. ALL UTILITY DISCONNECTIONS SHALL BE COORDINATED WITH THE DESIGNATED UTILITY COMPANIES.
- CONSTRUCTION SHALL NOT START ON ANY PUBLIC UTILITY SYSTEM UNTIL WRITTEN APPROVAL HAS BEEN RECEIVED BY THE ENGINEER FROM THE NOTIFIED UTILITY OPERATIONS AUTHORITY AND CONTRACTOR HAS BEEN NOTIFIED BY THE ENGINEER.
- CONTRACTOR TO CALL "CALL" (1-800-892-0123) TO COORDINATE FIELD SURVEY AND FIELD VERIFICATION OF ALL UTILITIES PRIOR TO CONSTRUCTION. CONTRACTOR SHALL VERIFY ALL POINTS OF CONNECTION AND DEVELOPER OF ANY CONFLICT OR REQUIRED DEVIATIONS FROM THE PLAN. NOTIFICATION SHALL BE MADE A MINIMUM OF 72 HOURS PRIOR TO CONSTRUCTION. THE ENGINEER AND HIS CLIENTS SHALL BE HELD HARMLESS IN CONNECTION WITH ANY AND ALL CHANGES TO THE DESIGN PLANS.
- CONTRACTOR SHALL COMPLETELY WITH THE LATEST STANDARDS OF OSHA DIRECTIVES OR ANY OTHER AGENCY HAVING JURISDICTION FOR EXCAVATION AND TRENCHING PROCEDURES. THE CONTRACTOR SHALL USE THE LATEST STANDARDS OF OSHA DIRECTIVES OR ANY OTHER AGENCY HAVING JURISDICTION FOR EXCAVATION AND TRENCHING. CONTRACTOR IS RESPONSIBLE FOR COMPLYING WITH PERFORMANCE CRITERIA AS REQUIRED BY OSHA.
- CONTRACTOR TO AVOID DISRUPTION OF ANY ADJACENT TENANT'S TRAFFIC OPERATIONS DURING INSTALLATION OF UTILITIES.
- ALL DIMENSIONS ARE TO CENTERLINE OF PIPE OR CENTER OF MANHOLE UNLESS NOTED OTHERWISE.
- SEE ARCHITECTURAL AND MEP PLANS FOR EXACT UTILITY CONNECTION LOCATIONS AT BUILDING.
- STORMWATER FACILITIES MUST BE FUNCTIONAL BEFORE BUILDING CONSTRUCTION BEGINS IF REQUIRED BY AUTHORITY HAVING JURISDICTION.

UTILITY LEGEND



EDWARD ROSE & SONS - MIXED USE DEVELOPMENT SE CORNER OF WEBER ROAD AND ROMEO ROAD, ROMEOVILLE IL		SCALE: AS NOTED DESIGNED BY: TRE DRAWN BY: TRW CHECKED BY: WAW	Kimley»Horn <small>© 2024 KIMLEY-HORN AND ASSOCIATES, INC. 4201 WINFIELD ROAD, SUITE 600, WARRENVILLE, IL 60555 PHONE: 630-437-8777 WWW.KIMLEY-HORN.COM</small>	REVISED PER VILLAGE COMMENTS 04/30/24 TRW REVISED PER VILLAGE COMMENTS 03/01/24 TRW REVISED PER VILLAGE COMMENTS 05/12/23 TRW
		No. REVISIONS DATE BY		No. REVISIONS DATE BY
		No. REVISIONS DATE BY		No. REVISIONS DATE BY
		No. REVISIONS DATE BY		No. REVISIONS DATE BY

C3.0
SHEET NUMBER

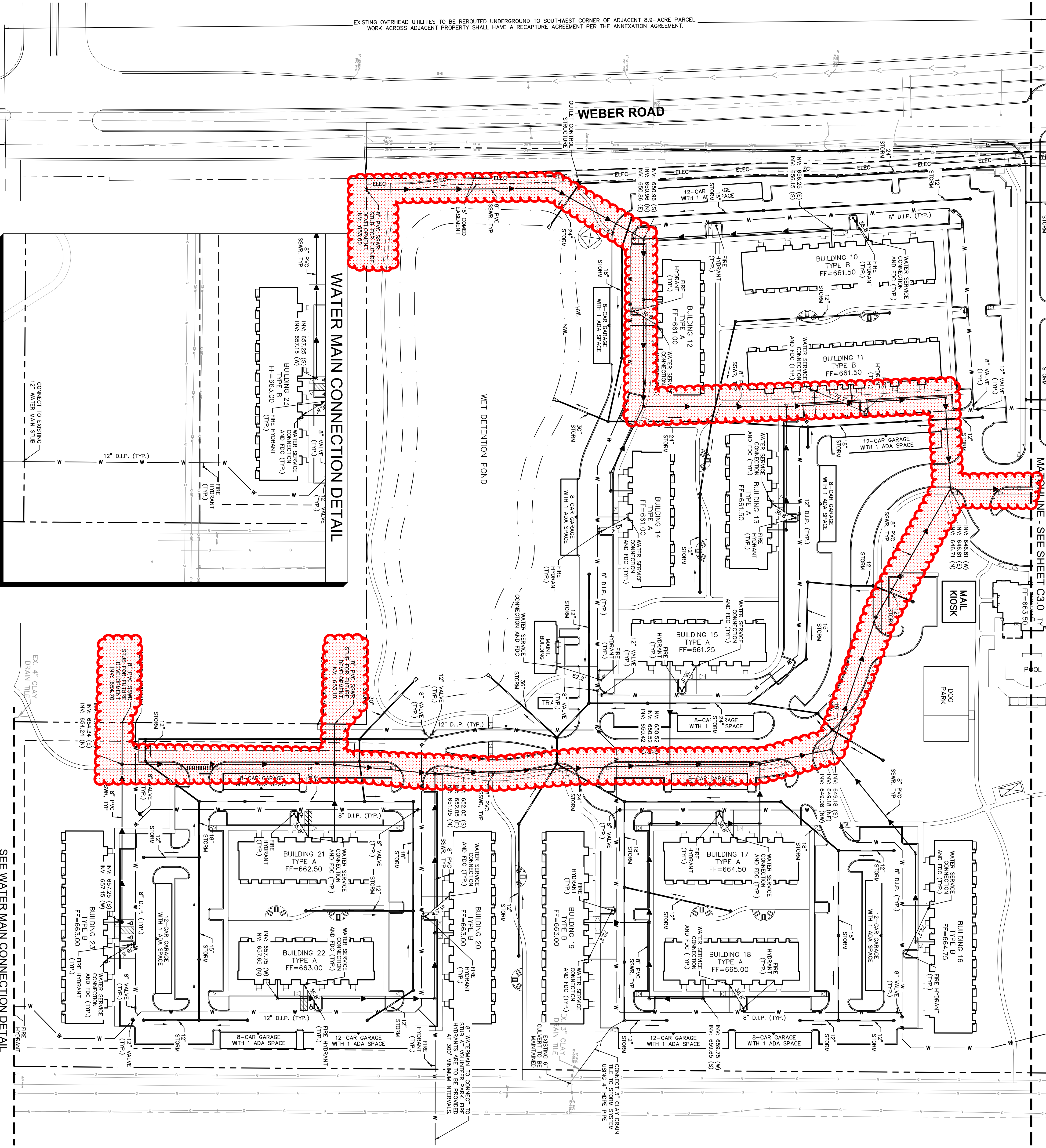
EDWARD ROSE & SONS - MIXED USE DEVELOPMENT
 SE CORNER OF WEBER ROAD AND ROMEO ROAD, ROMEOVILLE IL

UTILITY PLAN

ORIGINAL ISSUE: 02/10/2023
 KHA PROJECT NO. 188511006

This document, together with the concepts and designs presented herein, as an instrument of service, is intended only for the specific purpose and client for which it was prepared. Reuse of and improper reliance on this document without written authorization and adaptation by Kimley-Horn and Associates, Inc. shall be without liability to Kimley-Horn and Associates, Inc.

EXISTING OVERHEAD UTILITIES TO BE REROUTED UNDERGROUND TO SOUTHWEST CORNER OF ADJACENT 8.9-ACRE PARCEL.
 WORK ACROSS ADJACENT PROPERTY SHALL HAVE A RECAPTURE AGREEMENT PER THE ANNEXATION AGREEMENT.

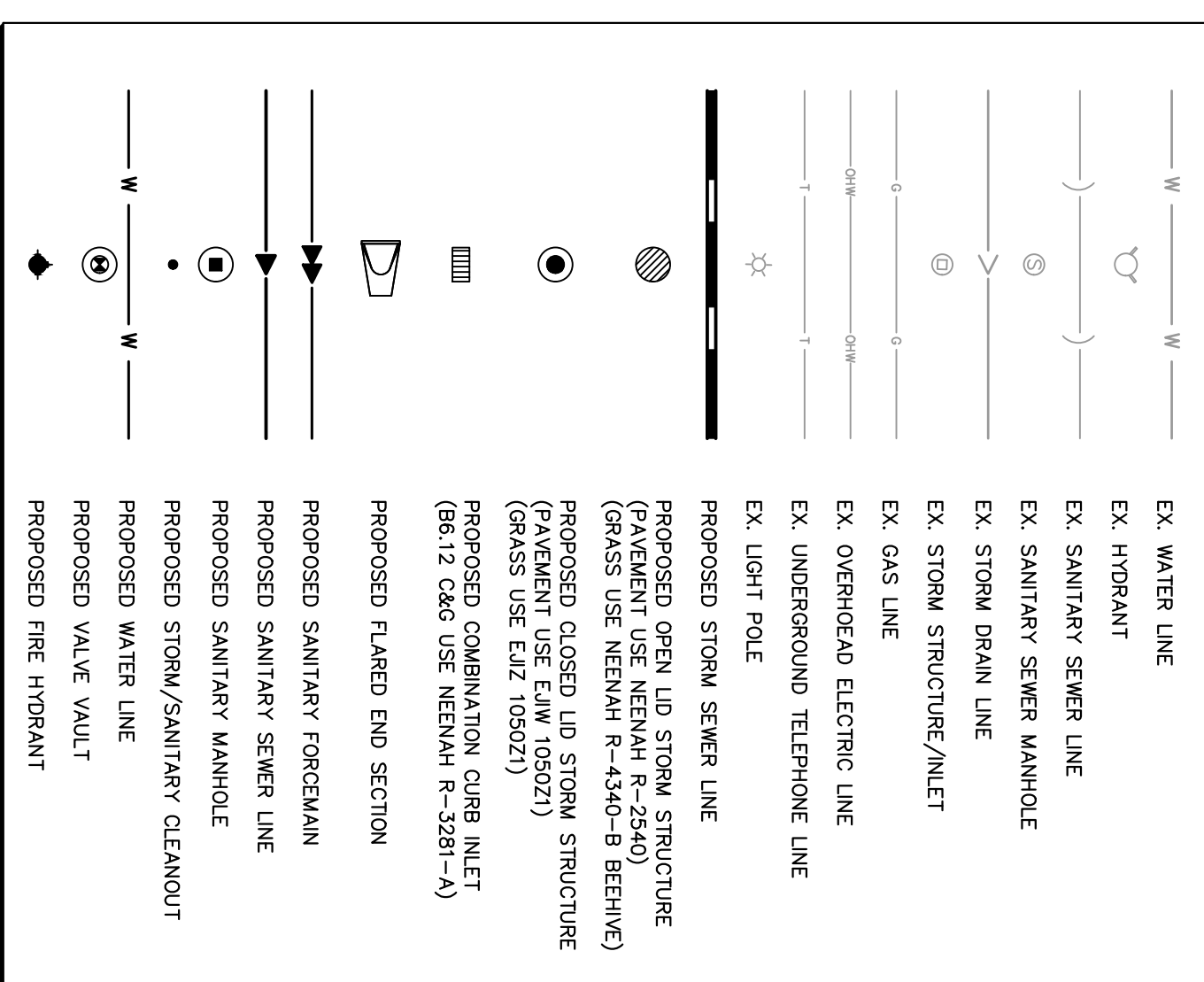


Call Before You Dig
1-800-892-0123

UTILITY NOTES

1. ALL WATER LINES ≥ 3" SHALL BE DUCTILE IRON PIPE CLASS 52.
2. ALL SANITARY SEWER LINES SHALL BE PVC MEETING ASTM D-3034 SDR 26. ALL SANITARY SEWER LINES SHALL BE 4" MINIMUM COVER UNLESS WATER MAIN CASING IS UTILIZED. PROVIDE 42" MINIMUM COVER.
3. CONTRACTOR SHALL COORDINATE ANY DISRUPTIONS TO EXISTING UTILITY SERVICES WITH ADJACENT PROPERTY OWNERS.
4. ALL ELECTRIC AND TELEPHONE EXTENSIONS INCLUDING SERVICE LINES SHALL BE CONSTRUCTED TO THE APPROPRIATE UTILITY COMPANY'S SPECIFICATIONS. ALL UTILITY DISCONNECTIONS SHALL BE COORDINATED WITH THE DESIGNATED UTILITY COMPANIES.
5. CONSTRUCTION SHALL NOT START ON ANY PUBLIC UTILITY SYSTEM UNTIL WRITTEN APPROVAL HAS BEEN RECEIVED BY THE ENGINEER FROM THE NOTIFIED WRITTEN APPROVING AUTHORITY AND CONTRACTOR HAS BEEN NOTIFIED BY THE ENGINEER.
6. CONTRACTOR TO CALL "CALL" (1-800-892-0123) TO COORDINATE FIELD SURVEYS AND CONSTRUCTION NOTIFICATION ENGINEER OF ANY DISCREPANCIES IMMEDIATELY.
7. PRIOR TO THE CONSTRUCTION OF OR CONNECTION TO ANY STORM DRAIN, SANITARY SEWER, WATER MAIN OR ANY OTHER UTILITIES, THE CONTRACTOR SHALL EXCAVATE, VERIFY AND CALCULATE ALL POINTS OF CONNECTION AND IDENTIFY ALL "CONFLICT" OR REQUIRED DEVIATIONS FROM THE PLAN. NOTIFICATION SHALL BE MADE A MINIMUM OF 72 HOURS PRIOR TO CONSTRUCTION. THE ENGINEER AND HIS CLIENTS SHALL BE HELD HARMLESS IN CONNECTION WITH ANY AND ALL CHANGES TO THE DESIGN PLANS.
8. CONTRACTOR SHALL COMPLETELY WITH THE LATEST STANDARDS OF OSHA DIRECTORS OR ANY OTHER AGENCY HAVING JURISDICTION FOR EXCAVATION AND TRENCHING PROCEDURES. THE CONTRACTOR SHALL USE SHIELDING AND PROTECTIVE DEVICES TO PROTECT ALL UTILITIES. THIS IS TO INCLUDE, BUT NOT LIMITED TO ACCESS AND EGRESS FROM ALL EXCAVATION AND TRENCHING, AS REQUIRED BY OSHA.
9. CONTRACTOR TO AVOID DISRUPTION OF ANY ADJACENT TENANT'S TRAFFIC OPERATIONS DURING INSTALLATION OF UTILITIES.
10. ALL DIMENSIONS ARE TO CENTRELINE OF PIPE OR CENTER OF MANHOLE UNLESS NOTED OTHERWISE.
11. SEE ARCHITECTURAL AND MEP PLANS FOR EXACT UTILITY CONNECTION LOCATIONS AT BUILDING.
12. STORMWATER FLOWLINES MUST BE DIRECTIONAL, BEFORE BUILDING CONSTRUCTION BEGINS IF REQUIRED BY AUTHORITY HAVING JURISDICTION.

UTILITY LEGEND



<p>EDWARD ROSE & SONS - MIXED USE DEVELOPMENT SE CORNER OF WEBER ROAD AND ROMEO ROAD, ROMEOVILLE IL</p>	<p>UTILITY PLAN</p>		SCALE: AS NOTED DESIGNED BY: TRE DRAWN BY: TRW CHECKED BY: WAW	<p>Kimley-Horn © 2024 KIMLEY-HORN AND ASSOCIATES, INC. 4201 WINFIELD ROAD, SUITE 600, WARRENVILLE, IL 60555 PHONE: 630-397-8787 WWW.KIMLEY-HORN.COM</p>	REVISED PER VILLAGE COMMENTS 04/30/24 TRW
			REVISED PER VILLAGE COMMENTS 03/01/24 TRW		REVISED PER VILLAGE COMMENTS 05/12/23 TRW
ORIGINAL ISSUE: 02/10/2023 KHA PROJECT NO. 168511006 SHEET NUMBER C3.1	NO. REVISIONS DATE BY	NO. REVISIONS DATE BY	NO. REVISIONS DATE BY	NO. REVISIONS DATE BY	NO. REVISIONS DATE BY